

# Birds Eye View 12 days



Looking skyward, Keoladeo National Park teems with thousands of migratory birds during the winter months, flying in from Central Asia, Siberia or China. Coupled with Kanha National Park for leopard, chital and tiger, all things wild are found on this tour.

## TOUR DETAILS:

- Starts in: Delhi / Ends in: Delhi
- Departs: Tuesdays, September through April
- No local payment required
- Breakfast: 11, Lunch: 8, Dinner: 9
- Hotel Rating: Superior
- Tour Guide: Yes (a naturalist whilst in Keoladeo, Chambal and Kanha NP)

## ONLINE RESOURCES:

- For a detailed GO GUIDE - [click here](#)
- To book this trip - [click here](#)
- To enquire about this trip - [click here](#)

## TOUR MAP:



## QUICK WEB LINKS

[India Prices](#) ::: [Why Us for India?](#) ::: [Best Places to Visit](#) ::: [Best Time to Visit](#) ::: [India Reviews](#) ::: [Hotels in India](#) ::: [India - Useful Info](#) ::: [FAQs on India](#) ::: [India Visas](#) ::: [India Gallery](#)

# Birds Eye View 12 days

## Day 1: Delhi

Once you arrive into Delhi you'll be met and transferred to the airport. The rest of the day is at leisure for you to start to explore Delhi or to relax at the hotel. Overnight - [Delhi](#)

## Day 2: Bharatpur

Delhi – Bharatpur. Morning drive to Bharatpur (approximately 5 hours) and check in to our hotel. In the afternoon, we travel by rickshaw to the Keoladeo National Park.

The Keoladeo National Park is a World Heritage Site. It was artificially created by a planned system of canals, embankments and sluices, as a private wildfowl shooting preserve by the Maharaja of Bharatpur in the 1850s. Now a National Park, Keoladeo attracts thousands of migratory birds during the winter months, which fly in from Central Asia, Siberia or China to escape the severe cold and restricted daylight hours of their homelands. It is one of the finest waterfowl reserves in the world; over 350 species of birds have been spotted here. Overnight - [Bharatpur](#)

## Day 3: Bird watching at Keoladeo NP

Today we spend a full day bird watching at Keoladeo National Park. Overnight - [Bharatpur](#)



## Day 4:

This morning we start our bird watching at Bund Baretha, followed by a visit to the bird sanctuary. Bund Baretha is a large reservoir which is also noted as a good location to find Indian Skimmer and other waterbirds. The surrounding arid countryside is worth checking for sandgrouse, Indian Coursers, Yellow-wattled Lapwing, Eastern Pied, Isabelline and Desert Wheatears along with a number of prinia species to test identification skills. This afternoon we travel back to Bharatpur to the Sanctuary. Overnight - [Bharatpur](#)

## Day 5: Boat Safari on the Chambal

Bharatpur – Chambal. Today we have an early start for our drive to

Chambal (approximately 3 hours). We check into our hotel and later in the afternoon, head off on a boat safari on the Chambal River. Overnight - [Chambal](#)

## Day 6: Boat Safari on the Chambal River

Today we take on a boat safari along the Chambal River. The Chambal River was declared a Gharial Sanctuary during 1978-79 by the M.P. Government, with an aim to provide a fully protected habitat for the conservation and propagation of the highly endangered Crocodylian species and other aquatic animals. The National Chambal Sanctuary is the longest river Sanctuary and holds the best Gharial population in the country. Overnight - [Chambal](#)



## Day 7: Taj Mahal and Agra Fort

Chambal – Agra – Jabalpur. Early morning drive from Chambal to Agra (approximately 2 hours). Check in at your hotel (day room use). Enjoy a sightseeing tour of the city in the afternoon, including Taj Mahal and Agra Fort. Built entirely of white marble, the Taj Mahal has no peers. Continuing, we visit Agra fort, which boasts some of India's finest Mughal buildings behind its fortified walls. Later on transfer to Agra Railway Station for overnight train to Jabalpur – 2nd Class Air Condition Sleeper. Overnight - Sleeper Train

## Day 8: Kanha NP

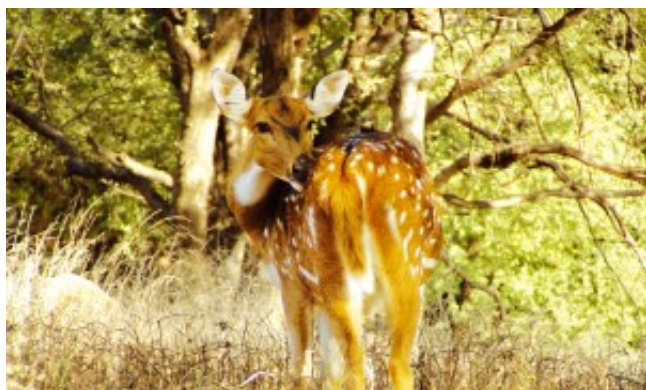
We arrive at Jabalpur early morning and transfer to the Hotel Narmada Jackson for breakfast. Later we drive to Kanha (approximately 4 hours) and check in to our resort. In the afternoon we enjoy a game drive in the National Park, by private jeep. Overnight - [Kanha NP](#)

## Days 9 - 10: Game driving in Kanha

Jabalpur – Kanha – breakfast. Enjoy morning and afternoon game drives in the National Park. Kanha is one of India's largest and most remote national parks, covering 1945 sq km of forest and lightly wooded grasslands. An extensive network of rivers and streams supports it. The setting of Kipling's "Jungle Book", Kanha National

# Birds Eye View 12 days

Park has an excellent variety of wildlife including Leopards, Chital, Sambar, three striped palm squirrel, common langur, jackal, wild pig, chital or spotted Deer, Barasingha or swamp Deer, (The park is the only habitat of the rare hardground Barasingha), Blackbug. Indian Hare, Dhole or Indian wild dog, barking deer, Indian Bison or Gaur, Indian Fox, sloth bear, striped hyena, Jungle Cat, Panther, Mouse Deer, Chausingha or four horned antelope, Nilgai or blue bull, Ratel, Indian Porcupine, wolf, Chinkara, Indian Pangolin, the smooth Indian otter, small Indian Civet. And most famously, the tiger. It's possible to make elephant-back excursions into the park in the early morning and evening to see tigers. Although wildlife can be seen throughout the season, sightings increase during the hotter months of March and April, because the animals move out of the tree cover in search of water. Overnight - [Kanha NP](#)



## Day 11: Fly to Delhi

Kanha – Nagpur – Delhi. After lunch, drive from Kanha to Nagpur for your flight to Delhi. Upon arrival in Delhi, you will be met and transferred to your hotel. Overnight - [Delhi](#)

## Day 12: Delhi

This morning we head to Sultanpur Bird Sanctuary for the last of our bird watching, before heading back to the hotel for our check-out and transfer to the airport.

## WHAT YOU SEE AND WHAT YOU GET:

Below is a list of key highlights and what is included on this tour. Further, where appropriate, we have listed the items that are not included in the tour price.

## Trip Highlights

- Keoladeo National Park - home to over 350 species of migratory birds
- Chambal National Park - home to a whole host of birds including Kingfisher, Owls and Parakeets
- Agra - the beautiful Agra Fort and the magnificent Taj

- Mahal
- Kanha National Park - home to the illusive Bengal tiger
- Sultanpur Bird Sanctuary - beautiful bird sanctuary on a lake

## What's Included

- 11 breakfasts, 8 lunches, 9 dinners
- 10 nights standard hotels and lodges.
- Touring of the Taj Mahal - Agra
- National Park entrance fees
- Airport arrival and departure transfer on day 1 and day 12
- Touring and excursions as per itinerary
- Local Bird Naturalist for Keoladeo, Chambal and Kanha National Parks
- Local English speaking specialist guides at local sights

## What's Not Included

- International flights, visas and tipping - an entirely personal gesture
- Laundry, drinks, items of a personal nature
- Tiger Shows at Kanha National Park, as it is subject to successful Tiger Tracking.

## PRICES AND DATES: from USD \$6,159

Prices shown are 'per person', based on a travelling party of at least 2 adults. The single supplement price needs to be added to the twin/double price if single rooms are required. If travelling solo, an additional '1-person' supplement will apply. Prices are indicative and will vary depending on your chosen hotels, room availability as well as time of travel i.e. during India's peak travel season of 21 Dec - 10 Jan, additional supplements will apply. Equally, if you wish to travel to India during the summer, rates will be cheaper than those quoted. Please bear this in mind if comparing prices as we always aim to deliver exceptional value. Prices are based on superior accommodation. Standard and deluxe accommodation available upon request. Please note that discounts will apply if there are more 4 or more people in your travelling party, since fixed costs like transportation and guiding are shared across the group.

Date	Price/Person	Single Supp.
------	--------------	--------------