

Down Africa Way - 33 days

go guide

don't leave home without it



A World Of Discovery



Enjoy a real African adventure, from Nairobi to Johannesburg. Check out some of Africa's greatest game parks, idle about on the tropical island of Zanzibar, relax on the shores of Lake Malawi and enjoy the rush at Victoria Falls.



WHAT YOU SEE AND WHAT YOU GET

Trip Highlights

- **Kenya:** Nairobi, extend your stay to explore the sites.
- **Tanzania:** Arusha, the safari gateway. The Serengeti and Ngorongoro Crater (an optional excursion). Views of Mt Meru and Mt Kilimanjaro. Pangani, a historical coastal town. Dar es Salaam, Tanzania's largest city. Mikumi National Park (transit only).
- **Zanzibar:** (optional) Beautiful northern beaches & historic Stone Town (UNESCO-listed).

- **Malawi:** Lake Malawi, one of the African Great Lakes, with beautiful beaches, bays and inlets.
- **Zambia:** Livingstone & Mosi-oa-Tunya National Park, Zambia's gateway to Victoria Falls (optional).
- **Botswana:** Chobe National Park, famous for its herds of elephants. Boat cruise along the Chobe River. The Okavango Delta (optional excursion).
- **Zimbabwe:** UNESCO Listed Victoria Falls, one of the natural wonders of the world.
- **South Africa:** Kruger National Park, South Africa's flagship game reserve. The Blyde River Canyon and the scenic Panorama Route. Johannesburg - extend your stay to explore the city.

What's Included

- Arrival transfer from Nairobi Airport on day 1
- 1st night pre expedition dorm accommodation at Acacia Camp Nairobi (upgrades available), 28 nights camping
- Transport in fully equipped expedition truck
- Services of 3 person crew (leader, driver, cook)
- All camping fees & appropriate equipment
- 28 breakfasts, 24 lunches and 25 dinners
- Return ferry to Zanzibar island
- Park entry & game drive in Chobe NP and Kruger NP
- Chobe River boat trip
- All road taxes & tolls

What's Not Included

- International flights and visas
- Accommodation in Zanzibar
- Sleeping bag and roll mat - please bring your own
- Tipping - an entirely personal gesture
- Optional activities

Local Payment

USD \$705

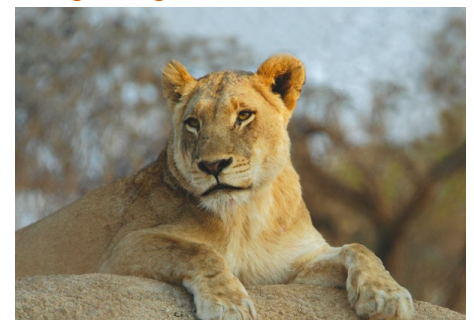
The local payment is a cost per person which needs to be paid in US Dollars cash only. It is this payment which in part covers the park fees and other inclusions such as meals as detailed under 'what you get'. The local payment also covers your arrival transfer and 1st night's accommodation. Please note that due to exchange rate fluctuations in the US dollar, the local payment amount may be subject to changes. This payment will be collected by your tour leader at the Welcome Meeting on day 1.

DETAILED ITINERARY

Day 1 : Nairobi

Saturday. Welcome to Kenya! You will be met in Nairobi Airport arrivals hall by our representative holding an on the go tours/Africa Travel Company sign and transferred to the Acacia Camp Nairobi - Magadi Road (off Langata Road), Nairobi. Your first night will be spent in dormitory rooms with shared facilities. Upgrades to single and twin en suite rooms are available upon request and subject to availability. Today there is a pre departure meeting at 17:00. **Overnight - Nairobi**

Days 2-5 : Optional Serengeti & Ngorongoro



Nairobi - Arusha (Tanzania). Leaving Nairobi we travel south, crossing the border into Tanzania at Namanga. Staying in a lovely campsite in Meserani on the outskirts of Arusha, before heading out on our Serengeti and Ngorongoro Crater excursion tomorrow.

Down Africa Way - 33 days

www.onthegotours.com
uk 020 7371 1113 info@onthegotours.com
aus 1300 855 684 aus-info@onthegotours.com
nz 0800 44 77 69 can 1 866 890 7038
usa 1 866 377 6147 sa 0800 982 686

This Go Guide has been compiled with care and good faith. It gives an accurate illustration of the proposed arrangements for this holiday. Circumstances beyond our control such as changes in local conditions, inclement weather or other reasons could force us to make changes to this itinerary. This document does not form part of a contract between the traveller and on the go and their affiliates. Any costs shown are subject to change though are an accurate reflection of costs at time of writing. Please also note that visa requirements are subject to change and are the responsibility of the traveller and not that of on the go

updated on 19-01-2012



Days 3 - 5 Optional Ngorongoro Crater & Serengeti Excursion

Arusha is a pleasant town situated at the base of Mount Meru, and is the starting point for safaris into the Serengeti, Tarangire and Lake Manyara National Parks, and the Ngorongoro Conservation Area. In the morning on day 3 we have the opportunity to explore this thriving town while we stock up on provisions needed for our excursion. You may choose to wander the vibrant craft markets, stock up on supplies or perhaps catch up on the news back home at one of the small internet cafe available. Heading back to our base camp, Meserani Snake Park, those that are participating in the optional excursions to Ngorongoro Crater and Serengeti National Park can start to prepare for their departure this afternoon. The excursion is offered by a local Tanzanian operator who conducts the trip into the Parks in 4WD vehicles (In peak season, there may be a minivan or bus transfer to Karatu), which are adapted for safari use.

For those not opting to visit the Ngorongoro Crater or Serengeti National Park, the next days are spent at leisure enjoying the Meserani reptile park, Masai Cultural Museum and the surrounding villages and craft markets. Alternatively the town of Arusha is close by to explore. The driver and cook remain behind in Dar es Salaam during the excursion.

The Optional Ngorongoro/Serengeti excursion takes us via the Masai town of Mtu Wa Mbu (Mosquito River) that lies adjacent to the Lake Manyara National Park and up the Rift Valley Escarpment to the higher lying village of Karatu. Karatu offers magnificent views over the surrounding hills and has many well established wheat farms that add to the picturesque panoramas. We spend the evening at a pleasant campsite in Karatu. The following morning we depart early for the Ngorongoro Conservation area and head into the wildlife rich Ngorongoro Crater. This World Heritage Site boasts some of the best game viewing in Africa – including the elusive Black Rhino.

After our game drive in the Crater, we continue down the Crater rim and past the 'Cradle of Mankind' on our way to the Serengeti National Park. We cross the vast plains as we game drive through the southern and central areas in the park. Tonight we bush camp (no ablutions) in the wild surrounded by the sounds of the African wilderness. In the morning, we head off for another game drive and explore the landscape in search of the resident wildlife. With some luck, we may see some of Africa's 'Big 5'!

After our morning drive, we head back across the plains and the lush Crater rim to our truck at Arusha, where we spend the evening musing over our thrilling wildlife experience. **Overnight - Arusha (4), OR optional Karatu & Serengeti (B:3, L:4, D:4)**

Days 6-7 : Pangani & Dar es Salaam

Arusha - Pangani - Dar es Salaam. On day 6 we head to Arusha in the morning to stock up on supplies before continuing on towards Dar es Salaam. On the way we drive through the town of Moshi situated at the magnificent

Mount Kilimanjaro – Africa's highest mountain. Moshi is the base for Mount Kilimanjaro climbing expeditions, and weather permitting; we may even catch a glimpse of this magical mountain's snowy summit - a photo opportunity not to be missed! We pass through vast sisal plantations surrounded by The Usambara and Pare Mountain ranges, before reaching our lovely campsite nestled between these mountains, midway between Arusha and Dar es Salaam.

The following day we continue on to Dar es Salaam. Travelling through lush scenery and palm trees, we near the warm Indian Ocean. Today's drive time is extended due to the heavier amount of traffic heading in to the city, but the sights and sounds of Dar's vibrant outer suburbs are sure to keep you entertained. Look out for the colourful shop-fronts with their sometimes humorous 'catch phrases'. On arrival in Dar es Salaam we make our way to our lovely seaside campsite and prepare for our departure to Zanzibar the next morning.

Overnight - Pangani (1), Dar es Salaam (1) (B:2, L:2, D:2)

Days 8-10 : Zanzibar



Dar es Salaam - Zanzibar (optional). A ferry from Dar es Salaam takes us to the "Spice Island," where we have the option to spend the next 3 nights. Zanzibar is steeped in history and was one of the major starting points for most East African explorers in their quest for new lands. New passengers may join us to replace those that'll leave us at the end of our excursion to Zanzibar.

PLEASE NOTE: Accommodation and Meals are for your own account whilst on Zanzibar, as it is our experience that passengers prefer to explore the island on their own, and in accordance with their own budget. The Trip Leader joins you and can arrange your accommodation, while meals can be enjoyed from a wide selection of restaurants. There are also a wide variety of optional excursions on offer – please see the price guide on the end of this document for more details.

History aside, Zanzibar offers a wealth of experiences for the visitor. Today the quiet streets of the old Stone Town still retain their Arabic influence, from the Medina-like shops to the palaces of the Sultans, who founded their vast empires on the spoils of the slave and ivory trade. The island is famous for its spices and an excursion around a spice plantation is always a fascinating experience. Other options include a trip to the beautiful beaches and giant tortoises of Prison

Island, a full day scuba dive in Nungwe or a fishing trip in a traditional dhow. Mopeds are available for hire if you'd like to explore the more remote areas of the island. Zanzibar is a seafood lover's paradise. Numerous restaurants offer a great variety of the freshest catch from the ocean - crayfish being a popular speciality. Alternatively, mingle with the locals for dinner at the Forodhani Gardens seafront market, where delicious, inexpensive seafood is on offer.

For those not opting to visit the island of Zanzibar, the next 3 days are spent at leisure at the beach campsite in Dar es Salaam. There are various optional excursions available from the camp including diving, snorkelling and fishing trips. The driver and cook remain behind in Dar es Salaam during the excursion. **Overnight - Dar es Salaam (3) OR optional Zanzibar (3) (B:1)**

Days 11-12 : Mikumi & Iringa

Zanzibar - Dar es Salaam - Iringa. Leaving Zanzibar in the afternoon, we return to the mainland and another night in Dar es Salaam. Arrival back to camp is usually in the late afternoon, or early evening.

The next morning we leave Dar es Salaam and head south. We pass through the Mikumi National Park where it is possible to view a range of wildlife from the roadside, totally impervious to the passing traffic. We travel towards Iringa where we spend the night in a beautiful rustic campsite famous for its Amarula Hot Chocolates and its steamy showers! **Overnight - Dar es Salaam (1), Iringa (1) (B:1, L:1, D:2)**

Days 13-16 : Lake Malawi

Iringa - Lake Malawi (Malawi). Winding our way through the beauty of the Tukuyu tea and banana plantations, we head towards Malawi entering the 'Warm Heart of Africa' through the border post at Songwe. Malawi is a landlocked country with 20% of its total area made up of beautiful Lake Malawi. We travel the length of the western side of the lake, stopping off at various bays and inlets over the next 4 days.

Spend the days learning the game of bao from the locals, scour the markets for a bargain or simply relax on the pristine beaches. Malawi's temperate climate allows for swimming in the clear blue freshwater lake all year round. Explore the beautiful shore where you'll happen upon the local fishermen sorting their catch. Traditional fishing techniques are still practiced and to appreciate their boating skills, try to paddle a dugout canoe yourself! At night you'll see the 'fairy' lights of the fishermen out on the lake. The various beachside campsites along Lake Malawi's shores offer many optional Excursions including a variety of water sports, horseback rides and a visit to the local village and school (see the optional excursions guide at the end of this document). **Overnight - Lake Malawi (B:4, L:4, D:4)**



Days 17-18 : Chipata & Lusaka



Lake Malawi - Chipata - Lusaka (Zambia). We head away from Lake Malawi, and stop off in the capital, Lilongwe, a small city distinctively divided into the old town and the new administrative centre, to stock up on supplies before crossing into Zambia where we spend the night in a beautiful little campsite just 10 km after the Malawi/Zambia border.

From Chipata, we head south-west via the Great East Road to our campsite on the outskirts of Zambia's capital city, Lusaka. While today is mostly spent driving, we do cross the impressive Luangwa River Bridge which is heavily guarded due to its close proximity to the Zimbabwean & Malawian borders. We also pass through a few of the villages and towns of Zambia along the way. Prosperous during the copper boom in the 60's, Zambia was able to build infrastructure at the main mining and farming communities. After the fall of the copper industry, the country was left virtually bankrupt and existing infrastructure was left to fall to ruin. Due to foreign investment and a rise in the mining industry, Zambia is today once again starting to prosper. The difference is evident in the cities with the availability of foreign stores, banks and imported cars, while the villages and smaller towns are still to catch up. Our campsite is home to some local wildlife including the largest antelope – Eland. **Overnight - Chipata (1), Lusaka (1)** (B:2, L:2, D:2)

Day 19 : Livingstone

Lusaka - Livingstone. Heading further south, we journey through the southern Zambian towns mostly supporting local agriculture and farming on our way to Livingstone. The Victoria Falls or Mosi-oa-Tunya (the Smoke that Thunders) is one of the Seven Natural Wonders of the World and it's not difficult to see why. At 1700 m wide and around 100 m high, this is the world's largest sheet of falling water and a memorable sight on any African Safari! The Falls can be viewed from the Mosi-oa-Tunya National Park, Zambia - a fantastic photo opportunity. Tonight we have the option of enjoying a sunset dinner cruise on the mighty Zambezi. **Overnight - Livingstone** (B, L, D)

Day 20 : Chobe N. P.



Livingstone - Chobe (Botswana). We leave Zambia and cross the border into Botswana at the Kazangula Ferry. Once we've completed the border formalities, we continue to the town of Kasane, situated on the banks of the Chobe River. The Chobe River forms a border between Botswana and Namibia and Zambia and is the main water source to the Chobe National Park. After lunch, we take a boat cruise along the Chobe River. Once we return and are packed and prepared, we leave for our Chobe National Park Overnight Mobile excursion – an overnight experience in the wilds of the Chobe National park. Chobe is one of Botswana's premier game parks, renowned for its large elephant herds. Spend the afternoon in search of wildlife while we game drive to our camp within the park where we spend the evening surrounded by the night-time noises of the local wildlife. Look out for the rare Sable and Roan Antelope on your game drive, with their majestic backward slanting horns, or try keep a count of the Lilac Breasted Roller's that swoop by!

Please note: Should we not be able to stay in Chobe National Park due to lack of availability at the bush camp, this excursion will be replaced with an overnight trip in the bushveld of the Lesoma Valley which is situated in the Kasane Forest Reserve adjacent to the Chobe NP and the Matsetsi Game area of Zimbabwe. Lesoma is equally rich in wildlife and affords a similar experience to the above. **Overnight - Chobe N. P.** (B, L, D)

Day 21 : Victoria Falls

Chobe - Victoria Falls (Zimbabwe). After our night in the bush, we head out early to continue our search for wildlife, before packing up the camp and heading back to Kasane. Once we have returned to camp, we get back on our truck and continue to the border of Zimbabwe. Once we've completed border formalities, we have a short drive to the nearby Victoria Falls. Named after the famous World Heritage site and Water Falls, the town of Victoria Falls is situated on the Zambezi River and surrounded by the Victoria Falls National Park. Our campsite is conveniently situated in the centre of town, and within walking distance of the adventure booking agents, restaurants and shops. A 20 minute walk down the main road takes you to the entry point to view the falls, which are situated between Zimbabwe and Zambia.

After our adventure activities briefing (see optional excursions guide at the end of this Go Guide), the afternoon is spent relaxing at the campsite's

swimming pool, viewing the Victoria Falls, or exploring the many sights and delights of this town! **Overnight - Victoria Falls** (B)

Days 22-23 : Victoria Falls



The next 2 days are spent relaxing or participating in a myriad of optional excursions. Some of our fellow passengers will leave us in Vic Falls, to be replaced by new passengers joining us for the next leg of our trek.

Optional excursions include elephant back safaris, horseback safaris, walking with lions, a visit to the crocodile ranch, boat cruises and golf at The Elephant Hills Resort. Adrenalin junkies can bungee from the Victoria Falls Bridge connecting Zimbabwe and Zambia or abseil down the Batoka Gorge - neither activity is for the faint hearted! All year round, flights in fixed wing, micro light and ultra light aircraft or helicopters provide an aerial perspective over this magnificent World Heritage Site. White water rafting on the Zambezi is world class. Beside the excitement of the Grade 5 rapids, there are the "floats," where there is time to admire the scenic cliffs and the occasional wildlife on the riverbanks. **Overnight - Victoria Falls** (B:2)

Days 24-25 : Chobe N. P.

Victoria Falls - Chobe (Botswana). We head out from Victoria Falls to the border crossing to Botswana. Once we've completed the border formalities, we continue to the town of Kasane, situated on the banks of the Chobe River. Here we have a second opportunity to take part in the Chobe Overnight Mobile Excursion. For those who'd prefer to stay behind at the campsite in Kasane, there is an option to do an early morning game drive on the morning of day 25 instead.

After returning to camp on day 25, we have a bit of free time to relax and after lunch we head off on a boat cruise along the Chobe River. The Chobe River forms a natural border between Botswana, Namibia and Zambia and is the main water source to the Chobe National Park. Elephant, hippo and many bird species can be viewed from the boat while we watch a glorious African sunset. **Overnight - Chobe N. P.** (B:2, L:2, D:2)



Days 26-27 : Optional Okavango



Maun - Okavango Delta (optional). The Delta is a huge expanse of water, which has travelled from the Angolan highlands, spreading out to form the largest inland delta in the world. Studded with exotic islands, The Delta is renowned for its incredible variety of bird life and animals and is unique to Southern Africa.

Here we have the opportunity to take the optional 3 Day / 2 Night Drive in Mokoro Excursion into the Delta. After an early rise, we pack our expedition vehicle and from Maun we drive north for a couple of hours to reach the mokoro poler's station. The Delta region is studded with many local villages where many families live in a traditional way. Some of the villages are very remote and can only be reached by the traditional mode of transport – the Mokoro. Mokoros are dugout canoes manoeuvred through the waterways by local guides who "pole" them through the reeds. At the Mokoro station, we meet our 'polers' and pack our supplies before heading out into the waterways. After a couple of hours along the waterways, our guides find us a place to camp, and later in the afternoon we set off on an afternoon game walk, allowing us to experience The Delta wilderness. The camp is situated in an open wilderness area with no ablution facilities.

Enjoy rest, relaxation and Delta experiences on day 27, when we have the opportunity to partake in a number of activities including swimming, game walks, mokoro cruises and even a chance to try our hands at poling our own mokoro! There is also ample time to relax and rest during the hotter hours of the day, so challenge your new friends to a game of cards, or chat with your guides about their culture and lifestyle, or simply lie back and enjoy the sounds of the surrounding wilderness.

For those who'd prefer not to explore The Delta, spend the next 2 days at the lovely campsite relaxing by the swimming pool or challenging each other to a game of volleyball. There is also a crocodile farm nearby that has it's feeding times open to campsite visitors. The driver and cook remain behind in Maun during the excursion.
Overnight - Maun OR optional Okavango Delta (B:2, L:2, D:2)

Day 28 : Maun

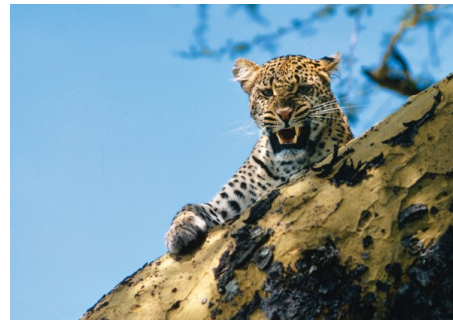
Okavango Delta - Maun. This morning affords us a final opportunity for a game walk before packing up and setting off back to Maun. After our Mokoro ride and vehicle transfer, we arrive back in the afternoon

and have the chance to complete our picture of the Okavango Delta by taking an optional scenic flight over The Delta (dependent on weather conditions & availability). **Overnight - Maun (B, L, D)**

Day 29 : Palapye

Maun - Palapye (Zimbabwe). Heading out early, we have a fairly long (450kms) drive today to the small town of Palapye, situated about halfway between Francistown and Gaborone (Botswana's Capitol). This popular 'stopover' town for those en route to South Africa, is well known for the Morupule Colliery coal mines which supplies Morupule Power Station, Botswana's principal domestic source of electricity.
Overnight - Palapye (B, L, D)

Day 30 : Blyde River Canyon



Palapye - Blydepoort (South Africa). This morning we cross into South Africa, and continue across to our camp overlooking the impressive Blyde River Canyon. Named for the Blyde River that runs through it, the canyon is 26km long, and averages 800m deep and forms the northern edge of the impressive Drakensberg Mountain Range. It is classified as a 'green canyon' due to the uncommon occurrence of vegetation that lines it (uncommon as most canyons are in desert areas and are fairly barren). The main viewpoints along the canyon are the 3 Rondavels, named for the shape of the traditional huts or houses the indigenous people of the area used to live in; and Gods Window that affords a breathtaking view across the canyon and surrounding area. **Overnight - Blydepoort (B, L, D)**

Days 31-32 : Kruger N.P.

Heading through the breathtaking Panorama Route, we stop off at various viewpoints today including scenic God's Window. We pass through the small town of Graskop, and head toward the Kruger National Park and our campsite on the border of the park. Situated just 10km from Kruger's Phabeni Gate, the camp is home to Giraffe, Zebra and Hippo to name but a few.

The next day we visit the amazing Kruger National Park in search of some of the 146 mammals, 500 bird, 114 reptile, 33 amphibian & 49 fish species that make this park their home. We travel in our truck along the main game viewing routes within the park and stop off at some of the camps along the way. For those who wish to upgrade to an open vehicle game drive, this can be arranged with the trip leader at an additional cost. **Overnight - Hazyview (B:2, L:2, D:2)**

Day 33 : Johannesburg

Wednesday. Hazyview - Johannesburg. After breakfast, we begin our journey to our final destination; Egoli the place of gold (Johannesburg), Johannesburg is the capital of Gauteng, which is a province in South Africa. On arrival in Johannesburg we unload the truck for the final time, exchange addresses and part ways, having just experienced a trip of a lifetime!(B)

Masai Mara Bonus Trip

When you book this trip, you are entitled to receive a BONUS Masai Mara Safari before your trip starts. A Local Payment of US\$235 is applicable for this trip. This offer must be taken up at the same time you book this trip.

Includes: Return transfer from Nairobi, 1 night Acacia Camp Nairobi, 2 nights at Acacia Camp Masai Mara, a full day exploring the Masai Mara on day 3, 2 breakfasts, 1 lunch and 1 dinner.

This safari must be booked at the same time your main trip.

Starts Wednesday, ends Saturday.

There is a pre departure meeting for this trip at Acacia Camp Nairobi at 17:00 on Wednesday.

If you would like to stay in the Masai Mara and join up with your camping expedition there (instead of returning to Nairobi) this can be arranged for an additional cost of US \$120 which you will need to pay locally. Please specify at time of booking.

Please contact us for more details. Conditions apply.

Please Note

This expedition is run in conjunction with Africa Travel Company.

This itinerary should be used as a guide only and may vary from day to day depending on road & weather conditions, political situations and group decisions.

All prices & Local Payments are subject to change.

Due to Tourism Laws in some of the countries we visit, there may be a truck and crew change during the trip.

On select departure dates, the final leg of this trip (from Victoria Falls to Johannesburg) may coincide with a family departure, so parents with children/teens aged 6 - 17 may join the group.

Things To Bring

- A sleeping bag and roll mat
- For extra comfort, bring a travel pillow
- Spare camera batteries/film and dustbag
- Mosquito spray (with active DEET ingredient)
- Your own personal first aid kit
- A torch
- A small daypack for your day-to-day needs.

Down Africa Way - 33 days



- Antibacterial wipes
- A photocopy of your passport data pages
- Your Yellow Fever Vaccination Certificate
- Your travel insurance policy details
- Hat, sunglasses & sunscreen
- Warm clothing - raincoat, warm hat, socks etc as across Africa wet/dry and hot/cool climatic periods change invariably.

Budgeting

In budgeting for your holiday, we recommend US \$160 - \$210 per person per week for an African safari. Budget more if you plan on buying a lot of souvenirs. This amount should be sufficient to allow for expenses such as drinks, snacks, small entry fees, occasional meals out and accommodation and meals away from the truck - for example on the island of Zanzibar.

Budget for your optional excursions and visas separately.

KNOW BEFORE YOU GO

Passports & Visas

Please ensure that you have at least two blank pages in your passport, plus an additional blank page for each visa/African country you are visiting. If travelling on one of our longer overland safaris we recommend that you have at least 12 blank pages in your passport.

Please also note that your passport must be valid for a minimum of six months from the end date of your trip.

Any visa information provided in this document is for general guidance purposes only, visa requirements and fees are subject to change. It is essential that you check current entry requirements with each relevant embassy/consulate prior to departure. Visa procurement is the responsibility of the traveller and not of On The Go.

Botswana Country Guide

Visa

UK, Ireland, Australian, New Zealand, USA, Canadian and South African citizens do not require a visa for entrance into Botswana.

The few countries that do require visas; mostly Eastern European and Asian Nationals, need to obtain them prior to arrival at the border. Visas are not issued at Botswana ports of entry, if you arrive without a visa, immigration officials will refuse you entry to Botswana.

Vaccinations

You should seek medical advice before travelling to Botswana from your local health practitioner and ensure that all you receive all of the appropriate vaccinations. Typically the list includes typhoid, tetanus, polio, hepatitis A and B (for stays over 4 weeks) and meningitis.

A yellow fever vaccination certificate is required from travellers arriving from infected areas or who

were in transit through infected areas (unless they remained onboard or at the airport).

Certain areas of Botswana have a risk of malaria and these are; northern parts and southern provinces of the country and the Okavango Delta area – if travelling to these regions we strongly recommend that you take your anti-malaria medication. Adequate measures to avoid mosquito bites, such as nets and creams and covering up after sundown, are also essential.

Currency & Banking

USD 1 = BWP 7.4 GBP 1 = 11.7 EURO 1 = 10.2 AUD 1 = 7.6

Subject to fluctuation.

The currency of Botswana is the Botswana Pulas (BWP) 1 Pula = 100 Thebe. Notes are in denominations of BWP10, 20, 50 and 100.

Coins are in denominations of BWP1, 50, 25, 10, 5, 1.

There are no restrictions on the import of local or foreign currencies, provided they are declared on arrival. Export of local currency is limited to BWP50 and foreign currencies up to the amount declared on arrival. It is easy to change most forms of currency including US\$, GB£, Euros and South African Rand. The best place to change money in Botswana is the bureau de changes as banks charge commission to change either cash or travellers cheques. ATMs are available in all main towns, cities, shopping centres and most petrol stations. MasterCard, Visa, American Express and Diners Club are all widely accepted.

Travellers cheques should be in US Dollars or Pound Sterling to avoid additional exchange rate charges. Proof of identity may be requested in some instances, so it's useful to carry a passport or some form of photo identification. In large cities travellers cheques can incur a high surcharge.

Banking hours: Mon-Fri 0900-1530, Sat 0830-1100.

Time & Voltage

Time Zone - Botswana is 2 hours ahead of GMT. Daylight saving time is not observed.

The standard voltage is 220 - 240V. Primary sockets require a 'Type M' - South African, electrical plug which has three thick circular pins. You will need a voltage converter, and plug adapter in order to use U.S. appliances.

Climate

Botswana's climate is mainly temperate. During the summer months (October-April) the weather can be very hot with daytime temperatures of around 30 Celsius and higher. The rainy season (typically lasting from January to March) can be hot with temperatures still in the mid 30's and only dropping to around the mid 20's overnight. Winter (May-September) brings a cool change yet is still reasonably warm and mostly pleasant with an average temperature of around 25°C. Early mornings and evenings may be cold and frosty especially in the Kalahari region. The amount of

rainfall decreases the further you travel west or southwards during the winter and rainy season months.

Kenya Country Guide

Visas

UK, Irish, Australian, New Zealand, USA, Canadian and RSA citizens require a visa for Kenya. Visas can be obtained by most nationalities upon arrival at the airport, however it is advisable to procure your visa from the nearest Kenyan Embassy/High Commission prior to departure. There are often very long visa queues at the airport.

For most nationalities a single entry visa currently costs US \$50 and is valid for a period of three months and a multiple entry visa is US \$110. At the airport the visa fee must be paid in a convertible currency (eg US Dollars). All passengers require an onward/return tickets and sufficient funds for length of intended stay (at least US\$500).

Vaccinations

You should seek medical advice before travelling to Kenya from your local health practitioner and ensure that all you receive all of the appropriate vaccinations. As a guide diphtheria, hepatitis A, polio, tetanus and typhoid vaccinations are strongly recommended.

Kenya is affected by malaria – we strongly recommend that you take anti-malaria medication. Take your medication exactly as it's prescribed and directed, don't skip any medication! Adequate measures to avoid mosquito bites include: insect repellent, sleeping under a mosquito net and wearing long sleeve clothing and long trousers in the evenings.

A Yellow Fever Certificate of Vaccination is required if arriving from an infected area and travellers arriving from non-endemic zones should note that vaccination is strongly recommended for travel outside the urban areas, even if an outbreak of the disease has not been reported.

Time & Voltage

Kenya is 3 hours ahead of GMT. Daylight saving time is not observed.

In Kenya the standard voltage is 220-240V. Primary sockets require a 'Type G' - British BS-1363 type, three pin plug. You will need a voltage converter, and plug adapter in order to use U.S. appliances. We recommend packing a universal adapter.

Currency

USD 1 = KES 100 GBP 1 = 158 EURO 1 = 137 AUD 1 = 102

Subject to fluctuation. Kenyan Shilling (code KES, symbol KSh).

1 KSh = 100 cents.

Notes are in denominations of: KSh1,000, 500, 200, 100 and 50.

Coins are in denominations of KSh20, 10 and 5.



Banking hours: Mon-Fri 0900-1500, Sat 0900-1100. You can exchange money in banks or bureau de changes. Be aware that old pre-2003 US\$ banknotes or torn or marked banknotes are difficult to exchange in Africa so make sure you take crisp new notes! In major towns/cities most banks have an ATM. American Express, Diners Club, MasterCard and Visa cards are all widely accepted.

Travellers cheques can be changed at banks, these should be in US Dollars or Pound Sterling to avoid additional exchange rate charges. Most banks will want to see your passport and proof of purchase receipt before cashing your travellers cheques. Please Note: Travellers cheques can be difficult to cash and often have restrictions of about US \$100 a day maximum. They also tend to attract high commission charges, especially when exchanging for hard currency.

Climate

Kenya is an excellent year round destination with a favourable climate and reasonably low rainfall. In general the hottest months are December to March, although the climate varies enormously from place to place. The lowland coastal areas are tropical, with year round high temperatures and humidity, which is at its peak in April and May, although tempered by monsoon winds. The highlands are more temperate with four seasons. Nairobi has a very pleasant climate throughout the year due to its altitude. Near Lake Victoria, the temperatures are much higher and rainfall can be heavy.

Malawi Country Guide

Visas

Most nationalities including UK, Ireland, Australian, New Zealand, USA, Canadian and South African citizens do not require a visa for entrance into Malawi.

The few countries that do require visas need to obtain them prior to arrival at the border, visas are not issued at Malawi ports of entry. Therefore please check current entry requirements with your Malawi Embassy prior to departure.

Vaccinations

Seek advice from your doctor or travel clinic at least six weeks prior to departure about what vaccinations you require. Typically the list includes typhoid, tetanus, polio, hepatitis A and B and meningitis.

A malaria risk exists throughout the country, we strongly recommend that you take anti-malaria medication.

A Yellow Fever Vaccination Certificate is required from travellers over one year of age coming from infected areas.

Currency

USD 1 = 165 GBP 1 = 263 EURO 1 = 229 AUD 1 = 172

Subject to fluctuation.

The currency of Malawi is the Malawian Kwacha (MWK, symbol MK).
1 MWK = 100 tambala.

Notes are in denominations of Mk500, 200, 100, 50, 20, 10 and 5.
Coins are in denominations of Mk1 and 20, 10, 5, 2 and 1 tambala.

On arrival in Lilongwe you will be able to convert money into MKW. The bureau de changes are the easiest place to change money, and US\$ and GB £ are accepted in both cash and travellers cheque format. Travellers cheques attract a commission charge and a lower exchange rate than cash, which is changed with no commission.

If coming south from Tanzania, MKW can be purchased on the border using US\$ cash. ATMs are effectively non-existent for foreign cards in Malawi.

Time & Voltage

Time Zone - Malawi is 2 hours ahead of GMT.
Daylight saving time is not observed

Standard voltage is 220-240V. Electrical sockets in Malawi are the "Type G" British BS-1363 type. You will need a voltage converter, and plug adapter in order to use U.S. appliances

Climate

There are three seasons in Malawi. The rainy season extends from November to April, the cool season from May to July and the dry season from August to October. Temperatures and rainfall are greatly influenced by Lake Malawi and altitude, which varies from 37 metres (in the Lower Shire Valley) to 3050 metres (Mount Mulanje). Along the lakeshore, the mean annual temperature is 24°C, and humidity can be high during the rainy season.

Tanzania Country Guide

Visas

UK, Irish, Australian, New Zealand, USA, Canadian and RSA citizens require a visa for Tanzania. A single entry visas can be obtained by most nationalities upon arrival at Dar es Salaam, Kilimanjaro and Zanzibar Airport or at Namanga border crossing point, between Tanzania and Kenya. The current visa cost is US\$50 for all nationalities, which can be paid in US\$, GB£ or Euro cash. The three East African countries of Kenya, Tanzania and Uganda have an agreement that you can travel freely between these countries and do not have to get another visa when returning to each. If you exit this region and enter any other country, including Rwanda and the Democratic Republic of Congo, you will need to get new visas to re enter Kenya, Tanzania and Uganda.

Vaccinations

Seek advice from your doctor or travel clinic at least six weeks prior to departure about what vaccinations you require. Typically the list includes

typhoid, tetanus, polio, hepatitis A and B (for stays over 4 weeks) and meningitis.

A malarial risk exists throughout Tanzania – we strongly recommend that you take your anti-malaria medication. Precautionary measures to take to prevent contact with mosquitoes include: insect repellent, cover up at sundown, sleep under a mosquito net and wear long sleeve clothing and long trousers in the evenings.

A Yellow Fever International Certificate of Vaccination is required from travellers over one, arriving from countries infected with yellow fever or who were in transit through infected areas (unless they remained onboard or at the airport); this is particularly relevant if traveling from neighbouring African countries. If visiting Zanzibar from mainland Tanzania, a yellow fever certificate must be produced to gain entry.

Currency

USD 1 = TZS 1717 GBP 1 = 2710 EURO 1 = 2370
AUD 1 = 1762

Subject to fluctuation. Tanzanian Shilling (code TZS, symbol TSh).

1 TSh = 100 cents.

Notes are in denominations of TSh10,000, 5000, 2,000, 1,000 and 500. Coins are in denominations of TSh200, 100, 50, 20 and 10.

The Tanzanian Shilling is non exportable or importable. You can exchange US Dollars, Pound Sterling or Euro cash at bureaux de changes or banks in larger towns/cities. Cash is changed with no commission. Exchange rates vary depending upon the denomination of the note that you want to change and generally smaller notes attract a lower exchange rate than high ones. Be aware that old pre-2003 US\$ banknotes or torn or marked banknotes are difficult to exchange in Africa so make sure you take crisp new notes. Alternatively most large towns/cities have an ATM where cash can be withdrawn using Visa or MasterCard. Credit cards are very rarely accepted for making purchases.

Banking hours: Mon-Fri 0830-1230; Sat 0830-1300. Bureaux de change have longer hours and in the cities open on Sundays.

Travellers cheques are more difficult to change and require proof of purchase and often have restrictions of about US\$100 a day maximum. Please note that there is a surcharge when paying by travellers cheques.

Time & Voltage

Tanzania Time Zone - 3 hours ahead of GMT.
Daylight saving time is not observed.

Standard voltage is 220-240V. Primary sockets require a Type G British BS-1363 or Type D Indian BS-546 type, three pin plug. You will need a voltage converter, and plug adapter in order to use U.S.



appliances. We recommend getting a universal adapter.

Climate

Tanzania is sunny and tropical (accept in the mountain regions). Given the sheer size of the country, the climate varies dramatically in different regions. In coastal regions and on the islands of Zanzibar and Pemba it is hot and humid year-round with higher rainfall, whilst inland, the central plateau is dry and hot and the north-western highlands are cooler. The long rains occur between mid-March and the end of May and there are also short, lighter rains during November and December. The driest months are June to October.

South Africa Country Guide

Visas

UK, Australian, New Zealand, USA and Canadian citizens do not require a tourist visa for South Africa for stays of up to 90 days.

Very few nationalities require South African visas prior to entry into the country. Most nationalities are able to get an entry stamp at the border on entering South Africa. Please contact your local South African embassy to find out if you require a visa prior to entering SA. If you are subject to visa requirements, you must apply and receive your visa before your departure for South Africa, visas are not issued at South African ports of entry.

Health & Vaccinations

You should seek medical advice before travelling to South Africa from your local health practitioner and ensure that all you receive all of the appropriate vaccinations. As a guide tetanus, diphtheria, polio, hepatitis A (for stays over 4 weeks) and hepatitis B (for stays over 3 months) are recommended.

A yellow fever vaccination certificate is required from travellers over one, coming from infected areas.

A low malaria risk occurs in northern parts of Mpumalanga (as well as Kruger National park, northern and northeastern parts of KwaZulu-Natal). If travelling to these regions and/or the countries north of South Africa, where there is a high malaria risk, we strongly recommend that you take anti-malaria medication. Precautionary measures to take to prevent contact with mosquitoes include: insect repellent, cover up at sundown, sleep under a mosquito net and wear long sleeve clothing and long trousers in the evenings.

Tap water in South Africa is considered safe to drink in all urban areas and most rural areas. There are exceptions, such as in parts of the Kruger National Park, and in areas near the Namibian border, including the Kgalagadi Transfrontier Park. These areas – and most others where the water's not drinkable – are well-marked with signs.

Hospital facilities are generally very good in towns and cities but in rural regions medical facilities are limited.

Currency

USD 1 = ZAR 8.3 GBP 1 = 13 EURO 1 = 11.3 AUD 1 = 8.4

Subject to fluctuation. South African currency is Rand (ZAR; symbol R)

1 Rand = 100 cents. Notes are in denominations of R200, 100, 50, 20 and 10. Coins are in denominations of R5, 2 and 1, and 50, 20, 10 and 5 cents.

Obtaining local currency within South Africa is very easy. ATMs are widely accessible and very reliable and offer the best rates of exchange. International credit cards are accepted in almost all shops, restaurants, hotels and game reserves.

Bureau de changes offer a quick and commission free service but are only found in the main centres such as Cape Town and Johannesburg. Travellers cheques can be changed at banks. These should be in US Dollars or Pound Sterling to avoid additional exchange rate charges. Please note that proof of identity may be requested in some instances, so it's useful to carry a passport or some form of photo identification. Travellers cheques can be difficult to exchange and tend to attract high commission fees.

Banking hours: Mon-Fri 0900-1530, Sat 0830-1100.

Rand can be used in Botswana, Namibia and South Africa, so if you are travelling on one of our overland safaris ample money for these three countries can be obtained prior to beginning your trip in Cape Town or Johannesburg. The Rand and Namibian dollar are tied to each other on an equal level and can be used interchangeably in Namibia. The Rand can also be easily converted to Pula in Botswana at good rates.

Time & Voltage

Time Zone - South Africa is 2 hours ahead of GMT. Daylight saving time is not observed

Standard voltage is 220-230V. Primary sockets require a 'Type M' - South African, electrical plug which has three thick circular pins. You will need a voltage converter, and plug adapter in order to use U.S. appliances.

Climate

Climatic conditions generally range from Mediterranean in the south western corner of the country to temperate in the interior plateau, and subtropical in the northeast. A small area in the northwest has a desert climate. Most of the country has warm, sunny days and cool nights. Rainfall generally occurs during summer (November-March), although in the southwest, around Cape Town, rainfall occurs in winter (from June-August). Temperatures are influenced by variations in elevation, terrain, and ocean currents.

Zambia Country Guide

Visas

UK, Australian, New Zealand, USA, Canadian citizens require a visa for Zambia. Visas can be obtained by most nationalities upon arrival at the airport/border. A single entry visa currently costs US \$50 and a double/multiple entry costs \$80. Irish and South African passport holders do not require a visa.

Vaccinations

You should seek medical advice before travelling to Zambia from your local health practitioner and ensure that all you receive all of the appropriate vaccinations. As a guide Tetanus, diphtheria, polio, hepatitis A and hepatitis B (for stays over 4 weeks) are strongly recommended.

Zambia has a malaria risk throughout the year in the whole country, therefore we strongly recommend that you take anti-malaria medication.

The yellow fever vaccination is required for passengers travelling to and from Zambia. All in-transit passengers travelling between Zambia and South Africa, irrespective of the time period in transit, will also be required to present their Yellow Fever Vaccination Certificate.

Currency

USD 1 = 4965 GBP 1 = 7894 EURO 1 = 6850 AUD 1 = 5110

Subject to fluctuation. Zambia's currency is the Zambia Kwacha (ZMK)

Notes are in denominations of ZMK50,000, 20,000, 10,000, 5,000, 1,000, 500, 100, 50 and 20. Coins are in denominations of ZMK10, 5 and 1, and 50 and 25 ngwee.

Banking hours vary but most are open from Mon - Fri 0815-1430

ATMs are available at Standard Chartered and Barclays Bank which accept Visa. Most large stores and hotels accept credit cards.

If travelling on one of our overland safaris there is no real need to convert any of your money to ZMK, as you will only be in Zambia for a short period of time. Campsites readily accept US\$ cash for food and beverages.

Time & Voltage

Time Zone - Zambia is 2 hours ahead of GMT. Daylight saving time is not observed.

Standard voltage is 230V. Zambia has several varieties of electrical sockets. The 3 primary sockets are 'Type C' - European, 'Type D' - Indian and 'Type G' - British. You will need a voltage converter and plug adapter in order to use U.S. appliances.

Down Africa Way - 33 days



Climate

Zambia is warm all year round, but has three distinct seasons. Between December and April the weather is hot and wet; from May to August it is cooler and dry; between September and November conditions are hot and dry. Average summer temperatures range between 25°C to 35°C, while in winter they can fall as low as 6°C at night, although daytime temperatures average 24°C.

Zimbabwe Country Guide

Visas

UK, Ireland, Australian, New Zealand, USA and Canadian passport holders require a visa to enter Zimbabwe, these visas are available at the border for the following costs: Australian, New Zealand and US citizens: US\$30 single/\$45 double entry visa. British and Irish is US\$55 single/\$70 double. Canadians can only obtain a single entry visa at the border for US \$75. South African passport holders can obtain a visa for free. Visas can be brought using post 2003 US\$ notes, GB£ or South African Rand.

Vaccinations

Seek advice from your doctor or travel clinic at least six weeks prior to departure about what vaccinations you require. Typically the list includes typhoid, tetanus, diphtheria, polio, hepatitis A and B (for stays over 4 weeks).

In Zimbabwe a malarial risk exists from November to June in all areas below 1200m and throughout the year in the Zambezi Valley. We strongly recommend that you take your anti-malaria medication. Other precautionary measures to prevent contact with mosquitoes include: insect repellent, cover up at sundown, sleep under a mosquito net and wear long sleeve clothing and long trousers in the evenings.

Yellow fever: A yellow fever vaccination certificate is required from travellers over one year of age coming from infected areas.

Currency

The Zimbabwean Dollar was abandoned in April 2009. The country has adopted a multi-currency scheme; the US Dollar and South African Rand can be used for domestic transactions.

Banking hours: Mon, Tues, Thurs, Fri - 0800-1500, Wed 0800-1300 and Sat - 0800-1130. In major towns/cities most banks have an ATM. American Express, Diners Club and Visa cards are widely accepted. Major foreign currencies can be exchanged at bureaux de change and banks at the official exchange rate.

Travellers cheques are accepted at banks, these should be in US Dollars or Pound Sterling to avoid additional exchange rate charges. Most banks will want to see your passport and proof of purchase receipt before cashing your travellers cheques. Please Note: Travellers cheques can be difficult to

cash so do not rely upon them as your sole source of funds.

Time & Voltage

Standard voltage is 220-240V. Primary sockets require a 'Type G' - British plug, or 'Type D' - old English plug or Indian plug. You will need a voltage converter and plug adapter in order to use U.S. appliances.

Zimbabwe is 2 hours ahead of GMT. Daylight saving time is not observed.

Climate

Although located in the tropics, temperate conditions prevail all year round in Zimbabwe as the climate is moderated by altitude and the inland position of the country.

Zimbabwe has a rainy season from November/December to March, during this time days are hot and sunny with possible afternoon thunderstorms. By April and May most of the rain is gone, skies are clear and days are sunny and warm. Night time temperatures drop dramatically between June and August although daytime temperatures remain pleasantly warm. Late August sees the start of the hot and dry season which continues until October.

OPTIONAL ACTIVITIES

We offer a number of locally operated optional activities and excursions on each of our expeditions. We feel that offering optional excursions affords a greater degree of flexibility, independence and choice to our travellers. To help you budget, below is a selection of optional excursions available on this trip.

Please note the following:

All prices are in US Dollars and are subject to change. Where activities occur away from your base, there may be an additional transfer cost.

Travellers cheques may be accepted for the Serengeti/Ngorongoro Excursions, although they are subject to a surcharge of at least 5%.

All accommodation and activities in Victoria Falls must be paid for in US\$ cash (GBP & ZAR also accepted at a lower rate).

All optional excursions are offered by 3rd parties and independently of on the go. They are undertaken at your own risk and on the go take no responsibility for personal loss/injury caused.

Gorilla Trekking - the price varies dependant on where gorilla trek takes place ie Uganda, DRC or Rwanda.

Botswana

3 day Okavango Delta Excursion US \$160
Chobe National Park Game Drive US \$40
Scenic Flight Over Okavango (5 per plane) US \$85

Kenya

Giraffe Centre. Pre/Post tour US \$20
Nairobi National Park half day. Pre/Post tour US \$85

Malawi

Fresh Water Diving at Kande Beach US \$45
Full Day Snorkelling US \$20
Horse Riding 2 - 3 hours US \$60 - \$90
Livingstonia Mission Hike 30km rtn US \$7
Traditional Healer Visit US \$7
Village Walk & Meal US \$15

South Africa

Kruger Park Night Drive US \$160
Kruger Park Open Vehicle Game Drive US \$75
Lion Park Jo'burg. Pre/Post Tour US \$60
Soweto Tour - J'burg/Pretoria - from US \$65

Tanzania

3 day Serengeti/Ngorongoro Excursion from US \$450
Olduvai Gorge US \$5

Zambia

Zambezi Sunset Dinner Cruise US \$80

Zanzibar

Dhow Fishing Trip US \$35
Dhow Sunset Cruise US \$30
Dolphin Trip US \$35
Moped Hire US \$70
Nungwe Half Day Snorkel Trip US \$35
Prison Island Snorkelling Trip US \$25
Scuba Diving from US \$75
Spice Tour US \$25
Stone Town Tour US \$40
Zanzibar Accommodation p.p.p.n US \$30-\$50

Zimbabwe

Bungee Jump (111m) US \$132
Elephant Back Safari US \$130
Entry to Vic Falls National Park US \$30
Full Day Adrenaline (min. 10) US \$150
Helicopter Over The Falls 15 mins US \$130
Horse Riding 3 hours US \$75
Microlight Over The Falls 15 mins US \$150
Rafting & Boarding Combo US \$165
Rafting On The Zambezi US \$130
Walk With Lions - Vic Falls US \$130