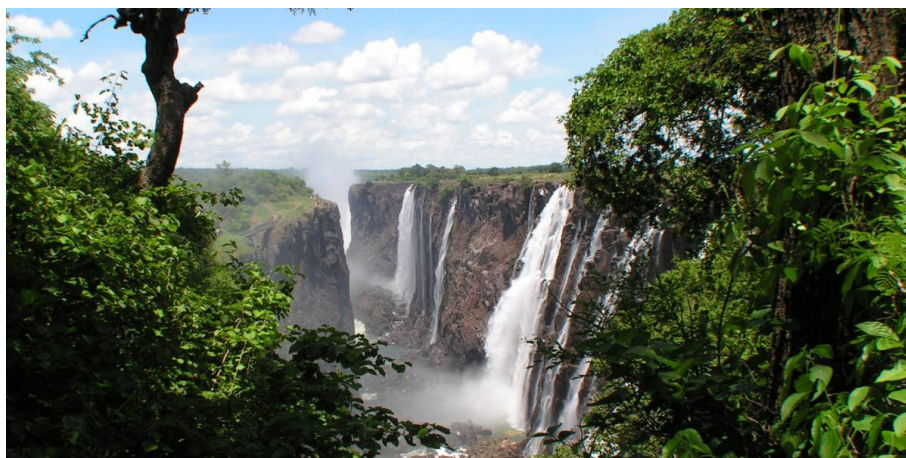


# Falls to Joburg

## 12 days | Victoria Falls to Johannesburg



*Kicking off at the majestic Victoria Falls in Zimbabwe and travelling through to South Africa's world famous Kruger National Park, taking in the best of Botswana along the way.*

### HIGHLIGHTS AND INCLUSIONS

#### Trip Highlights

- Kruger National Park - take a game drive through the famous national park, which is home to more species of mammals than any other in Africa
- Victoria Falls - admire the thundering falls and join optional activities including horseback safaris and a visit to a crocodile ranch
- Okavango Delta - ride along the famous waterways aboard a traditional mokoro and camp in the heart of the Okavango
- Chobe National Park - enjoy a river cruise in the national park and look out for large herds of elephants
- Panorama Route - drive along the iconic scenic road and admire the view at numerous points including Gods Window
- Johannesburg - end your safari in the South African metropolis and opt to extend your stay to explore the city

- Palapye - camp at the small Botswanan town, which is a popular stop over for travellers on their way to South Africa

#### What's Included

- 10 breakfasts, 9 lunches and 9 dinners
- 1st night dorm/camping in Victoria Falls and 10 nights camping. Tents and sleeping mats provided
- Arrival transfer from Vic Falls Airport on day 1
- A fully equipped overland truck for transportation and game drives
- Services of 3 person crew (leader, driver, cook)
- Chobe River boat trip
- 2 day/1 night Okavango Delta Excursion (camping)
- All camping fees and appropriate equipment
- Park entry - Victoria Falls NP. Park entry and game drives - Kruger NP
- All road taxes and tolls

#### What's Not Included

- International flights and visas
- Sleeping bag - please bring your own
- Tipping - an entirely personal gesture
- Optional activities

#### Local Payment

\$690pp, paid in USD.

The local payment is a cost per person which needs to be paid in US Dollars cash only.

It is this payment which in part covers the park fees and other inclusions such as meals as detailed under 'what you get'. The local payment also covers your arrival transfer and 1st night's accommodation. Please note that due to exchange rate fluctuations in the US dollar, the local payment amount may be subject to changes. This payment will be collected by your tour leader at the Welcome Meeting on day 1.

### DETAILED ITINERARY

#### Day 1 : Victoria Falls

Saturday. Welcome to Victoria Falls! You will be met in the arrivals hall of Victoria Falls Airport by our representative holding an on the go tours/Africa Travel Company sign and transferred to the campsite. There is a pre-departure meeting at 1700hrs where you will meet your guide and the rest of your group.

#### Overnight - Victoria Falls

#### Day 2 : Victoria Falls

Today is spent relaxing or participating in a myriad of Optional Excursions. Named after the famous World Heritage site and Water Falls, the town of Victoria Falls is situated on the Zambezi River and surrounded by the Victoria Falls National Park. Our campsite is conveniently situated in the centre of town, and within walking distance of the adventure booking agents, restaurants and shops. A 20 minute walk down the main road takes you to the entry point to view the falls, which are situated between Zimbabwe and Zambia. Victoria Falls, or Mosi-oa-Tunya (the

### Falls to Joburg - 12 days

www.onthegotours.com  
 UK 020 7371 1113 info@onthegotours.com  
 AUS 1300 855 684 aus-info@onthegotours.com  
 NZ 0800 44 77 69 CAN 1 866 890 7038  
 USA 1 866 606 2960 SA 0800 990 311

updated on 01-04-2020 12:09:28

This information has been compiled with care and good faith. They give an accurate illustration of the proposed arrangements for this holiday. Circumstances beyond our control such as changes in local conditions, inclement weather or other reasons could force us to make changes to this itinerary. Any costs shown are subject to change, though are an accurate reflection of costs at time of writing. Please also note that visa requirements are subject to change and are the responsibility of the traveller and not that of On The Go Tours.

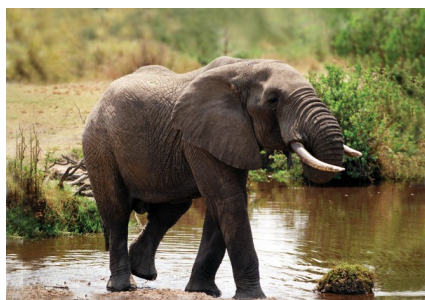
## Falls to Joburg

Smoke that Thunders), was named by David Livingstone on his explorations, and is one of the Seven Natural Wonders of the World. At 1700 m wide and around 100 m high, this is the world's largest sheet of falling water and a memorable sight on any African Safari! After our adventure activities briefing (see price guide at the end of this document for options), the day is spent relaxing at the campsite's swimming pool, viewing the Victoria Falls, or exploring the many sights and delights of this town! White water rafting in the Batoka Gorge is considered to be world class. Besides the excitement of the grade 5 rapids, there are the "floats", where there is time to admire the scenic cliffs and occasional wildlife on the riverbanks.

Optional excursions include horseback safaris, a visit to the crocodile ranch, boat cruises and golf at The Elephant Hills Resort. Adrenalin junkies can bungee from the Victoria Falls Bridge connecting Zimbabwe and Zambia or abseil down the Batoka Gorge - neither activity is for the faint hearted! All year round, flights in fixed wing, micro light and ultra light aircraft or helicopters provide an aerial perspective over this magnificent World Heritage Site. White water rafting on the Zambezi is world class. Beside the excitement of the Grade 5 rapids, there are the "floats," where there is time to admire the scenic cliffs and the occasional wildlife on the riverbanks.

**Included Activity:** Entrance to Victoria Falls  
**Overnight - Victoria Falls**

### Day 3 : Chobe River



Victoria Falls - Kasane (Botswana). After breakfast we cross the border into Botswana and head to Kasane where we set up camp on the banks of the Chobe River. The Chobe River forms a border between Botswana and Namibia and Zambia. Chobe is one of

Botswana's premier game parks, renowned its large elephant herds. This afternoon we enjoy an included boat cruise along the beautiful Chobe River.\* Elephant, hippo and many bird species can be viewed from the boat while we watch another glorious African sunset.

**Included Activity:** Boat cruise on the Chobe River  
**Overnight - Kasane (B, L, D)**

### Day 4 : Nata Region

Kasane - Nata Region. We leave this beautiful part of Botswana behind us this morning as we depart to the lush campsite called Elephant Sands. The drive will take you through a very unpopulated landscape where the donkeys roam freely. Once we have arrived at our campsite you will have the option of partaking in a game drive or a bushwalk. Your crew will provide you with more information.

**Optional Activity:** Game Drive or Bush Walk in the Nata Region  
**Overnight - Nata Region (B, L, D)**

### Days 5-6 : Okavango Delta

Nata Region - Maun - Okavango Delta. Maun is the starting point for the trip into the Delta and it is from here that we can set off to explore the Okavango Delta. Tonight we prepare our provisions and packs for our overnight excursion. We suggest bringing along a smaller day pack on your trip which can be used to pack the supplies needed for this short excursion. Your trip leader will brief you fully on what is needed, and what to expect prior to your trip into the Delta.

On day 6 we take an overnight excursion into the Delta. After an early rise, we pack our expedition vehicle and from Maun we drive north for a couple of hours to reach the mokoro poler's station. The Delta region is studded with many local villages where many families live in a traditional way. Some of the villages are very remote and can only be reached by the traditional mode of transport – the Mokoro. Mokoros are dugout canoes manoeuvred through the waterways by local guides who "pole" them through the reeds. At the Mokoro station, we meet our 'Polers' and pack our supplies before heading out into the waterways. After a couple of hours along

the waterways, we arrive at our mobile tented camp situated in the heart of the Okavango.

On arrival you will meet the local staff who will be your host during your stay. A brief introduction to the camp will show you your dome tent with twin beds and a bush ensuite bathroom – long drop toilet and a bucket shower. Relax in the tent with a cold drink or take a paddle in the Delta in a canoe. The activities at the camp include Mokoro trails and guided walking.

**Included Activity:** Okavango Delta Excursion  
**Overnight - Maun (1) Okavango Delta (1) (B:2, L:2, D:2)**

### Day 7 : Maun



Okavango Delta - Maun. This morning we pack up and set off back to Maun. After our Mokoro ride and vehicle transfer, we arrive back in the afternoon and have the chance to complete our picture of the Okavango Delta by taking an optional scenic flight over the Delta (dependent on weather conditions & availability).  
**Overnight - Maun (B, L, D)**

### Days 8-9 : Blyde River Canyon

Maun - Palapye - Polokwane. Heading out early, we have a fairly long (450kms) drive today to the small town of Palapye, situated about halfway between Francistown and Gaborone. This popular 'stopover' town for those en route to South Africa, is well known for the Morupule Colliery coal mines which supplies Morupule Power Station, Botswana's principal domestic source of electricity.

The following morning we cross into South Africa and stop to sight see at the impressive Blyde River Canyon. Named for the Blyde River that runs through it, the canyon is 26km long, and averages 800m deep and forms the

## Falls to Joburg - 12 days

www.onthegotours.com  
UK 020 7371 1113 info@onthegotours.com  
AUS 1300 855 684 aus-info@onthegotours.com  
NZ 0800 44 77 69 CAN 1 866 890 7038  
USA 1 866 606 2960 SA 0800 990 311

This information has been compiled with care and good faith. They give an accurate illustration of the proposed arrangements for this holiday. Circumstances beyond our control such as changes in local conditions, inclement weather or other reasons could force us to make changes to this itinerary. Any costs shown are subject to change, though are an accurate reflection of costs at time of writing. Please also note that visa requirements are subject to change and are the responsibility of the traveller and not that of On The Go Tours.

## Falls to Joburg

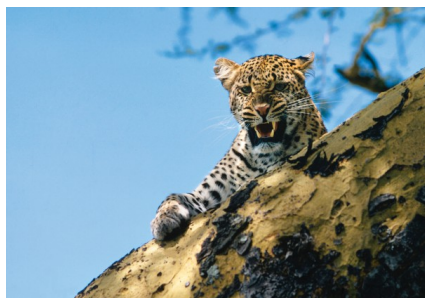
northern edge of the impressive Drakensberg Mountain Range. It is classified as a 'green canyon' due to the uncommon occurrence of vegetation that lines it (uncommon as most canyons are in desert areas and are fairly barren). The main viewpoints along the canyon are the 3 Rondavels, named for the shape of the traditional huts or houses the indigenous people of the area used to live in; and Gods Window that affords a breathtaking view across the canyon and surrounding area.

Please note that there is a small entry fee at each of these attractions that will need to be paid upon arrival. The money generated goes toward the support of the local communities. There are also many locals you sell their local crafts in this area.

**Please note:** If you booked before 1st October 2019 date then the cost of entrance to Blyde River Canyon and God's Window are included. For bookings made after 1st October 2019 the cost of these excursions need to be paid locally.

**Overnight - Polokwane (1) Blydepoort (1)**  
(B:2, L:2, D:2)

### Days 10-11 : Kruger National Park



Polokwane - Nkambeni Camp. Heading through the breathtaking Panorama Route, we stop off at various viewpoints today including scenic God's Window. We pass through the small town of Graskop, and head toward the Kruger National Park and our campsite on the border of the park. Situated just 10km from Kruger's Phabeni Gate, the camp is home to Giraffe, Zebra and Hippo to name but a few. After settling in to our camp, we embark on a nighttime game drive.

The following day we visit the amazing Kruger National Park in search of some of the 146

mammals, 500 bird, 114 reptile, 33 amphibian & 49 fish species that make this park their home. We travel in our truck along the main game viewing routes within the park and stop off at some of the camps along the way.

**Included activity:** Night Game Drive in Kruger on day 10 & Game drives in overland vehicle on day 11 **Overnight - Kruger National Park**  
(B:2, L:2, D:2)

### Day 12 : Johannesburg

Wednesday. Hazyview - Johannesburg. After breakfast, we begin our journey to Kempton Park, Johannesburg, our final destination. Johannesburg is the capital of Gauteng, which is a province in South Africa. On arrival in Johannesburg we unload the truck for the final time, exchange addresses and part ways, having just experienced a trip of a lifetime!

We suggest you extend your stay by a few days to participate in some of the exciting activities available here (see the optional excursions guide for details).

Please note: The drop off point is close to Johannesburg O.R Tambo Airport.(B)

### HOTELS

Highlighted below are some of the hotels which we frequently use on this tour, though we reserve the right to substitute these hotels to ones of a similar standard.

**Please refer to your Tour Voucher for your confirmed arrival hotel and further arrival information.**

### N1 Hotel & Campsite

Located within the town of Victoria Falls, the N1 Hotel offers affordable accommodation, within walking distance to many visitor attractions including the entrance to the mighty Victoria Falls, and consists of en-suite, dorm or camping style accommodation depending on your budget. Guests can enjoy a full English/Irish breakfast at the onsite restaurant or relax by the pool after a day of exploring.



### Victoria Falls Rest Camp

Located a stone's throw away from the Artist village & Elephant Walk Shopping is the Victoria Falls Rest Camp. Offering camping and dorm room accommodation, this camp features a year-round outdoor pool and barbecue facilities. Daily continental or cooked breakfast is served at the in-house restaurant, which also offers a variety of local African dishes. Wi-fi is available and some units feature equipped kitchens.



### About Overlanding

- To get the most out of your overland tour of Africa we highly suggest you read the 'About Overland Safaris' page on our website. It can be found under the Africa travel guide section on our website and is a comprehensive resource for understanding what to expect on an overland tour in Africa
- Overlanding is not considered a luxury holiday but is undoubtedly a lot of fun if camping under the stars and being part of an entirely self-sufficient travelling group is to your liking
- Africa is a vast continent and distances between the highlights we visit can be very far apart, but some early morning starts and late arrivals into camp will ensure that your time is maximised to see as many sights as possible
- We believe that a flexible approach to travel and good sense of humour are essential when undertaking overland safaris, although we trust that any hiccups in the itinerary will be resolved as soon as possible by our trusted partners

### Falls to Joburg - 12 days

www.onthegotours.com  
UK 020 7371 1113 info@onthegotours.com  
AUS 1300 855 684 aus-info@onthegotours.com  
NZ 0800 44 77 69 CAN 1 866 890 7038  
USA 1 866 606 2960 SA 0800 990 311

This information has been compiled with care and good faith. They give an accurate illustration of the proposed arrangements for this holiday. Circumstances beyond our control such as changes in local conditions, inclement weather or other reasons could force us to make changes to this itinerary. Any costs shown are subject to change, though are an accurate reflection of costs at time of writing. Please also note that visa requirements are subject to change and are the responsibility of the traveller and not that of On The Go Tours.

# Falls to Joburg

## Tour Leaders and Groups

Our longest Overland Camping Safari we offer is our Great African Expedition - 57 Days, generally all other safaris we offer are sectors of this larger safari or similarly a fragment of one of the another safari's we offer. As such, on your holiday you may have travellers join you part way through your safari and also there may be travellers who end their safari when you continue on. There may also be times when there is a change of crew and truck (changed to suit group size or local road conditions).

## Please Note

**This tour is operated in conjunction with our trusted partner and you will join travellers from different operators, not solely On The Go.**

This itinerary should be used as a guide only and may vary from day to day depending on road & weather conditions, political situations and group decisions.

All prices & Local Payments are subject to change.

Due to Tourism Laws in some of the countries we visit, there may be a truck and crew change during the trip.

## Family Friendly Departures

Parents with children and teens aged 6 to 17 are welcome on select Falls to Joburg departure dates. Children under 12 get 5% off the trip price but there is no reduction to the local payment.

IMPORTANT, PLEASE NOTE: A South Africa regulation aimed at fighting child trafficking came into effect in June 2015. Please read the 'Travelling with Children to/through South Africa' information in these trip notes for details.

## Who's on tour?

People from all over decide that the back to basics and close-up approach to viewing Africa is for them – from Canada to New Zealand to Singapore and the UK. Generally people are 30-50yrs, easy going and happy to participate. They have a love of camping and as some days are long, don't mind a drive.

Whilst the truck is purpose built and ideal for this style of safari, for those who require more comfort we suggest you opt for one of our lodge safaris.

## Things To Bring

- A rucksack/back pack is the best luggage to bring as your main bag
- A sleeping bag
- For extra comfort, bring a travel pillow
- A towel
- Spare camera batteries/film and dustbag
- Mosquito spray (with active DEET ingredient)
- Your own personal first aid kit
- A torch
- A small daypack for your day-to-day needs.
- Antibacterial wipes
- A photocopy of your passport data pages
- Your Yellow Fever Vaccination Certificate (required from travellers over one, coming from infected areas)
- Your travel insurance policy details
- Hat, sunglasses & sunscreen
- Warm clothing - raincoat, warm hat, socks, gloves etc as across Africa wet/dry and hot/cool climatic periods change invariably.

## Transport on Tour

Our overland vehicles are custom built converted Mercedes Benz or MAN trucks that have seating

space for our passengers and a storage areas for luggage and all trip equipment. The trucks seat

between 27-30 passengers on our camping trips. Most seats are forward facing, though some models have a combination of forward, backward and some inward facing seats with tables. There is no air-conditioning on board, instead vehicles have sliding glass windows, and the seating area is raised providing a great advantage for game viewing and photography. Seats are cushioned and there is storage space for personal items like cameras, snacks and day packs in the seating area.

## Meals on Tour

Meals and menus vary as food is purchased en-route, and is subject to produce that is available

seasonally in the areas we travel through. As we support the local communities along the way, fresh produce is mostly purchased direct from the producer or local grower and therefore has an organic appearance. Our safari cooks are able to offer a wide variety of menus with the ingredients available, even if the produce on offer is not of the same selection as what you may be used to back home. The breakfast spread consists of bread (toast when time allows), spreads and cereals with a hot breakfast every few days. Lunches are mostly prepared en-route with a supply of 'build your own' sandwich ingredients available. Dinners are cooked in the evenings on arrival at the campsite. A wide array of dinner menus are on offer during your safari, consisting of curries, stews, pastas, BBQs and even roasts!

## Participation on Tour

All of our overland safaris are participation trips meaning that all passengers are expected to help out around camp. The crew members running the trip will set up a rota system that will be followed. One day you may be on cleaning duty, the next day you may be on cooking duty and so forth. This is not only to make the trip easier for all involved but also for you as the passengers to get to know one another while on trip.

## Budgeting

Africa is not as cheap as many people believe and we recommend that you budget between US \$50-70 per day for expenses such as drinks, snacks and curios. Budget more if you plan on buying a lot of souvenirs and budget for your optional excursions and visas separately.

## KNOW BEFORE YOU GO

### Passports & Visas

Please ensure that you have at least two blank pages in your passport, plus an additional blank page for each visa/African country you are visiting. If travelling on one of our longer overland safaris we recommend that you have at least 12 blank pages in your passport.

## Falls to Joburg - 12 days

www.onthegotours.com  
 UK 020 7371 1113 info@onthegotours.com  
 AUS 1300 855 684 aus-info@onthegotours.com  
 NZ 0800 44 77 69 CAN 1 866 890 7038  
 USA 1 866 606 2960 SA 0800 990 311

updated on 01-04-2020 12:09:28

This information has been compiled with care and good faith. They give an accurate illustration of the proposed arrangements for this holiday. Circumstances beyond our control such as changes in local conditions, inclement weather or other reasons could force us to make changes to this itinerary. Any costs shown are subject to change, though are an accurate reflection of costs at time of writing. Please also note that visa requirements are subject to change and are the responsibility of the traveller and not that of On The Go Tours.

## Falls to Joburg

Please also note that your passport must be valid for a minimum of six months from the end date of your trip.

Any visa information provided in this document is for general guidance purposes only, visa requirements and fees are subject to change. It is essential that you check current entry requirements with each relevant embassy/consulate prior to departure. Visa procurement is the responsibility of the traveller and not of On The Go.

### Booking Your Flights

When booking your departure flight you should allow time at the end of your African safari for any unexpected delays. We recommend that you book your onward flight no earlier than 24 hours after the end of your safari. In the case of our longer overland camping safaris (22 days or more) we advise against making any firm arrangements for at least 48 hours after the scheduled departure date. Your tour leader can help to arrange post tour accommodation locally upon request.

### Allergies/Likes/Dislikes

Whilst all will done to accommodate everyone, sometimes the choice available is limited as your cook may be making the best of very limited availability, so some flexibility may be required when encountering something you're not particularly fond of or have chosen not to eat as a lifestyle choice. Should you possess allergies which will result in an medical emergency or a life threatening situation then please ensure you speak to your cook on arrival so you can discuss the options available whilst en-route. This will ensure also that they are fully aware of what you can or cannot eat and make adjustments.

### Botswana Country Guide

#### Visa

Please be advised that visa requirements are subject to change and that visa procurement is the responsibility of the traveller and not On The Go Tours, therefore it is essential that you check current visa requirements with the embassy before travel. Please also ensure that your passport is valid for at least 6 months

from your planned date of departure from Africa.

UK, Ireland, Australian, New Zealand, USA, Canadian and South African citizens do not require a visa for entrance into Botswana.

The few countries that do require visas; mostly Eastern European and Asian Nationals, need to obtain them prior to arrival at the border. Visas are not issued at Botswana ports of entry, if you arrive without a visa, immigration officials will refuse you entry to Botswana.

The border crossings we use in Botswana include:

Muhembo (Botswana/Namibia border)  
Kazangula (Botswana/Zimbabwe or Zambia border)  
Groblerberg/Martin's Drift (South Africa/Botswana)

#### Botswana Tourism Levy from 1st June 2017 - postponed until further notice

From the 1st June 2017 a tourism levy of \$30USD is payable when entering Botswana. Payment is taken at the border in US dollars cash, debit or credit card. The Levy is valid for a 30 day period and can be used for multiple entry.

Please note this Levy has been postponed until further notice.

#### Vaccinations

You should seek medical advice before travelling to Botswana from your local health practitioner and ensure that you receive all of the appropriate vaccinations. As a guide Polio, Diphtheria, Hepatitis A and Tetanus is strongly recommended. Rabies may also be recommended.

There is the risk of malaria in certain areas of Botswana so it is very important to check with your doctor before you go, to see whether malarial medication is required for the areas you are visiting. A valid Yellow Fever vaccination certificate is also required if travelling into Botswana and you have previously been in an infected country.

#### Currency & Banking

The currency of Botswana is the Botswana Pulas (BWP) 1 Pula = 100 Thebe. Notes are in denominations of BWP10, 20, 50 and 100.

Coins are in denominations of BWP1, 50, 25, 10, 5, 1.

There are no restrictions on the import of local or foreign currencies, provided they are declared on arrival. Export of local currency is limited to BWP50 and foreign currencies up to the amount declared on arrival. It is easy to change most forms of currency including US\$, GB£, Euros and South African Rand. The best place to change money in Botswana is the bureau de changes as banks charge commission to change either cash or travellers cheques. ATMs are available in all main towns, cities, shopping centres and most petrol stations. MasterCard, Visa, American Express and Diners Club are all widely accepted.

Travellers cheques should be in US Dollars or Pound Sterling to avoid additional exchange rate charges. Proof of identity may be requested in some instances, so it's useful to carry a passport or some form of photo identification. In large cities travellers cheques can incur a high surcharge.

Banking hours: Mon-Fri 0900-1530, Sat 0830-1100.

#### Time & Voltage

Time Zone - Botswana is 2 hours ahead of GMT. Daylight saving time is not observed.

The standard voltage is 220 - 240V. Primary sockets require a 'Type M' - South African, electrical plug which has three thick circular pins. You will need a voltage converter, and plug adapter in order to use U.S. appliances.

#### Climate

Botswana's climate is mainly temperate. During the summer months (October-April) the weather can be very hot with daytime temperatures of around 30 Celsius and higher. The rainy season (typically lasting from January to March) can be hot with temperatures still in the mid 30's and only dropping to around the mid 20's overnight. Winter (May-September) brings a cool change yet is still reasonably warm and mostly

### Falls to Joburg - 12 days

www.onthegotours.com  
UK 020 7371 1113 info@onthegotours.com  
AUS 1300 855 684 aus-info@onthegotours.com  
NZ 0800 44 77 69 CAN 1 866 890 7038  
USA 1 866 606 2960 SA 0800 990 311

updated on 01-04-2020 12:09:28

This information has been compiled with care and good faith. They give an accurate illustration of the proposed arrangements for this holiday. Circumstances beyond our control such as changes in local conditions, inclement weather or other reasons could force us to make changes to this itinerary. Any costs shown are subject to change, though are an accurate reflection of costs at time of writing. Please also note that visa requirements are subject to change and are the responsibility of the traveller and not that of On The Go Tours.

## Falls to Joburg

pleasant with an average temperature of around 25°C. Early mornings and evenings may be cold and frosty especially in the Kalahari region. The amount of rainfall decreases the further you travel west or southwards during the winter and rainy season months.

### Travelling with children in Botswana

The Ministry of Nationality, Immigration and Gender Affairs informs the general public that it has imposed requirements for minors (children under 18) travelling through the country's ports of entry.

Effective from the 1st October 2016 minors travelling through the country's borders will be required to produce certified copies of unabridged birth certificates in addition to their valid passports. In the event that one parent is not travelling with the child, the other parent's affidavit consenting to such travel should be availed. However, an affidavit will not be required if the father's name does not appear on the child's birth certificate."

To summarise the above, should families be travelling with children below the age of 18 they will require the following:

- Valid Passports
- Certified unabridged birth certificates for all minors below the age of 18
- An Affidavit signed by the non-travelling parent should the minor be travelling with one parent

Unfortunately these regulations are very strict therefore we urge all parents travelling to Africa with their children to contact all relevant embassies well prior to departure to ensure they have the correct documentation as if you do not, there is a high chance you will be denied entry.

### South Africa Country Guide

#### Visas

Please be advised that visa requirements are subject to change and that visa procurement is the responsibility of the traveller and not On The Go Tours, therefore it is essential that you check current visa requirements with the embassy before travel. Please also ensure

that your passport is valid for at least 6 months from your planned date of departure from Africa.

UK, Australian, USA and Canadian citizens do not require a tourist visa for South Africa for stays of up to 90 days.

Since 16th January 2017 all New Zealand passport holders have been required to obtain a visa prior to travelling to South Africa.

Nationalities who don't require a visa are able to get an entry stamp at the border on entering South Africa. Please contact your local South African embassy to find out if you require a visa prior to entering SA. If you are subject to visa requirements, you must apply and receive your visa before your departure for South Africa, visas are not issued at South African ports of entry.

The border crossings we use in South Africa include:

Noordoever (South Africa/Namibia border)  
Groblersberg/Martin's Drift (South Africa/Botswana)  
Lebombo (South Africa/Mozambique)  
Oshoek (Swaziland/South Africa)

### Under 18s Travelling To Or Through South Africa

Parents travelling with children (under 18) into or out of South Africa, or transiting in South Africa will be asked to show the child's unabridged (full) birth certificate which lists the child's details and both parents' details. The abridged (short) birth certificate which only lists the child's details won't be accepted. Uncertified copies of birth certificates or copies of the parents/guardians identification will not be accepted. A parental consent affidavit (PCA) must have a certified copy of the parent's/guardian's identification (ie passport) attached to it.

Where only one parent is accompanying a child, parental or legal consent for the child to travel (eg an affidavit from the other parent or – if applicable – a death certificate) is required and there are other requirements for children travelling unaccompanied or with adults who are not their parents.

If you are travelling with children (under 18) it is essential that you contact the South African High Commission or the South African Department of Home Affairs for further information relating to these regulations. If you do not carry the correct documentation you will not be allowed to enter the country. Obtaining the correct paperwork is the responsibility of the traveller and not On The Go Tours.

**Please note: From the 11th November 2019, only a valid passport will be required for foreign minors travelling to South Africa.**

### Health & Vaccinations

You should seek medical advice before travelling to South Africa from your local health practitioner and ensure that all you receive all of the appropriate vaccinations. As a guide tetanus, diphtheria, polio, hepatitis A (for stays over 4 weeks) and hepatitis B (for stays over 3 months) are recommended.

A yellow fever vaccination certificate is required from travellers over one, coming from infected areas.

A low malaria risk occurs in northern parts of Mpumalanga (as well as Kruger National park, northern and northeastern parts of KwaZulu-Natal). If travelling to these regions and/or the countries north of South Africa, where there is a high malaria risk, we strongly recommend that you take anti-malaria medication. Precautionary measures to take to prevent contact with mosquitoes include: insect repellent, cover up at sundown, sleep under a mosquito net and wear long sleeve clothing and long trousers in the evenings.

### Currency

The currency in South Africa is Rand (ZAR; symbol R)

1 Rand = 100 cents. Notes are in denominations of R200, 100, 50, 20 and 10. Coins are in denominations of R5, 2 and 1, and 50, 20, 10 and 5 cents.

Obtaining local currency within South Africa is very easy. ATMs are widely accessible and very reliable and offer the best rates of exchange. International credit cards are

### Falls to Joburg - 12 days

www.onthegotours.com  
UK 020 7371 1113 info@onthegotours.com  
AUS 1300 855 684 aus-info@onthegotours.com  
NZ 0800 44 77 69 CAN 1 866 890 7038  
USA 1 866 606 2960 SA 0800 990 311

updated on 01-04-2020 12:09:28

This information has been compiled with care and good faith. They give an accurate illustration of the proposed arrangements for this holiday. Circumstances beyond our control such as changes in local conditions, inclement weather or other reasons could force us to make changes to this itinerary. Any costs shown are subject to change, though are an accurate reflection of costs at time of writing. Please also note that visa requirements are subject to change and are the responsibility of the traveller and not that of On The Go Tours.

# Falls to Joburg

accepted in almost all shops, restaurants, hotels and game reserves.

Bureau de changes offer a quick and commission free service but are only found in the main centres such as Cape Town and Johannesburg. Travellers cheques can be changed at banks. These should be in US Dollars or Pound Sterling to avoid additional exchange rate charges. Please note that proof of identity may be requested in some instances, so it's useful to carry a passport or some form of photo identification. Travellers cheques can be difficult to exchange and tend to attract high commission fees.

Banking hours: Mon-Fri 0900-1530, Sat 0830-1100.

Rand can be used in Botswana, Namibia and South Africa, so if you are travelling on one of our overland safaris ample money for these three countries can be obtained prior to beginning your trip in Cape Town or Johannesburg. The Rand and Namibian dollar are tied to each other on an equal level and can be used interchangeably in Namibia. The Rand can also be easily converted to Pula in Botswana at good rates.

## Time & Voltage

Time Zone - South Africa is 2 hours ahead of GMT. Daylight saving time is not observed

Standard voltage is 220-230V. Primary sockets require a 'Type M' - South African, electrical plug which has three thick circular pins. You will need a voltage converter, and plug adapter in order to use U.S. appliances.

## Climate

Climatic conditions generally range from Mediterranean in the south western corner of the country to temperate in the interior plateau, and subtropical in the northeast. A small area in the northwest has a desert climate. Most of the country has warm, sunny days and cool nights. Rainfall generally occurs during summer (November-March), although in the southwest, around Cape Town, rainfall occurs in winter (from June-August). Temperatures are influenced by

variations in elevation, terrain, and ocean currents.

## Zimbabwe Country Guide

### Visas

Please be advised that visa requirements are subject to change and that visa procurement is the responsibility of the traveller and not On The Go Tours, therefore it is essential that you check current visa requirements with the embassy before travel. Please also ensure that your passport is valid for at least 6 months from your planned date of departure from Africa.

UK, Ireland, Australian, New Zealand, USA and Canadian passport holders require a visa to enter Zimbabwe, these visas are available at the border for the following costs: Australian, New Zealand and US citizens: US \$30 single/\$45 double entry visa. British and Irish is US\$55 single/\$70 double. Canadians can only obtain a single entry visa at the border for US \$75. South African passport holders can obtain a visa for free. Visas can be brought using post 2003 US\$ notes, GB£ or South African Rand.

### KAZA Visa

Zimbabwe and Zambia have re-introduced the popular, and much-awaited KAZA (Kavango-Zambezi) "Uni-Visa", which allows visitors to stay in either (or both) countries for up to 30 days for a single payment of US\$50.

The UniVisa is available at Harare, Victoria Falls, Lusaka and Livingstone International airports, the Victoria Falls land border (Zimbabwe/Zambia) and the Kazungula land border (Zimbabwe/Zambia/Botswana).

The border crossings we use in Zimbabwe include:

Kazungula (Botswana/Zimbabwe)

### Vaccinations

Seek advice from your doctor or travel clinic at least six weeks prior to departure about what vaccinations you require. Typically the list includes typhoid, tetanus, diphtheria, polio, hepatitis A and B (for stays over 4 weeks).

In Zimbabwe a malarial risk exists from November to June in all areas below 1200m and throughout the year in the Zambezi Valley. We strongly recommend that you take your anti-malaria medication. Other precautionary measures to prevent contact with mosquitoes include: insect repellent, cover up at sundown, sleep under a mosquito net and wear long sleeve clothing and long trousers in the evenings.

Yellow fever: A yellow fever vaccination certificate is required from travellers over one year of age coming from infected areas.

## Currency

The Zimbabwean Dollar was abandoned in April 2009. The country has adopted a multi-currency scheme; the US Dollar and South African Rand can be used for domestic transactions.

Zimbabwe is essentially a cash-only society now with ATMs pretty useless for the foreigner. Credit cards only used in a handful of places, however all major hotels will now accept this payment. We recommend bringing enough cash to cover your stay in Zimbabwe (in either USD or ZAR) especially in the smaller denominations (US\$1-20 and ZAR10 - 200) as there is always a shortage of change and shopkeepers will often refuse larger bills. Please also be aware it is illegal to leave Zimbabwe with over \$1000 (or equivalent) in cash.

Zimbabwe introduced Bond Notes into circulation on 28 November 2017 which will be used alongside the US dollar and other currencies. These Bond Notes will be at a 1:1 parity with the US dollar. However, they are only legal tender within Zimbabwe and as such can only be used there. These Bond notes will be in \$2 and \$5 denominations and there will also be a new \$1 Bond coin.

Banking hours: Mon, Tues, Thurs, Fri - 0800-1500 , Wed 0800-1300 and Sat - 0800-1130. In major towns/cities most banks have an ATM. American Express, Diners Club and Visa cards are widely accepted. Major foreign currencies can be exchanged at bureaux de change and banks at the official

## Falls to Joburg - 12 days

www.onthegotours.com  
 UK 020 7371 1113 info@onthegotours.com  
 AUS 1300 855 684 aus-info@onthegotours.com  
 NZ 0800 44 77 69 CAN 1 866 890 7038  
 USA 1 866 606 2960 SA 0800 990 311

This information has been compiled with care and good faith. They give an accurate illustration of the proposed arrangements for this holiday. Circumstances beyond our control such as changes in local conditions, inclement weather or other reasons could force us to make changes to this itinerary. Any costs shown are subject to change, though are an accurate reflection of costs at time of writing. Please also note that visa requirements are subject to change and are the responsibility of the traveller and not that of On The Go Tours.

## Falls to Joburg

exchange rate. Please also be aware it is illegal to leave Zimbabwe with over \$1000 (or equivalent). As of June 2016 it is becoming increasingly difficult to withdraw money from ATMs in Zimbabwe. There is a cash limit of \$500 per day - however a lot of banks are not replenishing the ATMs. It is strongly advised that you bring enough money with you before you enter Zimbabwe and don't rely on getting any whilst there.

Travellers cheques are accepted at banks, these should be in US Dollars or Pound Sterling to avoid additional exchange rate charges. Most banks will want to see your passport and proof of purchase receipt before cashing your travellers cheques. Please Note: Travellers cheques can be difficult to cash so do not rely upon them as your sole source of funds.

### Time & Voltage

Standard voltage is 220-240V. Primary sockets require a 'Type G' - British plug, or 'Type D' - old English plug or Indian plug. You will need a voltage converter and plug adapter in order to use U.S. appliances.

Zimbabwe is 2 hours ahead of GMT. Daylight saving time is not observed.

### Climate

Although located in the tropics, temperate conditions prevail all year round in Zimbabwe as the climate is moderated by altitude and the inland position of the country.

Zimbabwe has a rainy season from November/December to March, during this time days are hot and sunny with possible afternoon thunderstorms. By April and May most of the rain is gone, skies are clear and days are sunny and warm. Night time temperatures drop dramatically between June and August although daytime temperatures remain pleasantly warm. Late August sees the start of the hot and dry season which continues until October.

### Zambian Airport Departure Tax

NOTES FOR THOSE FLYING OUT OF LIVINGSTONE AIRPORT IN ZAMBIA

An airport departure tax is in place for all flights departing from Zambian airports. It will no longer be included on the ticket and will now be collected in Zambian Kwacha cash direct from the passenger. The amount payable is currently K28,000 for Domestic Flights and K56,000 for International Flights and is payable on departure from all Zambian airports. Passengers need to have ZMK cash available for this tax. Please note, departure taxes are subject to change.

### OPTIONAL ACTIVITIES

We offer a number of locally operated optional activities and excursions on each of our expeditions. We feel that offering optional excursions affords a greater degree of flexibility, independence and choice to our travellers. To help you budget, below is a selection of optional excursions available on this trip.

#### Please note the following:

All prices are in US Dollars and are subject to change. Where activities occur away from your base, there may be an additional transfer cost. Make sure you have \$US dollars with you before you travel to Africa as it is notoriously difficult to get them here.

Victoria Falls activities (if applicable) - must be paid for in US\$ cash (GBP & ZAR also accepted at a lower rate).

Gorilla Trekking (if applicable) - the price varies dependant on where gorilla trek takes place ie Uganda, DRC or Rwanda.

We offer camping excursions in the Serengeti/ Ngorongoro Crater and Okavango Delta.

All optional excursions are offered by 3rd parties and independently of On The Go Tours. They are undertaken at your own risk and On The Go Tours take no responsibility for personal loss/injury caused.

#### South Africa

Blyde River entry US \$ 3

#### Zimbabwe

Bungee Jump (111m) US \$130

Helicopter Over The Falls 15 mins US \$165

Microlight Over The Falls 15 mins US \$180

Rafting & Boarding Combo Low Water (Excl USD10 NP Fee) US \$190

Rafting On The Zambezi Full Day US \$150

### Falls to Joburg - 12 days

www.onthegotours.com  
 UK 020 7371 1113 info@onthegotours.com  
 AUS 1300 855 684 aus-info@onthegotours.com  
 NZ 0800 44 77 69 CAN 1 866 890 7038  
 USA 1 866 606 2960 SA 0800 990 311

This information has been compiled with care and good faith. They give an accurate illustration of the proposed arrangements for this holiday. Circumstances beyond our control such as changes in local conditions, inclement weather or other reasons could force us to make changes to this itinerary. Any costs shown are subject to change, though are an accurate reflection of costs at time of writing. Please also note that visa requirements are subject to change and are the responsibility of the traveller and not that of On The Go Tours.