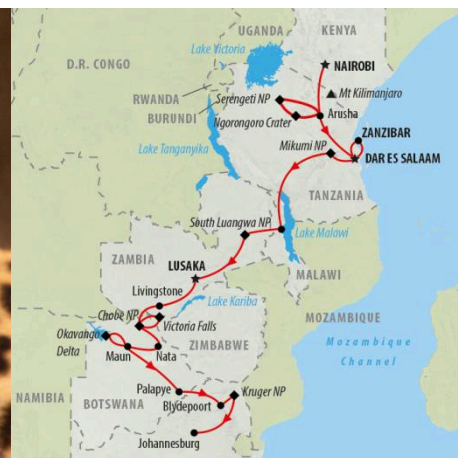
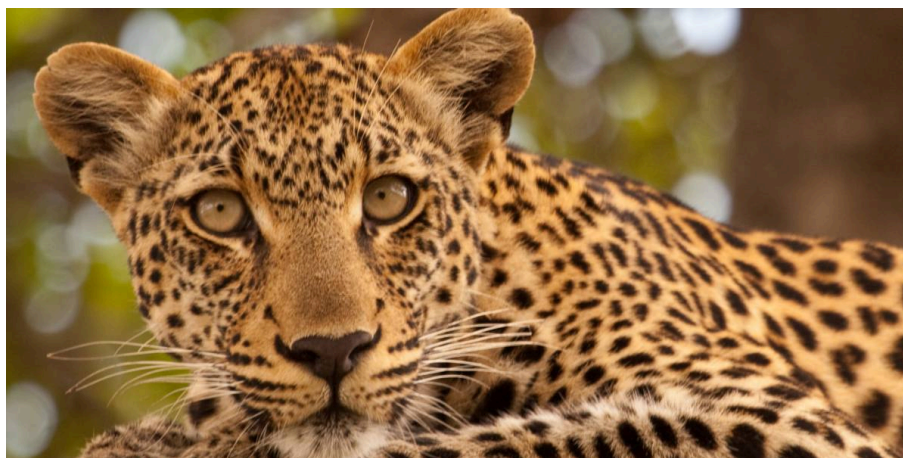


Kenya to Kruger

33 days | Nairobi to Johannesburg



Enjoy a real African adventure, from Nairobi to Johannesburg. Check out some of Africa's greatest game parks, idle about on the tropical island of Zanzibar, relax on the shores of Lake Malawi and enjoy the rush at Victoria Falls.

HIGHLIGHTS AND INCLUSIONS

Trip Highlights

- **Kenya** - begin your African adventure in the vibrant Kenya capital, and head out to explore independently
- **Tanzania** - spot all of Africa's Big Five as you explore the world famous game reserves of the Serengeti and UNESCO-listed Ngorongoro Crater
- **Zanzibar** - unwind on the pristine beaches, explore historic Stone Town and opt for a sunset dhow cruise or visit to a spice plantation
- **Malawi** - spend three days travelling along the western edge of Lake Malawi, which takes up one third of the country
- **Zambia** - spot iconic wildlife on safari in South Luangwa National Park and admire the Zambian side of the thundering Victoria Falls in Livingstone
- **Botswana** - camp out in Chobe National Park, cruise on the Chobe River and

explore the Okavango Delta aboard mokoro canoes

- **Zimbabwe** - marvel at the impressive Victoria Falls from the Zimbabwean side and join optional activities including bungee jumping and rafting on the Zambezi
- **South Africa** - enjoy amazing views of the Blyde River Canyon, search for lions, elephants and more in Kruger National Park, and finish your journey in Johannesburg

What's Included

- Arrival transfer from Nairobi Airport on day 1
- 1st night dormitory accommodation at Kenya Comfort Hotel and 28 nights camping. Tents and sleeping mats provided
- A fully equipped overland truck for transportation and game drives
- Services of 3 person crew (leader, driver, cook)
- All camping fees and appropriate equipment
- 27 breakfasts, 25 lunches and 25 dinners
- 3 night Zanzibar Excursion including ferry transfer, accommodation, Spice Tour and Dhow Sunset Cruise
- Park entry and game drive in Chobe NP, Ngorongoro NP, Serengeti NP, South Luangwa and Kruger NP
- All road taxes and tolls

- Chobe River Boat Cruise

What's Not Included

- International flights and visas
- Sleeping bag - please bring your own
- Tipping - an entirely personal gesture
- Optional activities

Local Payment

\$2090pp, paid in USD

The local payment is a cost per person which needs to be paid in US Dollars cash only. It is this payment which in part covers the park fees and other inclusions such as meals as detailed under 'what you get'. The local payment also covers your arrival transfer and 1st night's accommodation. Please note that due to exchange rate fluctuations in the US dollar, the local payment amount may be subject to changes. This payment will be collected by your tour leader at the Welcome Meeting on day 1.

DETAILED ITINERARY

Day 1 : Nairobi

Saturday. Welcome to Nairobi! You will be met in Nairobi Airport arrivals hall by our representative holding an On The Go tours/ Africa Travel Company sign and transferred to the Kenya Comfort Hotel. Tonight you will stay in shared dorms. Today there is a pre departure meeting at 17:00. **Overnight - Nairobi**

Kenya to Kruger - 33 days

www.onthegotours.com
 UK 020 7371 1113 info@onthegotours.com
 AUS 1300 855 684 aus-info@onthegotours.com
 NZ 0800 44 77 69 CAN 1 866 890 7038
 USA 1 866 606 2960 SA 0800 990 311

This information has been compiled with care and good faith. They give an accurate illustration of the proposed arrangements for this holiday. Circumstances beyond our control such as changes in local conditions, inclement weather or other reasons could force us to make changes to this itinerary. Any costs shown are subject to change, though are an accurate reflection of costs at time of writing. Please also note that visa requirements are subject to change and are the responsibility of the traveller and not that of On The Go Tours.

Kenya to Kruger

Days 2-5 : Serengeti & Ngorongoro



Nairobi - Arusha (Tanzania). Leaving Nairobi we travel south, crossing the border into Tanzania at Namanga. Staying in a lovely campsite in Meserani on the outskirts of Arusha, before heading out on our Serengeti and Ngorongoro Crater excursion tomorrow.

The following morning we visit the Meserani Reptile Park and Masai Cultural Museum. A few minutes' walk from the campsite is a gallery selling the bright and iconic Tinga Tinga paintings. Alternatively, the town of Arusha is nearby to explore. After enjoying lunch at our camp against the backdrop of Mount Meru we meet our Tanzanian guides and transfer into locally operated 4WD vehicles. These vehicles have been adapted for safari use and allow excellent viewing and photographic opportunities through the opening roof hatches.

Leaving our camp, we travel via the Masai town of Mtu Wa Mbu (Mosquito River) that lies adjacent to the Lake Manyara National Park and then up the Rift Valley Escarpment to the higher lying village of Karatu. Karatu offers magnificent views over the surrounding hills and has many well-established wheat farms that add to the picturesque panoramas. Tonight, we spend the evening at a very pleasant campsite in Karatu (campsite has ablution facilities). The following morning we depart early for the Ngorongoro Conservation area and head into the wildlife rich Ngorongoro Crater. This World Heritage Site boasts some of the best game viewing in Africa – including the elusive Black Rhino.

After our game drive in the Crater, we continue down the Crater rim and past the 'Cradle of Mankind' on our way to the

Serengeti National Park. We cross the vast plains as we game drive through the southern and central areas in the park. Tonight we bush camp (no ablutions) in the wild surrounded by the sounds of the African wilderness. In the morning, we head off for another game drive and explore the landscape in search of the resident wildlife. With some luck, we may see some of Africa's 'Big 5'!

After our morning drive, we head back across the plains and the lush Crater rim to our truck at Arusha, where we spend the evening musing over our thrilling wildlife experience.

Included Activity: Serengeti & Ngorongoro excursion. **Overnight - Arusha (1), Karatu (1), Serengeti (1), Arusha (1)** (B:3, L:4, D:4)

Day 6 : Pangani

Arusha - Pangani. Today we head to Arusha in the morning to stock up on supplies before continuing on towards Dar es Salaam. On the way we drive through the town of Moshi situated at the magnificent Mount Kilimanjaro – Africa's highest mountain. Moshi is the base for Mount Kilimanjaro climbing expeditions, and weather permitting; we may even catch a glimpse of this magical mountain's snowy summit - a photo opportunity not to be missed! We pass through vast sisal plantations surrounded by The Usambara and Pare Mountain ranges, before reaching our lovely campsite nestled between these mountains, midway between Arusha and Dar es Salaam.

Overnight - Pangani (B, L, D)

Day 7 : Dar es Salaam

Pangani - Dar es Salaam. Today we continue on to Dar es Salaam. Travelling through lush scenery and palm trees, we near the warm Indian Ocean. Today's drive time is extended due to the heavier amount of traffic heading in to the city, but the sights and sounds of Dar's vibrant outer suburbs are sure to keep you entertained. Look out for the colourful shopfronts with their sometimes humorous 'catch phrases'. On arrival in Dar es Salaam we make our way to our lovely seaside campsite and prepare for our departure to Zanzibar the next morning. **Overnight - Dar es Salaam** (B, L, D)

Days 8-10 : Zanzibar



Dar es Salaam - Zanzibar. A ferry from Dar es Salaam takes us to the "Spice Island," where we spend the next 3 nights. Zanzibar is steeped in history and was one of the major starting points for most East African explorers in their quest for new lands. New passengers may join us to replace those that'll leave us at the end of our excursion to Zanzibar.

Whilst in Zanzibar you'll stay at the Safari Lodge or similar in Stone Town and the 2nd and 3rd night at either Sunset Bungalows or Amaan Bungalows on Nungwe Beach.

History aside, Zanzibar offers a wealth of experiences for the visitor. Today the quiet streets of the old Stone Town still retain their Arabic influence, from the Medina-like shops to the palaces of the Sultans, who founded their vast empires on the spoils of the slave and ivory trade. The island is famous for its spices and an excursion around a spice plantation is always a fascinating experience. Other options include a trip to the beautiful beaches and giant tortoises of Prison Island, a full day scuba dive in Nungwe or a fishing trip in a traditional dhow. Mopeds are available for hire if you'd like to explore the more remote areas of the island. Zanzibar is a seafood lover's paradise. Numerous restaurants offer a great variety of the freshest catch from the ocean - crayfish being a popular speciality. Alternatively, mingle with the locals for dinner at the Forodhani Gardens seafront market, where delicious, inexpensive seafood is on offer.

Included Activity: Zanzibar excursion, Spice Tour & Dhow cruise excursion.

PLEASE NOTE: Meals are for your own account whilst on Zanzibar. The Trip Leader joins you while meals can be enjoyed from a

Kenya to Kruger - 33 days

www.onthegotours.com
 UK 020 7371 1113 info@onthegotours.com
 AUS 1300 855 684 aus-info@onthegotours.com
 NZ 0800 44 77 69 CAN 1 866 890 7038
 USA 1 866 606 2960 SA 0800 990 311

This information has been compiled with care and good faith. They give an accurate illustration of the proposed arrangements for this holiday. Circumstances beyond our control such as changes in local conditions, inclement weather or other reasons could force us to make changes to this itinerary. Any costs shown are subject to change, though are an accurate reflection of costs at time of writing. Please also note that visa requirements are subject to change and are the responsibility of the traveller and not that of On The Go Tours.

Kenya to Kruger

wide selection of restaurants. There are also a wide variety of optional excursions on offer, please see the price guide at the end of this document for more details.

PLEASE NOTE: New legislation prohibits the taking of photographs during the Zanzibar ferry ride. Spot fines can be issued, if legislation is not obeyed. **Overnight - Zanzibar (B:1)**

Day 11 : Mikumi

Zanzibar - Mikumi. Leaving Zanzibar in the morning, we return to the mainland and head west, passing through the Mikumi National Park where it is possible to view a range of wildlife from the roadside, totally impervious to the passing traffic. We will stop in the town of Mikumi for our overnight stay. Arrival to camp is usually in the late afternoon, or early evening. **Overnight - Mikumi (D)**

Day 12 : Iringa

Mikumi - Iringa. Departing early this morning we continue towards Iringa where we spend the night in a beautiful rustic campsite famous for its Amarula Hot Chocolates and its steamy showers! Be sure to keep a good book, music and a pack of cards handy as we are covering around 200 km's today.

Overnight - Iringa (B, L, D)

Days 13-15 : Lake Malawi

Iringa - Lake Malawi (Malawi). Depart Iringa at 6am, we wind our way through the beauty of the Tukuluyu tea and banana plantations, we head towards Malawi entering the 'Warm Heart of Africa' through the border post at Songwe. For day 13, keep a good book, music and a pack of cards handy as we are covering around 500 km's today (with border formality's) and will arrive this evening at approx. 8pm.

Malawi is a landlocked country with 20% of its total area made up of beautiful Lake Malawi. We travel the length of the western side of the lake, stopping off at various bays and inlets over the next 3 days.

Spend the days learning the game of bao from the locals, scour the markets for a bargain or simply relax on the pristine beaches. Malawi's temperate climate allows

for swimming in the clear blue fresh-water lake all year round. Explore the beautiful shore where you'll happen upon the local fishermen sorting their catch. Traditional fishing techniques are still practiced and to appreciate their boating skills, try to paddle a dugout canoe yourself! At night you'll see the 'fairy' lights of the fishermen out on the lake. The various beachside campsites along Lake Malawi's shores offer many optional Excursions including a variety of water sports, horseback rides and a visit to the local village and school (see pricing guide at the end of these Trip Notes).

Overnight - Lake Malawi (B:3, L:3, D:3)

Days 16-18 : South Luangwa National Park

South Luangwa - Lusaka Area. On day 16 we cross the border into Zambia before heading towards South Luangwa National Park. This breath taking park is situated on the Luangwa River in the Eastern part of Zambia, and it is the southernmost of three national parks in this region. South Luangwa was founded in 1938 as a game reserve, 1972 was the year it was declared as a national park, and today it covers over 9000 kilometres squared. Animals such as Giraffe, buffalo and Elephants can be found in abundance. The Luangwa river is home to many a hippo and croc.

Leaving the park on day 18 we make our way down south. As we drive, we pass through a few of the villages and towns of Zambia along the way. Prosperous during the copper boom in the 60's, Zambia was able to build infrastructure at the main mining and farming communities. After the fall of the copper industry, the country was left virtually bankrupt and existing infrastructure was left to fall to ruin. Due to foreign investment and a rise in the mining industry, Zambia is today once again starting to prosper.

Included Activity: Game drives through South Luangwa National Park in overlanding vehicle

Overnight - South Luangwa National Park (2) Lusaka Area (1) (B:3, L:3, D:3)

Day 19 : Livingstone

Lusaka Area - Livingstone. Heading further south, we journey through the southern

Zambian towns mostly supporting local agriculture and farming on our way to Livingstone. The Victoria Falls or Mosi-oa-Tunya (the Smoke that Thunders) is one of the Seven Natural Wonders of the World and it's not difficult to see why. At 1700 m wide and around 100 m high, this is the world's largest sheet of falling water and a memorable sight on any African Safari! The Falls can be viewed from the Mosi-oa-Tunya National Park, Zambia - a fantastic photo opportunity. Tonight we have the option of enjoying a sunset dinner cruise on the mighty Zambezi.

Overnight - Livingstone (B, L, D)

Day 20 : Chobe National Park



Livingstone - Kasane (Botswana) - Chobe. We leave Zambia and cross the border into Botswana at the Kazangula Ferry. Once we've completed the border formalities, we continue to the town of Kasane, situated on the banks of the Chobe River. The Chobe River forms a border between Botswana and Namibia and Zambia and is the main water source to the Chobe National Park.

Later, we leave for our Chobe National Park Overnight Mobile excursion – an overnight experience in the wilds of the Chobe National park. Chobe is one of Botswana's premier game parks, renowned for its large elephant herds. Spend the afternoon in search of wildlife while we game drive to our camp within the park where we spend the evening surrounded by the night-time noises of the local wildlife. Look out for the rare Sable and Roan Antelope on your game drive, with their majestic backward slanting horns, or try keep a count of the Lilac Breasted Roller's that swoop by!

Please note: Should we not be able to stay in Chobe National Park due to lack of availability at the bush camp, this excursion will be

Kenya to Kruger - 33 days

www.onthegotours.com
 UK 020 7371 1113 info@onthegotours.com
 AUS 1300 855 684 aus-info@onthegotours.com
 NZ 0800 44 77 69 CAN 1 866 890 7038
 USA 1 866 606 2960 SA 0800 990 311

This information has been compiled with care and good faith. They give an accurate illustration of the proposed arrangements for this holiday. Circumstances beyond our control such as changes in local conditions, inclement weather or other reasons could force us to make changes to this itinerary. Any costs shown are subject to change, though are an accurate reflection of costs at time of writing. Please also note that visa requirements are subject to change and are the responsibility of the traveller and not that of On The Go Tours.

Kenya to Kruger

replaced with an overnight trip in the bushveld of the Lesoma Valley which is situated in the Kasane Forest Reserve adjacent to the Chobe NP and the Matsetsi Game area of Zimbabwe. Lesoma is equally rich in wildlife and affords a similar experience to the above.

Included Activity: Chobe National Park overnight excursion **Overnight - Chobe National Park** (B, L, D)

Day 21 : Victoria Falls

Chobe - Victoria Falls (Zimbabwe). After our night in the bush, we head out early to continue our search for wildlife, before packing up the camp and heading back to Kasane. Once we have returned to camp, we get back on our truck and continue to the border of Zimbabwe. Once we've completed border formalities, we have a short drive to the nearby Victoria Falls. Named after the famous World Heritage site and Water Falls, the town of Victoria Falls is situated on the Zambezi River and surrounded by the Victoria Falls National Park. Our campsite is conveniently situated in the centre of town, and within walking distance of the adventure booking agents, restaurants and shops. A 20 minute walk down the main road takes you to the entry point to view the falls, which are situated between Zimbabwe and Zambia.

After our adventure activities briefing (see optional excursions guide at the end of these Trip Notes), the afternoon is spent relaxing at the campsite's swimming pool, viewing the Victoria Falls, or exploring the many sights and delights of this town!

Included Activity: Entrance to Victoria Falls **Overnight - Victoria Falls** (L)

Days 22-23 : Victoria Falls



The next 2 days are spent relaxing or participating in a myriad of optional excursions. Some of our fellow passengers will leave us in Vic Falls, to be replaced by new passengers joining us for the next leg of our trek.

Optional excursions include horseback safaris, a visit to the crocodile ranch, boat cruises and golf at The Elephant Hills Resort. Adrenalin junkies can bungee from the Victoria Falls Bridge connecting Zimbabwe and Zambia or abseil down the Batoka Gorge - neither activity is for the faint hearted! All year round, flights in fixed wing, micro light and ultra light aircraft or helicopters provide an aerial perspective over this magnificent World Heritage Site. White water rafting on the Zambezi is world class. Beside the excitement of the Grade 5 rapids, there are the "floats," where there is time to admire the scenic cliffs and the occasional wildlife on the riverbanks.

Overnight - Victoria Falls (B:2)

Day 24 : Chobe River Cruise

Victoria Falls - Kasane (Botswana). After breakfast we cross the border into Botswana and head to Kasane where we set up camp on the banks of the Chobe River. This afternoon we have the option to take a boat cruise along the beautiful Chobe River. Elephant, hippo and many bird species can be viewed from the boat while we watch another glorious African sunset.

Optional Activity: Chobe river cruise **Overnight - Kasane** (B, L, D)

Day 25 : Maun

Kasane - Nata Region. We leave this beautiful part of Botswana behind us this morning as we depart to the lush campsite called Elephant Sands. The drive will take you through a very unpopulated landscape where the donkeys roam freely. Once we have arrived at our campsite you will have the option of partaking in a game drive or a bushwalk. Your crew will provide you with more information.

Optional Activity: Game drive/ Bush Walk in the Nata Region **Overnight - Nata Region** (B, L, D)

Days 26-27 : Okavango Delta



Maun - Okavango Delta. The Delta is a huge expanse of water, which has travelled from the Angolan highlands, spreading out to form the largest inland delta in the world. Studded with exotic islands, The Delta is renowned for its incredible variety of bird life and animals and is unique to Southern Africa.

Here we take the 2 Day / 1 Night Drive in Mokoro Excursion into the Delta. After an early rise, we pack our expedition vehicle and from Maun we drive north for a couple of hours to reach the mokoro poler's station. The Delta region is studded with many local villages where many families live in a traditional way. Some of the villages are very remote and can only be reached by the traditional mode of transport - the Mokoro. Mokoros are dugout canoes manoeuvred through the waterways by local guides who "pole" them through the reeds. At the Mokoro station, we meet our 'polers' and pack our supplies before heading out into the waterways. After a couple of hours along the waterways, our guides find us a place to camp, and later in the afternoon we set off on an afternoon game walk, allowing us to experience The Delta wilderness. The camp is situated in an open wilderness area with no ablution facilities.

Enjoy rest, relaxation and Delta experiences on day 27, when we have the opportunity to partake in a number of activities including swimming, game walks, mokoro cruises and even a chance to try our hands at poling our own mokoro! There is also ample time to relax and rest during the hotter hours of the day, so challenge your new friends to a game of cards, or chat with your guides about their culture and lifestyle, or simply lie back and enjoy the sounds of the surrounding wilderness.

Kenya to Kruger - 33 days

www.onthegotours.com
 UK 020 7371 1113 info@onthegotours.com
 AUS 1300 855 684 aus-info@onthegotours.com
 NZ 0800 44 77 69 CAN 1 866 890 7038
 USA 1 866 606 2960 SA 0800 990 311

This information has been compiled with care and good faith. They give an accurate illustration of the proposed arrangements for this holiday. Circumstances beyond our control such as changes in local conditions, inclement weather or other reasons could force us to make changes to this itinerary. Any costs shown are subject to change, though are an accurate reflection of costs at time of writing. Please also note that visa requirements are subject to change and are the responsibility of the traveller and not that of On The Go Tours.

Kenya to Kruger

Included Activity: 2 day/1 night Okavango Delta excursion. **Overnight - Okavango Delta** (B:2, L:2, D:2)

Day 28 : Maun

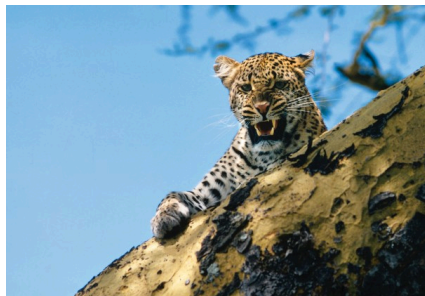
Okavango Delta - Maun. This morning we pack up and set off back to Maun. After our Mokoro ride and vehicle transfer, we arrive at Maun in the afternoon and there's time to complete our Okavango experience by taking an optional scenic flight over the Delta (dependent on weather conditions & availability). **Overnight - Maun** (B, L, D)

Day 29 : Palapye

Maun - Palapye. Heading out early, we have a fairly long (450kms) drive today to the small town of Palapye, situated about halfway between Francistown and Gaborone (Botswana's capital). This popular 'stopover' town for those en route to South Africa, is well known for the Morupule Colliery coal mines which supplies Morupule Power Station, Botswana's principal domestic source of electricity.

Overnight - Palapye (B, L, D)

Day 30 : Blyde River Canyon



Palapye - Blydepoort (South Africa). This morning we cross into South Africa, and sightsee at the impressive Blyde River Canyon. Named for the Blyde River that runs through it, the canyon is 26km long, and averages 800m deep and forms the northern edge of the impressive Drakensberg Mountain Range. It is classified as a 'green canyon' due to the uncommon occurrence of vegetation that lines it (uncommon as most canyons are in desert areas and are fairly barren). The main viewpoints along the canyon are the 3 Rondavels, named for the shape of the traditional huts or houses the indigenous people of the area used to live in;

and Gods Window that affords a breathtaking view across the canyon and surrounding area.

Please note: If you booked before 1st October 2019 date then the cost of entrance to Blyde River Canyon and God's Window are included. For bookings made after 1st October 2019 the cost of these excursions need to be paid locally. **Overnight - Polokwane** (B, L, D)

Days 31-32 : Kruger National Park

Heading through the breathtaking Panorama Route, we stop off at various viewpoints today including scenic God's Window. We pass through the small town of Graskop, and head toward the Kruger National Park and our campsite located in the park.

The next day we visit the amazing Kruger National Park in search of some of the 146 mammals, 500 bird, 114 reptile, 33 amphibian & 49 fish species that make this park their home. We travel in our truck along the main game viewing routes within the park and stop off at some of the camps along the way. For those who wish to upgrade to an open vehicle game drive, this can be arranged with the trip leader at an additional cost.

Included activity: Night Game Drive in Kruger on day 31 & Game drives on day 32 **Overnight - Hazyview** (B:2, L:2, D:2)

Day 33 : Johannesburg

Wednesday. Hazyview - Johannesburg. After breakfast, we begin our journey to our final destination; Egoli the place of gold (Johannesburg). Johannesburg is the capital of Gauteng, which is a province in South Africa. On arrival in Kempton Park Johannesburg we unload the truck for the final time, exchange addresses and part ways, having just experienced a trip of a lifetime!

We suggest you extend your stay by a few days to partake in some of the activities available in Johannesburg. Post tour accommodation can be booked locally, please speak to your tour leader for more information.

Please note: The drop off point is close to Johannesburg O.R Tambo Airport.

(B)

HOTELS

Highlighted below are some of the hotels which we frequently use on this tour, though we reserve the right to substitute these hotels to ones of a similar standard.

Please refer to your Tour Voucher for your confirmed arrival hotel and further arrival information.

Kenya Comfort Hotel

Comfortable dormitory accommodation in central Nairobi (upgrades available on request). The Kenya Comfort Hotel also features an outdoor pool, restaurant serving a good array of local and international dishes as well as a fully stocked bar - perfect for relaxing before or after your epic overland adventure.



Kipepeo Village

The Tanzanian bush meets the blue waters of the Indian Ocean at Kipepeo Beach & Village, situated on the south coast of Dar Es Salaam. The campsite is right on the beach itself and is a popular destination for watersports adventures or simple relaxation. Facilities include a beach bar and restaurant. Upgrades are available to the twenty elevated ensuite chalets, built in the bush and decorated in traditional Swahili style, provide a stunning ocean views.



Croc Valley Camp

Croc Valley Camp is located on the banks of the Luangwa River, and provides accommodation ranging from riverfront tents

Kenya to Kruger - 33 days

www.onthegotours.com
 UK 020 7371 1113 info@onthegotours.com
 AUS 1300 855 684 aus-info@onthegotours.com
 NZ 0800 44 77 69 CAN 1 866 890 7038
 USA 1 866 606 2960 SA 0800 990 311

This information has been compiled with care and good faith. They give an accurate illustration of the proposed arrangements for this holiday. Circumstances beyond our control such as changes in local conditions, inclement weather or other reasons could force us to make changes to this itinerary. Any costs shown are subject to change, though are an accurate reflection of costs at time of writing. Please also note that visa requirements are subject to change and are the responsibility of the traveller and not that of On The Go Tours.

Kenya to Kruger

to ensuite chalets, built on stilts to avoid the off-season floods. Watch elephants roam across the campsite, experience a game drive through South Luangwa National Park, or relax with a gin & tonic at the bar. The camp also features a large outdoor pool, kitchen facilities, and daily laundry service.



Shearwater Explorers Village

Situated in the bohemian town of Victoria Falls, and 400m from the Falls themselves, the affordable accommodation at the Shearwater Explorers Village consists of 5 campsites with modern bathroom facilities, and 16 chalets with en-suite showers and A/C. Shearwater operates a range of activities at the Falls, from bungee jumping to river rafting - and when the day is over, guests can wind down with Wi-Fi in the lounge areas, a drink by the pool, or even a back rub in the massage tent.



Delta Rain Bushcamp

This unique campsite is located in the heart of the Okavango Delta, as part of the Delta Rain safari experience. Accommodation consists of dome tents with twin beds, and "bush en-suite" bathrooms with a long-drop toilet and bucket shower. After settling in, guests can relax in the mess tent, partake in game viewing trips, or go on guided walks, while admiring the beauty of this UNESCO World Heritage Site.



About Overlanding

- To get the most out of your overland tour of Africa we highly suggest you read the 'About Overland Safaris' page on our website. It can be found under the Africa travel guide section on our website and is a comprehensive resource for understanding what to expect on an overland tour in Africa
- Overlanding is not considered a luxury holiday but is undoubtedly a lot of fun if camping under the stars and being part of an entirely self-sufficient travelling group is to your liking
- Africa is a vast continent and distances between the highlights we visit can be very far apart, but some early morning starts and late arrivals into camp will ensure that your time is maximised to see as many sights as possible
- We believe that a flexible approach to travel and good sense of humour are essential when undertaking overland safaris, although we trust that any hiccups in the itinerary will be resolved as soon as possible by our trusted partners

Tour Leaders and Groups

Our longest Overland Camping Safari we offer is our Great African Expedition - 57 Days, generally all other safaris we offer are sectors of this larger safari or similarly a fragment of one of the another safari's we offer. As such, on your holiday you may have travellers join you part way through your safari and also there may be travellers who end their safari when you continue on. There may also be times when there is a change of crew and truck (changed to suit group size or local road conditions).

Please Note

This tour is operated in conjunction with our trusted partner and you will join travellers from different operators, not solely On The Go.

This itinerary should be used as a guide only and may vary from day to day depending on road & weather conditions, political situations and group decisions.

All prices & Local Payments are subject to change.

Due to Tourism Laws in some of the countries we visit, there may be a truck and crew change during the trip.

This safari is modular and a portion of this trip may coincide with a family departure which welcomes children aged 6 and over.

Who's on tour?

People from all over decide that the back to basics and close-up approach to viewing Africa is for them – from Canada to New Zealand to Singapore and the UK. Generally people are 30-50yrs, easy going and happy to participate. They have a love of camping and as some days are long, don't mind a drive. Whilst the truck is purpose built and ideal for this style of safari, for those who require more comfort we suggest you opt for one of our lodge safaris.

Things To Bring

- A rucksack/back pack is the best luggage to bring as your main bag
- A sleeping bag
- For extra comfort, bring a travel pillow
- A towel
- Spare camera batteries/film and dustbag
- Mosquito spray (with active DEET ingredient)
- Your own personal first aid kit
- A torch
- A small daypack for your day-to-day needs.
- Antibacterial wipes
- A photocopy of your passport data pages
- Your Yellow Fever Vaccination Certificate
- Your travel insurance policy details
- Hat, sunglasses & sunscreen
- Warm clothing - raincoat, warm hat, socks, gloves etc as across Africa wet/dry and hot/cool climatic periods change invariably.

Budgeting

Africa is not as cheap as many people believe and we recommend that you budget between US \$50-70 per day for expenses such as

Kenya to Kruger - 33 days

www.onthegotours.com
 UK 020 7371 1113 info@onthegotours.com
 AUS 1300 855 684 aus-info@onthegotours.com
 NZ 0800 44 77 69 CAN 1 866 890 7038
 USA 1 866 606 2960 SA 0800 990 311

updated on 28-07-2021 11:15:23

This information has been compiled with care and good faith. They give an accurate illustration of the proposed arrangements for this holiday. Circumstances beyond our control such as changes in local conditions, inclement weather or other reasons could force us to make changes to this itinerary. Any costs shown are subject to change, though are an accurate reflection of costs at time of writing. Please also note that visa requirements are subject to change and are the responsibility of the traveller and not that of On The Go Tours.

Kenya to Kruger

drinks, snacks and curios. Budget more if you plan on buying a lot of souvenirs and budget for your optional excursions and visas separately.

Transport on Tour

Our overland vehicles are custom built converted Mercedes Benz or MAN trucks that have seating space for our passengers and a storage areas for luggage and all trip equipment. The trucks seat between 27-30 passengers on our camping trips. Most seats are forward facing, though some models have a combination of forward, backward and some inward facing seats with tables. There is no air-conditioning on board, instead vehicles have sliding glass windows, and the seating area is raised providing a great advantage for game viewing and photography. Seats are cushioned and there is storage space for personal items like cameras, snacks and day packs in the seating area.

Meals on Tour

Meals and menus vary as food is purchased en-route, and is subject to produce that is available seasonally in the areas we travel through. As we support the local communities along the way, fresh produce is mostly purchased direct from the producer or local grower and therefore has an organic appearance. Our safari cooks are able to offer a wide variety of menus with the ingredients available, even if the produce on offer is not of the same selection as what you may be used to back home. The breakfast spread consists of bread (toast when time allows), spreads and cereals with a hot breakfast every few days. Lunches are mostly prepared en-route with a supply of 'build your own' sandwich ingredients available. Dinners are cooked in the evenings on arrival at the campsite. A wide array of dinner menus are on offer during your safari, consisting of curries, stews, pastas, BBQs and even roasts!

Participation on Tour

All of our overland safaris are participation trips meaning that all passengers are expected to help out around camp. The crew

members running the trip will set up a rota system that will be followed. One day you may be on cleaning duty, the next day you may be on cooking duty and so forth. This is not only to make the trip easier for all involved but also for you as the passengers to get to know one another while on trip.

KNOW BEFORE YOU GO

Passports & visas

Please ensure that you have at least two blank pages in your passport, plus an additional blank page for each visa/African country you are visiting. If travelling on one of our longer overland safaris we recommend that you have at least 12 blank pages in your passport.

Please also note that your passport must be valid for a minimum of six months from the end date of your trip.

Any visa information provided in this document is for general guidance purposes only, visa requirements and fees are subject to change. It is essential that you check current entry requirements with each relevant embassy/consulate prior to departure. Visa procurement is the responsibility of the traveller and not of On The Go.

Booking your flights

When booking your departure flight you should allow time at the end of your African safari for any unexpected delays. We recommend that you book your onward flight no earlier than 24 hours after the end of your safari. In the case of our longer overland camping safaris (22 days or more) we advise against making any firm arrangements for at least 48 hours after the scheduled departure date. Your tour leader can help to arrange post tour accommodation locally upon request.

Allergies/likes/dislikes

Whilst all will be done to accommodate everyone, sometimes the choice available is limited as your cook may be making the best of very limited availability, so some flexibility may be required when encountering something you're not particularly fond of or have chosen not to eat as a lifestyle choice.

Should you possess allergies which will result in a medical emergency or a life threatening situation then please ensure you speak to your cook on arrival so you can discuss the options available whilst en-route. This will ensure also that they are fully aware of what you can or cannot eat and make adjustments.

Botswana Country Guide

Visa

Please be advised that visa requirements are subject to change and that visa procurement is the responsibility of the traveller and not On The Go Tours, therefore it is essential that you check current visa requirements with the embassy before travel. Please also ensure that your passport is valid for at least 6 months from your planned date of departure from Africa.

UK, Ireland, Australian, New Zealand, USA, Canadian and South African citizens do not require a visa for entrance into Botswana.

The few countries that do require visas; mostly Eastern European and Asian Nationals, need to obtain them prior to arrival at the border. Visas are not issued at Botswana ports of entry, if you arrive without a visa, immigration officials will refuse you entry to Botswana.

The border crossings we use in Botswana include:

Muhembo (Botswana/Namibia border)
Kazangula (Botswana/Zimbabwe or Zambia border)
Groblerberg/Martin's Drift (South Africa/Botswana)

Botswana Tourism Levy from 1st June 2017 - postponed until further notice

From the 1st June 2017 a tourism levy of \$30USD is payable when entering Botswana. Payment is taken at the border in US dollars cash, debit or credit card. The Levy is valid for a 30 day period and can be used for multiple entry.

Please note this Levy has been postponed until further notice.

Kenya to Kruger - 33 days

www.onthegotours.com
UK 020 7371 1113 info@onthegotours.com
AUS 1300 855 684 aus-info@onthegotours.com
NZ 0800 44 77 69 CAN 1 866 890 7038
USA 1 866 606 2960 SA 0800 990 311

updated on 28-07-2021 11:15:23

This information has been compiled with care and good faith. They give an accurate illustration of the proposed arrangements for this holiday. Circumstances beyond our control such as changes in local conditions, inclement weather or other reasons could force us to make changes to this itinerary. Any costs shown are subject to change, though are an accurate reflection of costs at time of writing. Please also note that visa requirements are subject to change and are the responsibility of the traveller and not that of On The Go Tours.

Kenya to Kruger

Vaccinations

You should seek medical advice before travelling to Botswana from your local health practitioner and ensure that you receive all of the appropriate vaccinations. As a guide Polio, Diphtheria, Hepatitis A and Tetanus is strongly recommended. Rabies may also be recommended.

There is the risk of malaria in certain areas of Botswana so it is very important to check with your doctor before you go, to see whether malarial medication is required for the areas you are visiting. A valid Yellow Fever vaccination certificate is also required if travelling into Botswana and you have previously been in an infected country.

Currency & Banking

The currency of Botswana is the Botswana Pulas (BWP) 1 Pula = 100 Thebe. Notes are in denominations of BWP10, 20, 50 and 100. Coins are in denominations of BWP1, 50, 25, 10, 5, 1.

There are no restrictions on the import of local or foreign currencies, provided they are declared on arrival. Export of local currency is limited to BWP50 and foreign currencies up to the amount declared on arrival. It is easy to change most forms of currency including US\$, GB£, Euros and South African Rand. The best place to change money in Botswana is the bureau de changes as banks charge commission to change either cash or travellers cheques. ATMs are available in all main towns, cities, shopping centres and most petrol stations. MasterCard, Visa, American Express and Diners Club are all widely accepted.

Travellers cheques should be in US Dollars or Pound Sterling to avoid additional exchange rate charges. Proof of identity may be requested in some instances, so it's useful to carry a passport or some form of photo identification. In large cities travellers cheques can incur a high surcharge.

Banking hours: Mon-Fri 0900-1530, Sat 0830-1100.

Time & Voltage

Time Zone - Botswana is 2 hours ahead of GMT. Daylight saving time is not observed.

The standard voltage is 220 - 240V. Primary sockets require a 'Type M' - South African, electrical plug which has three thick circular pins. You will need a voltage converter, and plug adapter in order to use U.S. appliances.

Climate

Botswana's climate is mainly temperate. During the summer months (October-April) the weather can be very hot with daytime temperatures of around 30 Celsius and higher. The rainy season (typically lasting from January to March) can be hot with temperatures still in the mid 30's and only dropping to around the mid 20's overnight. Winter (May-September) brings a cool change yet is still reasonably warm and mostly pleasant with an average temperature of around 25°C. Early mornings and evenings may be cold and frosty especially in the Kalahari region. The amount of rainfall decreases the further you travel west or southwards during the winter and rainy season months.

Travelling with children in Botswana

The Ministry of Nationality, Immigration and Gender Affairs informs the general public that it has imposed requirements for minors (children under 18) travelling through the country's ports of entry.

Effective from the 1st October 2016 minors travelling through the country's borders will be required to produce certified copies of unabridged birth certificates in addition to their valid passports. In the event that one parent is not travelling with the child, the other parent's affidavit consenting to such travel should be availed. However, an affidavit will not be required if the father's name does not appear on the child's birth certificate."

To summarise the above, should families be travelling with children below the age of 18 they will require the following:

- Valid Passports
- Certified unabridged birth certificates for all minors below the age of 18
- An Affidavit signed by the non-travelling parent should the minor be travelling with one parent

Unfortunately these regulations are very strict therefore we urge all parents travelling to Africa with their children to contact all relevant embassies well prior to departure to ensure they have the correct documentation as if you do not, there is a high chance you will be denied entry.

Kenya Country Guide

Visas

Please be advised that visa requirements are subject to change and that visa procurement is the responsibility of the traveller and not On The Go Tours, therefore it is essential that you check current visa requirements with the embassy before travel. Please also ensure that your passport is valid for at least 6 months from your planned date of departure from Africa.

South African passport holders do not require a visa to visit Kenya for up to 30 days. Most other nationalities, including UK, USA, Canadian, Australian and New Zealand passport holders, do require a visa to enter Kenya.

On 1st July 2015 the government of Kenya introduced an electronic visa application. It is still possible to purchase a visa upon arrival up until 31 August 2015. From 01 September 2015 ALL tourists wishing to visit Kenya need to apply for a visa online at www.ecitizen.go.ke. The visa process can take up to 7 working days. For further details please visit our Kenya visa page -<http://www.onthegotours.com/Kenya/Visas>.

All passengers require an onward/return tickets and sufficient funds for length of intended stay (at least US\$500).

The border crossings we use in Kenya include:

Busia (Kenya/Uganda border)
Namanga (Kenya/Tanzania border)
Isebania (Kenya/Tanzania border)

A Yellow Fever Vaccination Certificate is required for travel to Kenya and if travelling from an infected area it must be presented upon arrival in order to be granted entry. Please also note that if you are travelling

Kenya to Kruger - 33 days

www.onthegotours.com
UK 020 7371 1113 info@onthegotours.com
AUS 1300 855 684 aus-info@onthegotours.com
NZ 0800 44 77 69 CAN 1 866 890 7038
USA 1 866 606 2960 SA 0800 990 311

This information has been compiled with care and good faith. They give an accurate illustration of the proposed arrangements for this holiday. Circumstances beyond our control such as changes in local conditions, inclement weather or other reasons could force us to make changes to this itinerary. Any costs shown are subject to change, though are an accurate reflection of costs at time of writing. Please also note that visa requirements are subject to change and are the responsibility of the traveller and not that of On The Go Tours.

Kenya to Kruger

onward to Uganda and/or Rwanda you will need a Yellow Fever Certificate to produce on arrival in order to be granted entry.

East Africa Tourist Visa

If you are planning on visiting Uganda and/or Rwanda when travelling to Kenya then you can apply for an East Africa tourist visa which will cover all countries. The visa allows multiple entry into these countries and is valid for 90 days. It can be applied for in advance or upon arrival at Nairobi International Airport.

Vaccinations

You should seek medical advice before travelling to Kenya from your local health practitioner and ensure that you receive all of the appropriate vaccinations. As a guide Polio, Diphtheria, Hepatitis A&B and Tetanus is strongly recommended. Rabies and Meningitis are also recommended.

There is the risk of malaria in Kenya so it is very important to check with your doctor before you go, to see whether malarial medication is required for the areas you are visiting. A Yellow Fever Vaccination Certificate is required for travel to Kenya and if travelling from an infected area it must be presented upon arrival in order to be granted entry. Please also note that if you are travelling onward to Uganda and/or Rwanda you will need a Yellow Fever Certificate to produce on arrival in order to be granted entry.

Time & Voltage

Kenya is 3 hours ahead of GMT. Daylight saving time is not observed.

In Kenya the standard voltage is 220-240V. Primary sockets require a 'Type G' - British BS-1363 type, three pin plug. You will need a voltage converter, and plug adapter in order to use U.S. appliances. We recommend packing a universal adapter.

Currency

The currency of Kenya is the Kenyan Shilling (code KES, symbol KSh).

1 KSh = 100 cents. Notes are in denominations of: KSh1,000, 500, 200, 100 and 50.

Coins are in denominations of KSh20, 10 and 5.

Banking hours: Mon-Fri 0900-1500, Sat 0900-1100. You can exchange money in banks or bureau de changes. Be aware that old pre-2010 US\$ banknotes or torn or marked banknotes are difficult to exchange in Africa so make sure you take crisp new notes! In major towns/cities most banks have an ATM. American Express, Diners Club, MasterCard and Visa cards are all widely accepted.

Travellers cheques can be changed at banks, these should be in US Dollars or Pound Sterling to avoid additional exchange rate charges. Most banks will want to see your passport and proof of purchase receipt before cashing your travellers cheques. Please Note: Travellers cheques can be difficult to cash and often have restrictions of about US\$100 a day maximum. They also tend to attract high commission charges, especially when exchanging for hard currency.

Climate

Kenya is an excellent year round destination with a favourable climate and reasonably low rainfall. In general the hottest months are December to March, although the climate varies enormously from place to place. The lowland coastal areas are tropical, with year round high temperatures and humidity, which is at its peak in April and May, although tempered by monsoon winds. The highlands are more temperate with four seasons. Nairobi has a very pleasant climate throughout the year due to its altitude. Near Lake Victoria, the temperatures are much higher and rainfall can be heavy.

Plastic Bag Ban

Effective August 2017: All passengers arriving into Kenya including tourists can possibly face very heavy fines for using plastic bags in any way, shape or form. Using, manufacture or importation of plastic bags, including garbage bags and shopping bags is illegal. Offenders, including tourists, could face very heavy fines. Visitors/Citizens and Residents alike are advised to avoid packing any plastic bags in their suitcases or in carry-on hand luggage before flying to Kenya. Items purchased at the airport before boarding the aircraft should be removed from plastic bags. Please check

hand luggage before disembarking at entry points and any plastic bags should be left in the plane.

Similarly the transparent "zip-lock" plastic bags that some airlines require passengers to use for keeping liquids, cosmetics, toiletries etc separately in hand luggage are also not permitted to be brought and should be removed and left on the plane before disembarking.

Malawi Country Guide

Visas

Please be advised that visa requirements are subject to change and that visa procurement is the responsibility of the traveller and not On The Go Tours, therefore it is essential that you check current visa requirements with the embassy before travel. Please also ensure that your passport is valid for at least 6 months from your planned date of departure from Africa.

As of the 1st October 2015 passport holders of (but not limited to) UK, USA, Canada, Australia and New Zealand will be charged a visa fee at the border into Malawi. The cost is \$50 for a 7 day transit visa and \$75 for a 90 day single entry visa.

Please check with your local Malawi Embassy or High Commission prior to departure.

The border crossings we use in Malawi include:

Machinji (Malawi/Zambia border)
Songwe (Malawi/Tanzania border)

Vaccinations

Seek advice from your doctor or travel clinic at least six weeks prior to departure about what vaccinations you require. Typically the list includes typhoid, tetanus, polio, hepatitis A and B and meningitis.

A malaria risk exists throughout the country, we strongly recommend that you take anti-malaria medication.

Kenya to Kruger - 33 days

www.onthegotours.com
UK 020 7371 1113 info@onthegotours.com
AUS 1300 855 684 aus-info@onthegotours.com
NZ 0800 44 77 69 CAN 1 866 890 7038
USA 1 866 606 2960 SA 0800 990 311

updated on 28-07-2021 11:15:23

This information has been compiled with care and good faith. They give an accurate illustration of the proposed arrangements for this holiday. Circumstances beyond our control such as changes in local conditions, inclement weather or other reasons could force us to make changes to this itinerary. Any costs shown are subject to change, though are an accurate reflection of costs at time of writing. Please also note that visa requirements are subject to change and are the responsibility of the traveller and not that of On The Go Tours.

Kenya to Kruger

A Yellow Fever Vaccination Certificate is required from travellers over one year of age coming from infected areas.

Currency

The currency of Malawi is the Malawian Kwacha (MKW, symbol MK).

1 MKW = 100 tambala.

Notes are in denominations of Mk500, 200, 100, 50, 20, 10 and 5.

Coins are in denominations of Mk1 and 20, 10, 5, 2 and 1 tambala.

On arrival in Lilongwe you will be able to convert money into MKW. The bureau de changes are the easiest place to change money, and US\$ and GB£ are accepted in both cash and travellers cheque format. Travellers cheques attract a commission charge and a lower exchange rate than cash, which is changed with no commission.

If coming south from Tanzania, MKW can be purchased on the border using US\$ cash. ATMs are effectively non-existent for foreign cards in Malawi.

Time & Voltage

Time Zone - Malawi is 2 hours ahead of GMT. Daylight saving time is not observed

Standard voltage is 220-240V. Electrical sockets in Malawi are the "Type G " British BS-1363 type. You will need a voltage converter, and plug adapter in order to use U.S. appliances

Climate

There are three seasons in Malawi. The rainy season extends from November to April, the cool season from May to July and the dry season from August to October. Temperatures and rainfall are greatly influenced by Lake Malawi and altitude, which varies from 37 metres (in the Lower Shire Valley) to 3050 metres (Mount Mulanje). Along the lakeshore, the mean annual temperature is 24°C, and humidity can be high during the rainy season.

Tanzania Country Guide

Plastic Bag Ban

Effective 1st June 2019: All passengers arriving at any Tanzania airport including tourists can possibly face very heavy fines for using plastic bags in any way, shape or form. Using, manufacture or importation of plastic bags, including garbage bags and shopping bags is illegal. Offenders, including tourists, could face very heavy fines.

Visitors/Citizens and Residents alike are advised to avoid packing any plastic bags in their suitcases or in carry-on hand luggage before flying to Tanzania. Items purchased at the airport before boarding the aircraft should be removed from plastic bags. Please check hand luggage before disembarking at entry points and any plastic bags should be left in the plane.

Similarly the transparent "zip-lock" plastic bags that some airlines require passengers to use for keeping liquids, cosmetics, toiletries etc separately in hand luggage are also not permitted to be brought and should be removed and left on the plane before disembarking.

Visas

Please be advised that visa requirements are subject to change and that visa procurement is the responsibility of the traveller and not On The Go Tours, therefore it is essential that you check current visa requirements with the embassy before travel. Please also ensure that your passport is valid for at least 6 months from your planned date of departure from Africa.

UK, Irish, Australian, New Zealand, USA, Canadian and RSA citizens require a visa for Tanzania. A single entry visas can be obtained by most nationalities upon arrival at Dar es Salaam, Kilimanjaro and Zanzibar Airport or at Namanga border crossing point, between Tanzania and Kenya. The current visa cost is US\$50 for all nationalities, which can be paid in US\$, GB£ or Euro cash. The three East African countries of Kenya, Tanzania and Uganda have an agreement that you can travel freely between these countries and do not have to get another visa when returning to each. If you exit this region and enter any other country, including Rwanda and the Democratic Republic of Congo, you will need

to get new visas to re enter Kenya, Tanzania and Uganda.

The border crossings we use in Tanzania include:

Namanga (Kenya/Tanzania border)
Isebania (Kenya/Tanzania border)
Songwe (Tanzania/Malawi)

Vaccinations

You should seek medical advice before travelling to Tanzania from your local health practitioner and ensure that you receive all of the appropriate vaccinations. As a guide Polio, Diphtheria, Hepatitis A & B, Typhoid and Tetanus is strongly recommended. Meningitis and Rabies are also recommended.

There is the risk of malaria in Tanzania so it is very important to check with your doctor before you go, to see whether malarial medication is required for the areas you are visiting.

A Yellow Fever International Certificate of Vaccination is required from travellers over one, arriving from countries infected with yellow fever or who were in transit through infected areas (unless they remained onboard or at the airport); this is particularly relevant if traveling from neighbouring African countries. If visiting Zanzibar from mainland Tanzania, a yellow fever certificate must be produced to gain entry.

Currency

The currency of Tanzania is the Tanzanian Shilling (code TZS, symbol TSh).

1 TSh = 100 cents. Notes are in denominations of TSh10,000, 5000, 2,000, 1,000 and 500. Coins are in denominations of TSh200, 100, 50, 20 and 10.

The Tanzanian Shilling is non exportable or importable. You can exchange US Dollars, Pound Sterling or Euro cash at bureau de changes or banks in larger towns/cities. Cash is changed with no commission. Exchange rates vary depending upon the denomination of the note that you want to change and generally smaller notes attract a lower exchange rate than high ones. Be aware that old pre-2010 US\$ banknotes or torn or marked banknotes are difficult to exchange in

Kenya to Kruger - 33 days

www.onthegotours.com
UK 020 7371 1113 info@onthegotours.com
AUS 1300 855 684 aus-info@onthegotours.com
NZ 0800 44 77 69 CAN 1 866 890 7038
USA 1 866 606 2960 SA 0800 990 311

This information has been compiled with care and good faith. They give an accurate illustration of the proposed arrangements for this holiday. Circumstances beyond our control such as changes in local conditions, inclement weather or other reasons could force us to make changes to this itinerary. Any costs shown are subject to change, though are an accurate reflection of costs at time of writing. Please also note that visa requirements are subject to change and are the responsibility of the traveller and not that of On The Go Tours.

Kenya to Kruger

Africa so make sure you take crisp new notes. Alternatively most large towns/cities have an ATM where cash can be withdrawn using Visa or MasterCard. Credit cards are very rarely accepted for making purchases.

Banking hours: Mon-Fri 0830-1230; Sat 0830-1300. Bureaux de change have longer hours and in the cities open on Sundays.

Travellers cheques are more difficult to change and require proof of purchase and often have restrictions of about US\$100 a day maximum. Please note that there is a surcharge when paying by travellers cheques.

Time & Voltage

Tanzania Time Zone - 3 hours ahead of GMT. Daylight saving time is not observed.

Standard voltage is 220-240V. Primary sockets require a Type G British BS-1363 or Type D Indian BS-546 type, three pin plug. You will need a voltage converter, and plug adapter in order to use U.S. appliances. We recommend getting a universal adapter.

Climate

Tanzania is sunny and tropical (accept in the mountain regions). Given the sheer size of the country, the climate varies dramatically in different regions. In coastal regions and on the islands of Zanzibar and Pemba it is hot and humid year-round with higher rainfall, whilst inland, the central plateau is dry and hot and the north-western highlands are cooler. The long rains occur between mid-March and the end of May and there are also short, lighter rains during November and December. The driest months are June to October.

South Africa Country Guide

Visas

Please be advised that visa requirements are subject to change and that visa procurement is the responsibility of the traveller and not On The Go Tours, therefore it is essential that you check current visa requirements with the embassy before travel. Please also ensure that your passport is valid for at least 6 months from your planned date of departure from Africa.

UK, Australian, USA and Canadian citizens do not require a tourist visa for South Africa for stays of up to 90 days.

Since 16th January 2017 all New Zealand passport holders have been required to obtain a visa prior to travelling to South Africa.

Nationalities who don't require a visa are able to get an entry stamp at the border on entering South Africa. Please contact your local South African embassy to find out if you require a visa prior to entering SA. If you are subject to visa requirements, you must apply and receive your visa before your departure for South Africa, visas are not issued at South African ports of entry.

The border crossings we use in South Africa include:

Noordoewer (South Africa/Namibia border)
Groblersberg/Martin's Drift (South Africa/Botswana)
Lebombo (South Africa/Mozambique)
Oshoek (Swaziland/South Africa)

Under 18s Travelling To Or Through South Africa

Parents travelling with children (under 18) into or out of South Africa, or transiting in South Africa will be asked to show the child's unabridged (full) birth certificate which lists the child's details and both parents' details. The abridged (short) birth certificate which only lists the child's details won't be accepted. Uncertified copies of birth certificates or copies of the parents/guardians identification will not be accepted. A parental consent affidavit (PCA) must have a certified copy of the parent's/guardian's identification (ie passport) attached to it.

Where only one parent is accompanying a child, parental or legal consent for the child to travel (eg an affidavit from the other parent or – if applicable – a death certificate) is required and there are other requirements for children travelling unaccompanied or with adults who are not their parents.

If you are travelling with children (under 18) it is essential that you contact the South African High Commission or the South African Department of Home Affairs for further

information relating to these regulations. If you do not carry the correct documentation you will not be allowed to enter the country. Obtaining the correct paperwork is the responsibility of the traveller and not On The Go Tours.

Please note: From the 11th November 2019, only a valid passport will be required for foreign minors travelling to South Africa.

Health & Vaccinations

You should seek medical advice before travelling to South Africa from your local health practitioner and ensure that all you receive all of the appropriate vaccinations. As a guide tetanus, diphtheria, polio, hepatitis A (for stays over 4 weeks) and hepatitis B (for stays over 3 months) are recommended.

A yellow fever vaccination certificate is required from travellers over one, coming from infected areas.

A low malaria risk occurs in northern parts of Mpumalanga (as well as Kruger National park, northern and northeastern parts of KwaZulu-Natal). If travelling to these regions and/or the countries north of South Africa, where there is a high malaria risk, we strongly recommend that you take anti-malaria medication. Precautionary measures to take to prevent contact with mosquitoes include: insect repellent, cover up at sundown, sleep under a mosquito net and wear long sleeve clothing and long trousers in the evenings.

Currency

The currency in South Africa is Rand (ZAR; symbol R)

1 Rand = 100 cents. Notes are in denominations of R200, 100, 50, 20 and 10. Coins are in denominations of R5, 2 and 1, and 50, 20, 10 and 5 cents.

Obtaining local currency within South Africa is very easy. ATMs are widely accessible and very reliable and offer the best rates of exchange. International credit cards are accepted in almost all shops, restaurants, hotels and game reserves.

Kenya to Kruger - 33 days

www.onthegotours.com
UK 020 7371 1113 info@onthegotours.com
AUS 1300 855 684 aus-info@onthegotours.com
NZ 0800 44 77 69 CAN 1 866 890 7038
USA 1 866 606 2960 SA 0800 990 311

This information has been compiled with care and good faith. They give an accurate illustration of the proposed arrangements for this holiday. Circumstances beyond our control such as changes in local conditions, inclement weather or other reasons could force us to make changes to this itinerary. Any costs shown are subject to change, though are an accurate reflection of costs at time of writing. Please also note that visa requirements are subject to change and are the responsibility of the traveller and not that of On The Go Tours.

Kenya to Kruger

Bureau de changes offer a quick and commission free service but are only found in the main centres such as Cape Town and Johannesburg. Travellers cheques can be changed at banks. These should be in US Dollars or Pound Sterling to avoid additional exchange rate charges. Please note that proof of identity may be requested in some instances, so it's useful to carry a passport or some form of photo identification. Travellers cheques can be difficult to exchange and tend to attract high commission fees.

Banking hours: Mon-Fri 0900-1530, Sat 0830-1100.

Rand can be used in Botswana, Namibia and South Africa, so if you are travelling on one of our overland safaris ample money for these three countries can be obtained prior to beginning your trip in Cape Town or Johannesburg. The Rand and Namibian dollar are tied to each other on an equal level and can be used interchangeably in Namibia. The Rand can also be easily converted to Pula in Botswana at good rates.

Time & Voltage

Time Zone - South Africa is 2 hours ahead of GMT. Daylight saving time is not observed

Standard voltage is 220-230V. Primary sockets require a 'Type M' - South African, electrical plug which has three thick circular pins. You will need a voltage converter, and plug adapter in order to use U.S. appliances.

Climate

Climatic conditions generally range from Mediterranean in the south western corner of the country to temperate in the interior plateau, and subtropical in the northeast. A small area in the northwest has a desert climate. Most of the country has warm, sunny days and cool nights. Rainfall generally occurs during summer (November-March), although in the southwest, around Cape Town, rainfall occurs in winter (from June-August). Temperatures are influenced by variations in elevation, terrain, and ocean currents.

Zambia Country Guide

Visas & Departure Tax

Please be advised that visa requirements are subject to change and that visa procurement is the responsibility of the traveller and not On The Go Tours, therefore it is essential that you check current visa requirements with the embassy before travel. Please also ensure that your passport is valid for at least 6 months from your planned date of departure from Africa.

UK, Australian, New Zealand, USA, Canadian citizens require a visa for Zambia. Visas can be obtained by most nationalities upon arrival at the airport/border. A single entry visa currently costs US \$50 and a double/multiple entry costs \$80. Irish and South African passport holders do not require a visa.

KAZA Visa

Zimbabwe and Zambia have re-introduced the popular, and much-awaited KAZA (Kavango-Zambezi) "Uni-Visa", which allows visitors to stay in either (or both) countries for up to 30 days for a single payment of US\$50.

The UniVisa is available at Harare, Victoria Falls, Lusaka and Livingstone International airports, the Victoria Falls land border (Zimbabwe/Zambia) and the Kazungula land border (Zimbabwe/Zambia/Botswana).

The border crossings we use in Zambia include:

Machinji (Malawi/Zambia)
Kazungula (Zambia/Botswana)

Vaccinations

You should seek medical advice before travelling to Zambia from your local health practitioner and ensure that all you receive all of the appropriate vaccinations. As a guide Tetanus, diphtheria, polio, hepatitis A and hepatitis B (for stays over 4 weeks) are strongly recommended.

Zambia has a malaria risk throughout the year in the whole country, therefore we strongly recommend that you take anti-malaria medication.

The yellow fever vaccination is required for passengers travelling to and from Zambia. All in-transit passengers travelling between

Zambia and South Africa, irrespective of the time period in transit, will also be required to present their Yellow Fever Vaccination Certificate.

Currency

Zambia's currency is the Zambia Kwacha (ZMW)

Notes are in denominations of ZMW100, 50, 20, 10, 5, and 2.

Banking hours vary but most are open from Mon - Fri 0815-1430

ATMs are available at Standard Chartered and Barclays Bank which accept Visa. Most large stores and hotels accept credit cards.

If travelling on one of our overland safaris there is no real need to convert any of your money to ZMW, as you will only be in Zambia for a short period of time. Campsites readily accept US\$ cash for food and beverages.

Time & Voltage

Time Zone - Zambia is 2 hours ahead of GMT. Daylight saving time is not observed.

Standard voltage is 230V. Zambia has several varieties of electrical sockets. The 3 primary sockets are 'Type C' - European, 'Type D' - Indian and 'Type G' - British. You will need a voltage converter and plug adapter in order to use U.S. appliances.

Climate

Zambia is warm all year round, but has three distinct seasons. Between December and April the weather is hot and wet; from May to August it is cooler and dry; between September and November conditions are hot and dry. Average summer temperatures range between 25°C to 35°C, while in winter they can fall as low as 6°C at night, although daytime temperatures average 24°C.

Zambian Airport Departure Tax

NOTES FOR THOSE FLYING OUT OF LIVINGSTONE AIRPORT IN ZAMBIA

An airport departure tax is in place for all flights departing from Zambian airports. The price will be US\$25 for international

Kenya to Kruger - 33 days

www.onthegotours.com
UK 020 7371 1113 info@onthegotours.com
AUS 1300 855 684 aus-info@onthegotours.com
NZ 0800 44 77 69 CAN 1 866 890 7038
USA 1 866 606 2960 SA 0800 990 311

This information has been compiled with care and good faith. They give an accurate illustration of the proposed arrangements for this holiday. Circumstances beyond our control such as changes in local conditions, inclement weather or other reasons could force us to make changes to this itinerary. Any costs shown are subject to change, though are an accurate reflection of costs at time of writing. Please also note that visa requirements are subject to change and are the responsibility of the traveller and not that of On The Go Tours.

Kenya to Kruger

flights and US\$8 for domestic flights. This is usually included in airline ticket prices; if not, it is payable at the airport in US dollars. Transit passengers and children under two years are exempt. A recently introduced additional airport tax (Airport Development Infrastructure Fee), approx USD\$8 per person domestic flights and USD\$25 for international flights, payable in cash on departure.

Zimbabwe Country Guide

Visas

Please be advised that visa requirements are subject to change and that visa procurement is the responsibility of the traveller and not On The Go Tours, therefore it is essential that you check current visa requirements with the embassy before travel. Please also ensure that your passport is valid for at least 6 months from your planned date of departure from Africa.

UK, Ireland, Australian, New Zealand, USA and Canadian passport holders require a visa to enter Zimbabwe, these visas are available at the border for the following costs: Australian, New Zealand and US citizens: US \$30 single/\$45 double entry visa. British and Irish is US\$55 single/\$70 double. Canadians can only obtain a single entry visa at the border for US \$75. South African passport holders can obtain a visa for free. Visas can be brought using post 2003 US\$ notes, GB£ or South African Rand.

KAZA Visa

Zimbabwe and Zambia have re-introduced the popular, and much-awaited KAZA (Kavango-Zambezi) "Uni-Visa", which allows visitors to stay in either (or both) countries for up to 30 days for a single payment of US\$50.

The UniVisa is available at Harare, Victoria Falls, Lusaka and Livingstone International airports, the Victoria Falls land border (Zimbabwe/Zambia) and the Kazungula land border (Zimbabwe/Zambia/Botswana).

The border crossings we use in Zimbabwe include:

Kazungula (Botswana/Zimbabwe)

Vaccinations

Seek advice from your doctor or travel clinic at least six weeks prior to departure about what vaccinations you require. Typically the list includes typhoid, tetanus, diphtheria, polio, hepatitis A and B (for stays over 4 weeks).

In Zimbabwe a malarial risk exists from November to June in all areas below 1200m and throughout the year in the Zambezi Valley. We strongly recommend that you take your anti-malaria medication. Other precautionary measures to prevent contact with mosquitoes include: insect repellent, cover up at sundown, sleep under a mosquito net and wear long sleeve clothing and long trousers in the evenings.

Yellow fever: A yellow fever vaccination certificate is required from travellers over one year of age coming from infected areas.

Currency

The Zimbabwean Dollar was abandoned in April 2009. The country has adopted a multi-currency scheme; the US Dollar and South African Rand can be used for domestic transactions.

Zimbabwe is essentially a cash-only society now with ATMs pretty useless for the foreigner. Credit cards only used in a handful of places, however all major hotels will now accept this payment. We recommend bringing enough cash to cover your stay in Zimbabwe (in either USD or ZAR) especially in the smaller denominations (US\$1-20 and ZAR10 - 200) as there is always a shortage of change and shopkeepers will often refuse larger bills. Please also be aware it is illegal to leave Zimbabwe with over \$1000 (or equivalent) in cash.

Zimbabwe introduced Bond Notes into circulation on 28 November 2017 which will be used alongside the US dollar and other currencies. These Bond Notes will be at a 1:1 parity with the US dollar. However, they are only legal tender within Zimbabwe and as such can only be used there. These Bond notes will be in \$2 and \$5 denominations and there will also be a new \$1 Bond coin.

Banking hours: Mon, Tues, Thurs, Fri - 0800-1500 , Wed 0800-1300 and Sat - 0800-1130. In major towns/cities most banks have an ATM. American Express, Diners Club and Visa cards are widely accepted. Major foreign currencies can be exchanged at bureaux de change and banks at the official exchange rate. Please also be aware it is illegal to leave Zimbabwe with over \$1000 (or equivalent). As of June 2016 it is becoming increasingly difficult to withdraw money from ATMs in Zimbabwe. There is a cash limit of \$500 per day - however a lot of banks are not replenishing the ATMs. It is strongly advised that you bring enough money with you before you enter Zimbabwe and don't rely on getting any whilst there.

Travellers cheques are accepted at banks, these should be in US Dollars or Pound Sterling to avoid additional exchange rate charges. Most banks will want to see your passport and proof of purchase receipt before cashing your travellers cheques. Please Note: Travellers cheques can be difficult to cash so do not rely upon them as your sole source of funds.

Time & Voltage

Standard voltage is 220-240V. Primary sockets require a 'Type G' - British plug, or 'Type D' - old English plug or Indian plug. You will need a voltage converter and plug adapter in order to use U.S. appliances.

Zimbabwe is 2 hours ahead of GMT. Daylight saving time is not observed.

Climate

Although located in the tropics, temperate conditions prevail all year round in Zimbabwe as the climate is moderated by altitude and the inland position of the country.

Zimbabwe has a rainy season from November/December to March, during this time days are hot and sunny with possible afternoon thunderstorms. By April and May most of the rain is gone, skies are clear and days are sunny and warm. Night time temperatures drop dramatically between June and August although daytime temperatures remain pleasantly warm. Late

Kenya to Kruger - 33 days

www.onthegotours.com
 UK 020 7371 1113 info@onthegotours.com
 AUS 1300 855 684 aus-info@onthegotours.com
 NZ 0800 44 77 69 CAN 1 866 890 7038
 USA 1 866 606 2960 SA 0800 990 311

This information has been compiled with care and good faith. They give an accurate illustration of the proposed arrangements for this holiday. Circumstances beyond our control such as changes in local conditions, inclement weather or other reasons could force us to make changes to this itinerary. Any costs shown are subject to change, though are an accurate reflection of costs at time of writing. Please also note that visa requirements are subject to change and are the responsibility of the traveller and not that of On The Go Tours.

Kenya to Kruger

August sees the start of the hot and dry season which continues until October.

Zambian Airport Departure Tax

NOTES FOR THOSE FLYING OUT OF LIVINGSTONE AIRPORT IN ZAMBIA

An airport departure tax is in place for all flights departing from Zambian airports. It will no longer be included on the ticket and will now be collected in Zambian Kwacha cash direct from the passenger. The amount payable is currently K28,000 for Domestic Flights and K56,000 for International Flights and is payable on departure from all Zambian airports. Passengers need to have ZMK cash available for this tax. Please note, departure taxes are subject to change.

OPTIONAL ACTIVITIES

We offer a number of locally operated optional activities and excursions on each of our expeditions. We feel that offering optional excursions affords a greater degree of flexibility, independence and choice to our travellers. To help you budget, below is a selection of optional excursions available on this trip.

Please note the following:

All prices are in US Dollars and are subject to change. Where activities occur away from your base, there may be an additional transfer cost. Make sure you have \$US dollars with you before you travel to Africa as it is notoriously difficult to get them here.

Victoria Falls activities (if applicable) - must be paid for in US\$ cash (GBP & ZAR also accepted at a lower rate).

Gorilla Trekking (if applicable) - the price varies dependant on where gorilla trek takes place ie Uganda, DRC or Rwanda.

We offer camping excursions in the Serengeti/ Ngorongoro Crater and Okavango Delta.

All optional excursions are offered by 3rd parties and independently of On The Go Tours. They are undertaken at your own risk and On The Go Tours take no responsibility for personal loss/injury caused.

Botswana

Chobe National Park Game Drive US \$80

Chobe River Cruise US \$70

Scenic Flight Over Okavango Delta (5 per plane) US \$140 per person

Kenya

Nairobi National Park half day. (Min 2 people) US \$175 per person

Malawi

Fresh Water Diving at Kande Beach (Price from) US \$60

Full Day Snorkelling in Lake Malawi US \$50

Horse Riding 2 - 3 hours US \$70 - \$240

Village Walk & Meal US \$40

South Africa

Blyde River entry US \$ 3

Soweto Tour - J'burg/Pretoria - Price from US \$85

Tanzania

Dhow Fishing Trip - Zanzibar US \$50

Moped Hire US \$100

Olduvai Gorge US \$35

Prison Island Snorkelling Trip US \$70

Scuba Diving - Price from US \$100

Snorkel Trip - Nungwe Half Day US \$60

Stone Town Tour - Zanzibar US \$60

Zambia

Zambezi Sunset Dinner Cruise US \$90

Zimbabwe

Bungee Jump (111m) US \$130

Helicopter Over The Falls 15 mins US \$165

Microlight Over The Falls 15 mins US \$180

Rafting & Boarding Combo Low Water (Excl USD10 NP Fee) US \$190

Rafting On The Zambezi Full Day US \$150

Kenya to Kruger - 33 days

www.onthegotours.com
 UK 020 7371 1113 info@onthegotours.com
 AUS 1300 855 684 aus-info@onthegotours.com
 NZ 0800 44 77 69 CAN 1 866 890 7038
 USA 1 866 606 2960 SA 0800 990 311

updated on 28-07-2021 11:15:23

This information has been compiled with care and good faith. They give an accurate illustration of the proposed arrangements for this holiday. Circumstances beyond our control such as changes in local conditions, inclement weather or other reasons could force us to make changes to this itinerary. Any costs shown are subject to change, though are an accurate reflection of costs at time of writing. Please also note that visa requirements are subject to change and are the responsibility of the traveller and not that of On The Go Tours.