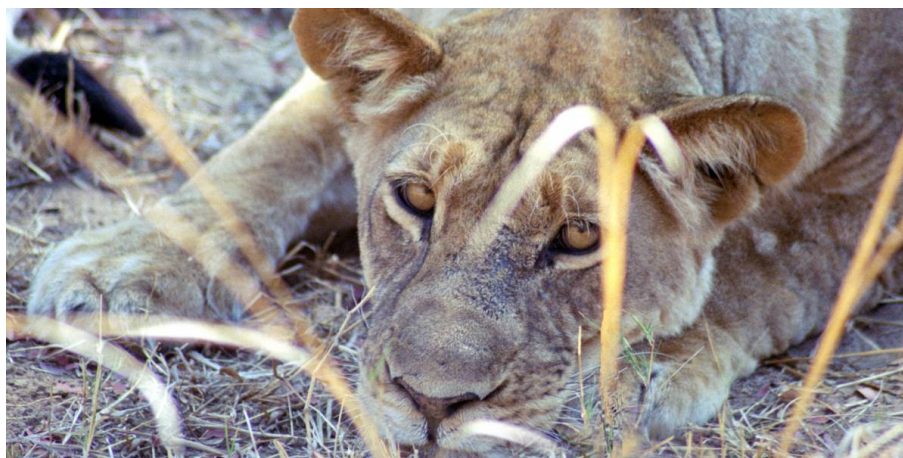


Wildlife Express Northbound

22 days | Victoria Falls to Nairobi



Take a walk on the wild side. Track the African elephant, lion, giraffe and zebra, chill out in Zanzibar, cool off at Lake Malawi, enjoy the pleasures of Victoria Falls - the adrenaline capital of Africa and have the time of your life!

HIGHLIGHTS AND INCLUSIONS

Trip Highlights

- **Zimbabwe** - start your adventure in Victoria Falls with a full day to visit the waterfall and join optional bungee jumping or river rafting
- **Botswana** - drive through the wildlife-rich national park and camp out in the reserve, listening to the sounds of the nocturnal wildlife
- **Zambia** - admire the Zambian side of thundering Victoria Falls in Livingstone and explore South Luangwa National Park on safari
- **Malawi** - visit the Malawian capital, Lilongwe and spend three days travelling along the shore of Lake Malawi, stopping often to explore various bays, beaches and local communities
- **Tanzania** - pass through Mikumi National Park, relax on the sandy beaches of Zanzibar and search for the Big Five in

the legendary Serengeti and Ngorongoro Crater

- **Kenya** - finish your African safari adventure in the Kenyan capital, Nairobi, and opt to extend your stay

What's Included

- Arrival transfer from Victoria Falls Airport on day 1
- 1st night dorm/camping in Victoria Falls and 17 nights camping, tents and sleeping mats provided
- 18 breakfasts, 14 lunches and 16 dinners
- A fully equipped overland truck for transportation and game drives
- Services of 3 person crew (leader, driver, cook)
- All camping fees and appropriate equipment
- Ngorongoro NP, Serengeti NP, Chobe NP & South Luangwa Park - park entry & game drives
- 3 night Zanzibar Excursion including ferry transfer, accommodation, Spice Tour and Dhow Sunset Cruise
- All road taxes and tolls

What's Not Included

- International flights and visas
- Sleeping bag - please bring your own
- Tipping - an entirely personal gesture
- Optional activities

Local Payment

\$1450pp, paid in USD

The local payment is a cost per person which needs to be paid in US Dollars cash only. It is this payment which in part covers the park fees and other inclusions such as meals as detailed under 'what you get'. The local payment also covers your arrival transfer and 1st night's accommodation. Please note that due to exchange rate fluctuations in the US dollar, the local payment amount may be subject to changes. This payment will be collected by your tour leader at the Welcome Meeting on day 1.

DETAILED ITINERARY

Day 1 : Victoria Falls

Saturday. Welcome to Victoria Falls! You will be met in the arrivals hall of Victoria Falls Airport by our representative holding an on the go tours/Africa Travel Company sign and transferred to your campsite. There is a pre-departure meeting at 1700hrs where you will meet your guide and the rest of your group.

Overnight - Victoria Falls

Wildlife Express Northbound - 22 days

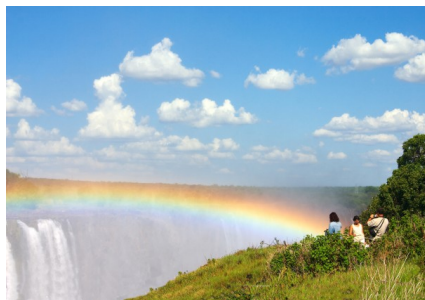
www.onthegotours.com
 UK 020 7371 1113 info@onthegotours.com
 AUS 1300 855 684 aus-info@onthegotours.com
 NZ 0800 44 77 69 CAN 1 866 890 7038
 USA 1 866 606 2960 SA 0800 990 311

This information has been compiled with care and good faith. They give an accurate illustration of the proposed arrangements for this holiday. Circumstances beyond our control such as changes in local conditions, inclement weather or other reasons could force us to make changes to this itinerary. Any costs shown are subject to change, though are an accurate reflection of costs at time of writing. Please also note that visa requirements are subject to change and are the responsibility of the traveller and not that of On The Go Tours.

updated on 09-07-2020 11:38:00

Wildlife Express Northbound

Day 2 : Victoria Falls



Today is spent relaxing or participating in a myriad of optional excursions. At 1700 metres wide and around 100 metres high, the Victoria Falls are one of the most memorable sights on this African safari. All year round, flights can be taken in fixed wing planes, micro lights or helicopters. Back on the ground, the falls can be seen from the Victoria Falls National Park with its many viewing points or from the Zambian side. All offer fantastic photographic opportunities.

White water rafting in the Batoka Gorge is considered to be world class. Besides the excitement of the grade 5 rapids, there are the "floats", where there is time to admire the scenic cliffs and occasional wildlife on the riverbanks.

Included Activity: Entrance to Victoria Falls
Optional excursions include trips into the Zambezi National Park; horse back safaris, a visit to the crocodile ranch, boat cruises and golf at The Elephant Hills Resort. Adrenalin junkies can bungee from the Victoria Falls Bridge connecting Zimbabwe and Zambia or abseil down the Batoka Gorge - neither activity is for the faint hearted! All year round, flights in fixed wing, micro light and ultra light aircraft or helicopters provide an aerial perspective over this magnificent World Heritage Site. White water rafting on the Zambezi is world class. Beside the excitement of the Grade 5 rapids, there are the "floats," where there is time to admire the scenic cliffs and the occasional wildlife on the riverbanks.
Overnight - Victoria Falls (B)

Day 3 : Chobe National Park

Victoria Falls - Chobe NP (Botswana). We head out from Victoria Falls to the border crossing to Botswana. Once we've completed the border formalities, we continue to the

town of Kasane, situated on the banks of the Chobe River. The Chobe River forms a border between Botswana and Namibia and Zambia and is the main water source to the Chobe National Park. After lunch, once we are packed and prepared, we leave for our Chobe National Park Overnight Mobile excursion – an overnight experience in the wilds of the Chobe National park. Chobe is one of Botswana's premier game parks, renowned for its large elephant herds. Spend the afternoon in search of wildlife while we game drive to our camp within the park where we spend the evening surrounded by the night-time noises of the local wildlife. Look out for the rare Sable and Roan Antelope on your game drive, with their majestic backward slanting horns, or try keep a count of the Lilac Breasted Roller's that swoop by!

Included Activity: Chobe Overnight Mobile Excursion **Overnight - Chobe National Park (B, L, D)**

Day 4 : Livingstone



Chobe NP - Livingstone (Zambia). After our night in the bush, we head out early to continue our search for wildlife, before packing up the camp and heading back to Kasane. Once returning to the camp at Kasane, we get back on our truck and continue to the town of Livingstone. This afternoon we have the opportunity to view The Falls from the Mosi-oa-Tunya National Park, Zambia or partake in a sunset boat cruise on the Zambezi River. Another fantastic photo opportunity!

Optional Activity: Zambezi Sunset River Cruise **Overnight - Livingstone (B, D)**

Day 5 : Lusaka area

Livingstone - Lusaka area. An early morning start sees us head north through southern

Zambia. As we drive, we pass through a few of the villages and towns of Zambia along the way. Prosperous during the copper boom in the 60s, Zambia was able to build infrastructure at the main mining and farming communities. After the fall of the copper industry, the country was left virtually bankrupt and existing infrastructure was left to fall to ruin. Due to foreign investment and a rise in the mining industry, Zambia is today once again starting to prosper. The difference is evident in the cities with the availability of foreign stores, banks and imported cars, while the villages and smaller towns are still to catch up. **Overnight - Lusaka area (B, L, D)**

Days 6-7 : South Luangwa NP



Lusaka area - South Luangwa National Park. Departing at early this morning, we continue on to South Luangwa, a breathtaking park situated on the Luangwa River in the Eastern part of Zambia. South Luangwa was founded in 1938 as a game reserve, 1972 was the year it was declared as a national park, and today it covers over 9000 kilometres squared. Animals such as giraffe, buffalo and elephants can be found in abundance. The Luangwa river is home to many a hippo and croc. We will arrive at camp later this evening.

Included Activity: Game drive through South Luangwa National Park in the overland truck **Overnight - South Luangwa National Park (B:2, L:2, D:2)**

Days 8-10 : Lake Malawi Beaches

South Luangwa - Lake Malawi Beaches (Malawi). From Luangwa we head north east on the old 'East Road' to the Zambia/Malawi border. In the days of old, the route from Cairo to Cape Town passed through Lusaka and it's along this route to Malawi we travel today.

Wildlife Express Northbound - 22 days

www.onthegotours.com
UK 020 7371 1113 info@onthegotours.com
AUS 1300 855 684 aus-info@onthegotours.com
NZ 0800 44 77 69 CAN 1 866 890 7038
USA 1 866 606 2960 SA 0800 990 311

This information has been compiled with care and good faith. They give an accurate illustration of the proposed arrangements for this holiday. Circumstances beyond our control such as changes in local conditions, inclement weather or other reasons could force us to make changes to this itinerary. Any costs shown are subject to change, though are an accurate reflection of costs at time of writing. Please also note that visa requirements are subject to change and are the responsibility of the traveller and not that of On The Go Tours.

Wildlife Express Northbound

While today is mostly spent driving, we do cross the impressive Luangwa River Bridge which is heavily guarded due to its close proximity to the Zimbabwean & Malawian borders. We'll also stop off to purchase some fresh produce and coal from the local sellers along the way.

Leaving Zambia we cross into Malawi, the 'Warm Heart of Africa'. We stop off in the capital, Lilongwe, a small city distinctively divided into the old town and the new administrative centre. Malawi is a landlocked country with 20% of its total area made up of beautiful Lake Malawi. We camp first at the central Lake, and then in the northern area over the next 3 days.

Spend the days learning the game of bao from the locals, scour the markets for a bargain or simply relax on the pristine beaches. Malawi's temperate climate allows for swimming in the clear blue fresh-water lake all year round. Explore the beautiful shore where you'll happen upon the local fishermen sorting their catch. Traditional fishing techniques are still practiced and to appreciate their boating skills, try to paddle a dugout canoe yourself! At night you'll see the 'fairy' lights of the fishermen out on the lake. The various beachside campsites along Lake Malawi's shores offer many optional Excursions including a variety of water sports, horseback rides and a visit to the local village and school.

Optional activities vary; however we do recommend that you do the village tour. Please note that you can bring along with you pens, notepads, pencils and dry starch foods for the village tour. For more information please speak to your crew **Overnight - Lake Malawi Beaches (3)** (B:3, L:3, D:3)

Day 11 : Iringa

Lake Malawi Beaches - Iringa (Tanzania). After a relaxing few days we leave Malawi, entering Tanzania through the border post at Songwe. Winding our way through the beauty of the Tukuuyu tea and banana plantations, we head towards Iringa where we spend the night in the beautiful rustic 'Farmhouse' campsite

famous for its Amarula Hot Chocolates and its steamy showers! **Overnight - Iringa** (B, L, D)

Day 12 : Dar es Salaam

Iringa - Dar es Salaam. This morning we head off early and make our way to Dar es Salaam. We pass through the Mikumi National Park where it is possible to view a range of wildlife from the roadside, totally impervious to the passing traffic. Today's drive time is extended due to the heavier amount of traffic heading in to the city, but the sights and sounds of Dar's vibrant outer suburbs are sure to keep you entertained. Look out for the colourful shop-fronts with their sometimes humorous 'catch phrases'. On arrival in Dar es Salaam, we make our way to our lovely seaside campsite and prepare for our departure to Zanzibar the next morning. **Overnight - Dar es Salaam** (B, L, D)

Days 13-15 : Zanzibar



Dar es Salaam - Zanzibar. A ferry from Dar es Salaam takes us to the "Spice Island," where we spend the next 3 nights. Zanzibar is steeped in history and was one of the major starting points for most East African explorers in their quest for new lands. New passengers may join us to replace those that will leave us at the end of our excursion to Zanzibar. History aside, Zanzibar offers a wealth of experiences for the visitor. Today the quiet streets of the old Stone Town still retain their Arabic influence, from the Medina-like shops to the palaces of the Sultans, who founded their vast empires on the spoils of the slave and ivory trade. The island is famous for its spices and an excursion around a spice plantation is always a fascinating experience. Other options include a trip to the beautiful beaches and giant tortoises of Prison Island, a full day scuba dive in Nungwe or a fishing trip in a traditional dhow. Mopeds are available for

hire if you'd like to explore the more remote areas of the island. Zanzibar is a seafood lover's paradise. Numerous restaurants offer a great variety of the freshest catch from the ocean - crayfish being a popular speciality. Alternatively, mingle with the locals for dinner at the Forodhani Gardens seafront market, where delicious, inexpensive seafood is on offer.

PLEASE NOTE: Meals are for your own account whilst on Zanzibar. The Trip Leader joins you while meals can be enjoyed from a wide selection of restaurants. There are also a wide variety of optional excursions on offer, please see the price guide at the end of this document for more details.

Included Activity: Zanzibar excursion, Spice Tour & Dhow cruise excursion.

Overnight - Zanzibar (B:1)

Day 16 : Zanzibar



Zanzibar - Dar es Salaam. Leaving Zanzibar in the afternoon, we return to the mainland and another night in Dar es Salaam. Arrival back to camp is usually in the late afternoon, or early evening. **Overnight - Dar es Salaam** (D)

Days 17-18 : Arusha

Dar es Salaam - Pangani - Arusha. From Dar es Salaam we continue north towards the coastal town of Pangani where we spend the night. The following day we continue through vast sisal plantations and African bushveld to Arusha. On the way, we pass The Pare and Usambara Mountain ranges before driving through the town of Moshi. Moshi is the base for Mount Kilimanjaro climbing expeditions and weather permitting; we may even catch a glimpse of this magical mountain's snowy summit - a photo opportunity not to be missed! Tonight we stay at a campsite in Meserani on

Wildlife Express Northbound - 22 days

www.onthegotours.com
 UK 020 7371 1113 info@onthegotours.com
 AUS 1300 855 684 aus-info@onthegotours.com
 NZ 0800 44 77 69 CAN 1 866 890 7038
 USA 1 866 606 2960 SA 0800 990 311

This information has been compiled with care and good faith. They give an accurate illustration of the proposed arrangements for this holiday. Circumstances beyond our control such as changes in local conditions, inclement weather or other reasons could force us to make changes to this itinerary. Any costs shown are subject to change, though are an accurate reflection of costs at time of writing. Please also note that visa requirements are subject to change and are the responsibility of the traveller and not that of On The Go Tours.

updated on 09-07-2020 11:38:00

Wildlife Express Northbound

the outskirts of Arusha, before heading out on our optional excursion to the Serengeti and Ngorongoro Crater tomorrow. **Overnight - Pangani (1) Arusha (1)** (B:2, L:2, D:2)

Days 19-21 : Serengeti & Ngorongoro



This morning we visit the Meserani Reptile Park and Masai Cultural Museum. A few minutes' walk from the campsite is a gallery selling the bright and iconic Tinga Tinga paintings. Alternatively the town of Arusha is nearby to explore. After enjoying lunch at our camp against the backdrop of Mount Meru we meet our Tanzanian guides and transfer into locally operated 4WD vehicles. These vehicles have been adapted for safari use and allow excellent viewing and photographic opportunities through the opening roof hatches.

The Ngorongoro/Serengeti excursion takes us via the Masai town of Mtu Wa Mbu (Mosquito River) that lies adjacent to the Lake Manyara National Park and up the Rift Valley Escarpment to the higher lying village of Karatu. Karatu offers magnificent views over the surrounding hills and has many well established wheat farms that add to the picturesque panoramas. We spend the evening at a pleasant campsite in Karatu. The following morning we depart early for the Ngorongoro Conservation area and head into the wildlife rich Ngorongoro Crater. This World Heritage Site boasts some of the best game viewing in Africa – including the elusive Black Rhino.

After our game drive in the Crater, we continue down the Crater rim and past the 'Cradle of Mankind' on our way to the Serengeti National Park. We cross the vast plains as we game drive through the southern and central areas in the park. Tonight we bush

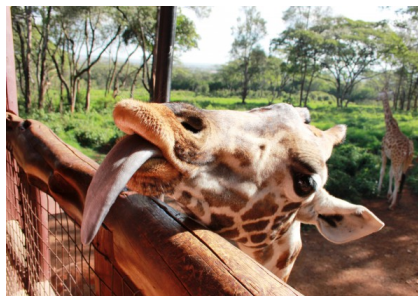
camp (no ablutions) in the wild surrounded by the sounds of the African wilderness. In the morning, we head off for another game drive and explore the landscape in search of the resident wildlife. With some luck, we may see some of Africa's 'Big 5'!

After our morning drive, we head back across the plains and the lush Crater rim to our truck at Arusha, where we spend the evening musing over our thrilling wildlife experience.

Included Activity: Serengeti & Ngorongoro excursion.

Overnight - Karatu (1) Serengeti (1) Arusha (1) (B:3, L:3, D:3)

Day 22 : Nairobi



Arusha - Nairobi (Kenya). We set off early this morning and make our way to the Tanzania/Kenyan border and the small border town of Namanga. After completing the border formalities, we continue on our journey to the capital city Nairobi where our safari ends.

We recommend staying an extra night in Nairobi in case of any delays on our way into Kenya. Also, if you have time you enjoy some of the many options available in this bustling city; visit The David Sheldrick Wildlife Trust, where you can view the orphaned baby elephants at feeding time, or head to the Giraffe Centre in Langata, if you haven't had your fill of game viewing, then Nairobi National Park offers some great day trips or if you haven't quite got all those souvenirs you wanted, take a "Matatu" to the local curio markets or why not try the fair on offer at the famous Carnivores restaurant. (B)

HOTELS

Highlighted below are some of the hotels which we frequently use on this tour, though

we reserve the right to substitute these hotels to ones of a similar standard.

Please refer to your Tour Voucher for your confirmed arrival hotel and further arrival information.

Shearwater Explorers Village

Situated in the bohemian town of Victoria Falls, and 400m from the Falls themselves, the affordable accommodation at the Shearwater Explorers Village consists of 5 campsites with modern bathroom facilities, and 16 chalets with en-suite showers and A/C. Shearwater operates a range of activities at the Falls, from bungee jumping to river rafting - and when the day is over, guests can wind down with Wi-Fi in the lounge areas, a drink by the pool, or even a back rub in the massage tent.



Victoria Falls Rest Camp

Located a stone's throw away from the Artist village & Elephant Walk Shopping is the Victoria Falls Rest Camp. Offering camping and dorm room accommodation, this camp features a year-round outdoor pool and barbecue facilities. Daily continental or cooked breakfast is served at the in-house restaurant, which also offers a variety of local African dishes. Wi-fi is available and some units feature equipped kitchens.



Croc Valley Camp

Croc Valley Camp is located on the banks of the Luangwa River, and provides accommodation ranging from riverfront tents to ensuite chalets, built on stilts to avoid the off-season floods. Watch elephants roam across the campsite, experience a game

Wildlife Express Northbound - 22 days

www.onthegotours.com
 UK 020 7371 1113 info@onthegotours.com
 AUS 1300 855 684 aus-info@onthegotours.com
 NZ 0800 44 77 69 CAN 1 866 890 7038
 USA 1 866 606 2960 SA 0800 990 311

This information has been compiled with care and good faith. They give an accurate illustration of the proposed arrangements for this holiday. Circumstances beyond our control such as changes in local conditions, inclement weather or other reasons could force us to make changes to this itinerary. Any costs shown are subject to change, though are an accurate reflection of costs at time of writing. Please also note that visa requirements are subject to change and are the responsibility of the traveller and not that of On The Go Tours.

Wildlife Express Northbound

drive through South Luangwa National Park, or relax with a gin & tonic at the bar. The camp also features a large outdoor pool, kitchen facilities, and daily laundry service.



About Overlanding

- To get the most out of your overland tour of Africa we highly suggest you read the 'About Overland Safaris' page on our website. It can be found under the Africa travel guide section on our website and is a comprehensive resource for understanding what to expect on an overland tour in Africa
- Overlanding is not considered a luxury holiday but is undoubtedly a lot of fun if camping under the stars and being part of an entirely self-sufficient travelling group is to your liking
- Africa is a vast continent and distances between the highlights we visit can be very far apart, but some early morning starts and late arrivals into camp will ensure that your time is maximised to see as many sights as possible
- We believe that a flexible approach to travel and good sense of humour are essential when undertaking overland safaris, although we trust that any hiccups in the itinerary will be resolved as soon as possible by our trusted partners

Tour Leaders and Groups

Our longest Overland Camping Safari we offer is our Great African Expedition - 57 Days, generally all other safaris we offer are sectors of this larger safari or similarly a fragment of one of the another safari's we offer. As such, on your holiday you may have travellers join you part way through your safari and also there may be travellers who end their safari when you continue on. There may also be times when there is a change of crew and truck (changed to suit group size or local road conditions).

Please Note

This tour is operated in conjunction with our trusted partner and you will join travellers from different operators, not solely On The Go.

This itinerary should be used as a guide only and may vary from day to day depending on road & weather conditions, political situations and group decisions.

All prices & Local Payments are subject to change.

Due to Tourism Laws in some of the countries we visit, there may be a truck and crew change during the trip.

Family Friendly Departures

Parents with children and teens aged 6 to 17 are welcome on select departure dates of this trip. Children under 12 get 5% off the trip price but there is no reduction to the local payment. To see which departure dates are family friendly please refer to our website.

Who's on tour?

People from all over decide that the back to basics and close-up approach to viewing Africa is for them – from Canada to New Zealand to Singapore and the UK. Generally people are 30-50yrs, easy going and happy to participate. They have a love of camping and as some days are long, don't mind a drive. Whilst the truck is purpose built and ideal for this style of safari, for those who require more comfort we suggest you opt for one of our lodge safaris.

Things To Bring

- A rucksack/back pack is the best luggage to bring as your main bag
- A sleeping bag
- For extra comfort, bring a travel pillow
- Spare camera batteries/film and dustbag
- Mosquito spray (with active DEET ingredient)
- Your own personal first aid kit
- A torch
- A small daypack for your day-to-day needs.
- Antibacterial wipes
- A photocopy of your passport data pages
- Your Yellow Fever Vaccination Certificate
- Your travel insurance policy details

- Hat, sunglasses & sunscreen
- Warm clothing - raincoat, warm hat, socks, gloves etc as across Africa wet/dry and hot/cool climatic periods change invariably.

Budgeting

Africa is not as cheap as many people believe and we recommend that you budget between US \$50-70 per day for expenses such as drinks, snacks and curios. Budget more if you plan on buying a lot of souvenirs and budget for your optional excursions and visas separately.

Transport on Tour

Our overland vehicles are custom built converted Mercedes Benz or MAN trucks that have seating

space for our passengers and a storage areas for luggage and all trip equipment. The trucks seat

between 27-30 passengers on our camping trips. Most seats are forward facing, though some models have a combination of forward, backward and some inward facing seats with tables. There is no air-conditioning on board, instead vehicles have sliding glass windows, and the seating area is raised providing a great advantage for game viewing and photography. Seats are cushioned and there is storage space for personal items like cameras, snacks and day packs in the seating area.

Meals on Tour

Meals and menus vary as food is purchased en-route, and is subject to produce that is available

seasonally in the areas we travel through. As we support the local communities along the way, fresh produce is mostly purchased direct from the producer or local grower and therefore has an organic appearance. Our safari cooks are able to offer a wide variety of menus with the ingredients available, even if the produce on offer is not of the same selection as what you may be used to back home. The breakfast spread consists of bread (toast when time allows), spreads and cereals with a hot breakfast every few days. Lunches are mostly prepared en-route with a supply of 'build your own' sandwich ingredients available. Dinners are cooked in the evenings

Wildlife Express Northbound - 22 days

www.onthegotours.com
 UK 020 7371 1113 info@onthegotours.com
 AUS 1300 855 684 aus-info@onthegotours.com
 NZ 0800 44 77 69 CAN 1 866 890 7038
 USA 1 866 606 2960 SA 0800 990 311

This information has been compiled with care and good faith. They give an accurate illustration of the proposed arrangements for this holiday. Circumstances beyond our control such as changes in local conditions, inclement weather or other reasons could force us to make changes to this itinerary. Any costs shown are subject to change, though are an accurate reflection of costs at time of writing. Please also note that visa requirements are subject to change and are the responsibility of the traveller and not that of On The Go Tours.

Wildlife Express Northbound

on arrival at the campsite. A wide array of dinner menus are on offer during your safari, consisting of curries, stews, pastas, BBQs and even roasts!

Participation on Tour

All of our overland safaris are participation trips meaning that all passengers are expected to help out around camp. The crew members running the trip will set up a rota system that will be followed. One day you may be on cleaning duty, the next day you may be on cooking duty and so forth. This is not only to make the trip easier for all involved but also for you as the passengers to get to know one another while on trip.

KNOW BEFORE YOU GO

Passports & Visas

Please ensure that you have at least two blank pages in your passport, plus an additional blank page for each visa/African country you are visiting. If travelling on one of our longer overland safaris we recommend that you have at least 12 blank pages in your passport.

Please also note that your passport must be valid for a minimum of six months from the end date of your trip.

Any visa information provided in this document is for general guidance purposes only, visa requirements and fees are subject to change. It is essential that you check current entry requirements with each relevant embassy/consulate prior to departure. Visa procurement is the responsibility of the traveller and not of On The Go.

Booking Your Flights

When booking your departure flight you should allow time at the end of your African safari for any unexpected delays. We recommend that you book your onward flight no earlier than 24 hours after the end of your safari. In the case of our longer overland camping safaris (22 days or more) we advise against making any firm arrangements for at least 48 hours after the scheduled departure date. Your tour leader can help to arrange post tour accommodation locally upon request.

Allergies/Likes/Dislikes

Whilst all will be done to accommodate everyone, sometimes the choice available is limited as your cook may be making the best of very limited availability, so some flexibility may be required when encountering something you're not particularly fond of or have chosen not to eat as a lifestyle choice. Should you possess allergies which will result in a medical emergency or a life threatening situation then please ensure you speak to your cook on arrival so you can discuss the options available whilst en-route. This will ensure also that they are fully aware of what you can or cannot eat and make adjustments.

Botswana Country Guide

Visa

Please be advised that visa requirements are subject to change and that visa procurement is the responsibility of the traveller and not On The Go Tours, therefore it is essential that you check current visa requirements with the embassy before travel. Please also ensure that your passport is valid for at least 6 months from your planned date of departure from Africa.

UK, Ireland, Australian, New Zealand, USA, Canadian and South African citizens do not require a visa for entrance into Botswana.

The few countries that do require visas; mostly Eastern European and Asian Nationals, need to obtain them prior to arrival at the border. Visas are not issued at Botswana ports of entry, if you arrive without a visa, immigration officials will refuse you entry to Botswana.

The border crossings we use in Botswana include:

- Muhembo (Botswana/Namibia border)
- Kazangula (Botswana/Zimbabwe or Zambia border)
- Groblersberg/Martin's Drift (South Africa/Botswana)

Botswana Tourism Levy from 1st June 2017 - postponed until further notice

From the 1st June 2017 a tourism levy of \$30USD is payable when entering Botswana. Payment is taken at the border in US dollars cash, debit or credit card. The Levy is valid for

a 30 day period and can be used for multiple entry.

Please note this Levy has been postponed until further notice.

Vaccinations

You should seek medical advice before travelling to Botswana from your local health practitioner and ensure that you receive all of the appropriate vaccinations. As a guide Polio, Diphtheria, Hepatitis A and Tetanus is strongly recommended. Rabies may also be recommended.

There is the risk of malaria in certain areas of Botswana so it is very important to check with your doctor before you go, to see whether malarial medication is required for the areas you are visiting. A valid Yellow Fever vaccination certificate is also required if travelling into Botswana and you have previously been in an infected country.

Currency & Banking

The currency of Botswana is the Botswana Pulas (BWP) 1 Pula = 100 Thebe. Notes are in denominations of BWP10, 20, 50 and 100.

Coins are in denominations of BWP1, 50, 25, 10, 5, 1.

There are no restrictions on the import of local or foreign currencies, provided they are declared on arrival. Export of local currency is limited to BWP50 and foreign currencies up to the amount declared on arrival. It is easy to change most forms of currency including US\$, GB£, Euros and South African Rand. The best place to change money in Botswana is the bureau de changes as banks charge commission to change either cash or travellers cheques. ATMs are available in all main towns, cities, shopping centres and most petrol stations. MasterCard, Visa, American Express and Diners Club are all widely accepted.

Travellers cheques should be in US Dollars or Pound Sterling to avoid additional exchange rate charges. Proof of identity may be requested in some instances, so it's useful to carry a passport or some form of photo identification. In large cities travellers cheques can incur a high surcharge.

Wildlife Express Northbound - 22 days

www.onthegotours.com
 UK 020 7371 1113 info@onthegotours.com
 AUS 1300 855 684 aus-info@onthegotours.com
 NZ 0800 44 77 69 CAN 1 866 890 7038
 USA 1 866 606 2960 SA 0800 990 311

This information has been compiled with care and good faith. They give an accurate illustration of the proposed arrangements for this holiday. Circumstances beyond our control such as changes in local conditions, inclement weather or other reasons could force us to make changes to this itinerary. Any costs shown are subject to change, though are an accurate reflection of costs at time of writing. Please also note that visa requirements are subject to change and are the responsibility of the traveller and not that of On The Go Tours.

Wildlife Express Northbound

Banking hours: Mon-Fri 0900-1530, Sat 0830-1100.

Time & Voltage

Time Zone - Botswana is 2 hours ahead of GMT. Daylight saving time is not observed.

The standard voltage is 220 - 240V. Primary sockets require a 'Type M' - South African, electrical plug which has three thick circular pins. You will need a voltage converter, and plug adapter in order to use U.S. appliances.

Climate

Botswana's climate is mainly temperate. During the summer months (October-April) the weather can be very hot with daytime temperatures of around 30 Celsius and higher. The rainy season (typically lasting from January to March) can be hot with temperatures still in the mid 30's and only dropping to around the mid 20's overnight. Winter (May-September) brings a cool change yet is still reasonably warm and mostly pleasant with an average temperature of around 25°C. Early mornings and evenings may be cold and frosty especially in the Kalahari region. The amount of rainfall decreases the further you travel west or southwards during the winter and rainy season months.

Travelling with children in Botswana

The Ministry of Nationality, Immigration and Gender Affairs informs the general public that it has imposed requirements for minors (children under 18) travelling through the country's ports of entry.

Effective from the 1st October 2016 minors travelling through the country's borders will be required to produce certified copies of unabridged birth certificates in addition to their valid passports. In the event that one parent is not travelling with the child, the other parent's affidavit consenting to such travel should be availed. However, an affidavit will not be required if the father's name does not appear on the child's birth certificate."

To summarise the above, should families be travelling with children below the age of 18 they will require the following:

- Valid Passports
- Certified unabridged birth certificates for all minors below the age of 18
- An Affidavit signed by the non-travelling parent should the minor be travelling with one parent

Unfortunately these regulations are very strict therefore we urge all parents travelling to Africa with their children to contact all relevant embassies well prior to departure to ensure they have the correct documentation as if you do not, there is a high chance you will be denied entry.

Kenya Country Guide

Visas

Please be advised that visa requirements are subject to change and that visa procurement is the responsibility of the traveller and not On The Go Tours, therefore it is essential that you check current visa requirements with the embassy before travel. Please also ensure that your passport is valid for at least 6 months from your planned date of departure from Africa.

South African passport holders do not require a visa to visit Kenya for up to 30 days. Most other nationalities, including UK, USA, Canadian, Australian and New Zealand passport holders, do require a visa to enter Kenya.

On 1st July 2015 the government of Kenya introduced an electronic visa application. It is still possible to purchase a visa upon arrival up until 31 August 2015. From 01 September 2015 ALL tourists wishing to visit Kenya need to apply for a visa online at www.ecitizen.go.ke. The visa process can take up to 7 working days. For further details please visit our Kenya visa page -<http://www.onthegotours.com/Kenya/Visas>.

All passengers require an onward/return tickets and sufficient funds for length of intended stay (at least US\$500).

The border crossings we use in Kenya include:

- Busia (Kenya/Uganda border)
- Namanga (Kenya/Tanzania border)

Isebania (Kenya/Tanzania border)

A Yellow Fever Vaccination Certificate is required for travel to Kenya and if travelling from an infected area it must be presented upon arrival in order to be granted entry. Please also note that if you are travelling onward to Uganda and/or Rwanda you will need a Yellow Fever Certificate to produce on arrival in order to be granted entry.

East Africa Tourist Visa

If you are planning on visiting Uganda and/or Rwanda when travelling to Kenya then you can apply for an East Africa tourist visa which will cover all countries. The visa allows multiple entry into these countries and is valid for 90 days. It can be applied for in advance or upon arrival at Nairobi International Airport.

Vaccinations

You should seek medical advice before travelling to Kenya from your local health practitioner and ensure that you receive all of the appropriate vaccinations. As a guide Polio, Diphtheria, Hepatitis A&B and Tetanus is strongly recommended. Rabies and Meningitis are also recommended.

There is the risk of malaria in Kenya so it is very important to check with your doctor before you go, to see whether malarial medication is required for the areas you are visiting. A Yellow Fever Vaccination Certificate is required for travel to Kenya and if travelling from an infected area it must be presented upon arrival in order to be granted entry. Please also note that if you are travelling onward to Uganda and/or Rwanda you will need a Yellow Fever Certificate to produce on arrival in order to be granted entry.

Time & Voltage

Kenya is 3 hours ahead of GMT. Daylight saving time is not observed.

In Kenya the standard voltage is 220-240V. Primary sockets require a 'Type G' - British BS-1363 type, three pin plug. You will need a voltage converter, and plug adapter in order to use U.S. appliances. We recommend packing a universal adapter.

Wildlife Express Northbound - 22 days

www.onthegotours.com
 UK 020 7371 1113 info@onthegotours.com
 AUS 1300 855 684 aus-info@onthegotours.com
 NZ 0800 44 77 69 CAN 1 866 890 7038
 USA 1 866 606 2960 SA 0800 990 311

This information has been compiled with care and good faith. They give an accurate illustration of the proposed arrangements for this holiday. Circumstances beyond our control such as changes in local conditions, inclement weather or other reasons could force us to make changes to this itinerary. Any costs shown are subject to change, though are an accurate reflection of costs at time of writing. Please also note that visa requirements are subject to change and are the responsibility of the traveller and not that of On The Go Tours.

Wildlife Express Northbound

Currency

The currency of Kenya is the Kenyan Shilling (code KES, symbol KSh).

1 KSh = 100 cents. Notes are in denominations of: KSh1,000, 500, 200, 100 and 50.

Coins are in denominations of KSh20, 10 and 5.

Banking hours: Mon-Fri 0900-1500, Sat 0900-1100. You can exchange money in banks or bureau de changes. Be aware that old pre-2010 US\$ banknotes or torn or marked banknotes are difficult to exchange in Africa so make sure you take crisp new notes! In major towns/cities most banks have an ATM. American Express, Diners Club, MasterCard and Visa cards are all widely accepted.

Travellers cheques can be changed at banks, these should be in US Dollars or Pound Sterling to avoid additional exchange rate charges. Most banks will want to see your passport and proof of purchase receipt before cashing your travellers cheques. Please Note: Travellers cheques can be difficult to cash and often have restrictions of about US\$100 a day maximum. They also tend to attract high commission charges, especially when exchanging for hard currency.

Climate

Kenya is an excellent year round destination with a favourable climate and reasonably low rainfall. In general the hottest months are December to March, although the climate varies enormously from place to place. The lowland coastal areas are tropical, with year round high temperatures and humidity, which is at its peak in April and May, although tempered by monsoon winds. The highlands are more temperate with four seasons. Nairobi has a very pleasant climate throughout the year due to its altitude. Near Lake Victoria, the temperatures are much higher and rainfall can be heavy.

Plastic Bag Ban

Effective August 2017: All passengers arriving into Kenya including tourists can possibly face very heavy fines for using plastic bags in any way, shape or form. Using, manufacture or importation of plastic bags, including garbage

bags and shopping bags is illegal. Offenders, including tourists, could face very heavy fines. Visitors/Citizens and Residents alike are advised to avoid packing any plastic bags in their suitcases or in carry-on hand luggage before flying to Kenya. Items purchased at the airport before boarding the aircraft should be removed from plastic bags. Please check hand luggage before disembarking at entry points and any plastic bags should be left in the plane.

Similarly the transparent "zip-lock" plastic bags that some airlines require passengers to use for keeping liquids, cosmetics, toiletries etc separately in hand luggage are also not permitted to be brought and should be removed and left on the plane before disembarking.

Malawi Country Guide

Visas

Please be advised that visa requirements are subject to change and that visa procurement is the responsibility of the traveller and not On The Go Tours, therefore it is essential that you check current visa requirements with the embassy before travel. Please also ensure that your passport is valid for at least 6 months from your planned date of departure from Africa.

As of the 1st October 2015 passport holders of (but not limited to) UK, USA, Canada, Australia and New Zealand will be charged a visa fee at the border into Malawi. The cost is \$50 for a 7 day transit visa and \$75 for a 90 day single entry visa.

Please check with your local Malawi Embassy or High Commission prior to departure.

The border crossings we use in Malawi include:

Machinji (Malawi/Zambia border)
Songwe (Malawi/Tanzania border)

Vaccinations

Seek advice from your doctor or travel clinic at least six weeks prior to departure about what vaccinations you require. Typically the

list includes typhoid, tetanus, polio, hepatitis A and B and meningitis.

A malaria risk exists throughout the country, we strongly recommend that you take anti-malaria medication.

A Yellow Fever Vaccination Certificate is required from travellers over one year of age coming from infected areas.

Currency

The currency of Malawi is the Malawian Kwacha (MWK, symbol MK).

1 MWK = 100 tambala.

Notes are in denominations of Mk500, 200, 100, 50, 20, 10 and 5.

Coins are in denominations of Mk1 and 20, 10, 5, 2 and 1 tambala.

On arrival in Lilongwe you will be able to convert money into MKW. The bureau de changes are the easiest place to change money, and US\$ and GB£ are accepted in both cash and travellers cheque format. Travellers cheques attract a commission charge and a lower exchange rate than cash, which is changed with no commission.

If coming south from Tanzania, MKW can be purchased on the border using US\$ cash. ATMs are effectively non-existent for foreign cards in Malawi.

Time & Voltage

Time Zone - Malawi is 2 hours ahead of GMT. Daylight saving time is not observed

Standard voltage is 220-240V. Electrical sockets in Malawi are the "Type G" British BS-1363 type. You will need a voltage converter, and plug adapter in order to use U.S. appliances

Climate

There are three seasons in Malawi. The rainy season extends from November to April, the cool season from May to July and the dry season from August to October. Temperatures and rainfall are greatly influenced by Lake Malawi and altitude, which varies from 37 metres (in the Lower Shire Valley) to 3050 metres (Mount Mulanje). Along the lakeshore, the mean

Wildlife Express Northbound - 22 days

www.onthegotours.com

UK 020 7371 1113 info@onthegotours.com

AUS 1300 855 684 aus-info@onthegotours.com

NZ 0800 44 77 69 CAN 1 866 890 7038

USA 1 866 606 2960 SA 0800 990 311

This information has been compiled with care and good faith. They give an accurate illustration of the proposed arrangements for this holiday. Circumstances beyond our control such as changes in local conditions, inclement weather or other reasons could force us to make changes to this itinerary. Any costs shown are subject to change, though are an accurate reflection of costs at time of writing. Please also note that visa requirements are subject to change and are the responsibility of the traveller and not that of On The Go Tours.

Wildlife Express Northbound

annual temperature is 24°C, and humidity can be high during the rainy season.

Tanzania Country Guide

Plastic Bag Ban

Effective 1st June 2019: All passengers arriving at any Tanzania airport including tourists can possibly face very heavy fines for using plastic bags in any way, shape or form. Using, manufacture or importation of plastic bags, including garbage bags and shopping bags is illegal. Offenders, including tourists, could face very heavy fines.

Visitors/Citizens and Residents alike are advised to avoid packing any plastic bags in their suitcases or in carry-on hand luggage before flying to Tanzania. Items purchased at the airport before boarding the aircraft should be removed from plastic bags. Please check hand luggage before disembarking at entry points and any plastic bags should be left in the plane.

Similarly the transparent "zip-lock" plastic bags that some airlines require passengers to use for keeping liquids, cosmetics, toiletries etc separately in hand luggage are also not permitted to be brought and should be removed and left on the plane before disembarking.

Visas

Please be advised that visa requirements are subject to change and that visa procurement is the responsibility of the traveller and not On The Go Tours, therefore it is essential that you check current visa requirements with the embassy before travel. Please also ensure that your passport is valid for at least 6 months from your planned date of departure from Africa.

UK, Irish, Australian, New Zealand, USA, Canadian and RSA citizens require a visa for Tanzania. A single entry visas can be obtained by most nationalities upon arrival at Dar es Salaam, Kilimanjaro and Zanzibar Airport or at Namanga border crossing point, between Tanzania and Kenya. The current visa cost is US\$50 for all nationalities, which can be paid in US\$, GB£ or Euro cash. The three East African countries of Kenya, Tanzania and Uganda have an agreement that you can travel freely between these countries and do

not have to get another visa when returning to each. If you exit this region and enter any other country, including Rwanda and the Democratic Republic of Congo, you will need to get new visas to re enter Kenya, Tanzania and Uganda.

The border crossings we use in Tanzania include:

Namanga (Kenya/Tanzania border)
Isebania (Kenya/Tanzania border)
Songwe (Tanzania/Malawi)

Vaccinations

You should seek medical advice before travelling to Tanzania from your local health practitioner and ensure that you receive all of the appropriate vaccinations. As a guide Polio, Diphtheria, Hepatitis A & B, Typhoid and Tetanus is strongly recommended. Meningitis and Rabies are also recommended.

There is the risk of malaria in Tanzania so it is very important to check with your doctor before you go, to see whether malarial medication is required for the areas you are visiting.

A Yellow Fever International Certificate of Vaccination is required from travellers over one, arriving from countries infected with yellow fever or who were in transit through infected areas (unless they remained onboard or at the airport); this is particularly relevant if traveling from neighbouring African countries. If visiting Zanzibar from mainland Tanzania, a yellow fever certificate must be produced to gain entry.

Currency

The currency of Tanzania is the Tanzanian Shilling (code TZS, symbol TSh).
1 TSh = 100 cents. Notes are in denominations of TSh10,000, 5000, 2,000, 1,000 and 500. Coins are in denominations of TSh200, 100, 50, 20 and 10.

The Tanzanian Shilling is non exportable or importable. You can exchange US Dollars, Pound Sterling or Euro cash at bureau de changes or banks in larger towns/cities. Cash is changed with no commission. Exchange rates vary depending upon the denomination of the note that you want to change

and generally smaller notes attract a lower exchange rate than high ones. Be aware that old pre-2010 US\$ banknotes or torn or marked banknotes are difficult to exchange in Africa so make sure you take crisp new notes. Alternatively most large towns/cities have an ATM where cash can be withdrawn using Visa or MasterCard. Credit cards are very rarely accepted for making purchases.

Banking hours: Mon-Fri 0830-1230; Sat 0830-1300. Bureaux de change have longer hours and in the cities open on Sundays.

Travellers cheques are more difficult to change and require proof of purchase and often have restrictions of about US\$100 a day maximum. Please note that there is a surcharge when paying by travellers cheques.

Time & Voltage

Tanzania Time Zone - 3 hours ahead of GMT. Daylight saving time is not observed.

Standard voltage is 220-240V. Primary sockets require a Type G British BS-1363 or Type D Indian BS-546 type, three pin plug. You will need a voltage converter, and plug adapter in order to use U.S. appliances. We recommend getting a universal adapter.

Climate

Tanzania is sunny and tropical (accept in the mountain regions). Given the sheer size of the country, the climate varies dramatically in different regions. In coastal regions and on the islands of Zanzibar and Pemba it is hot and humid year-round with higher rainfall, whilst inland, the central plateau is dry and hot and the north-western highlands are cooler. The long rains occur between mid-March and the end of May and there are also short, lighter rains during November and December. The driest months are June to October.

Zambia Country Guide

Visas & Departure Tax

Please be advised that visa requirements are subject to change and that visa procurement is the responsibility of the traveller and not On The Go Tours, therefore it is essential that you check current visa requirements with the

Wildlife Express Northbound - 22 days

www.onthegotours.com
UK 020 7371 1113 info@onthegotours.com
AUS 1300 855 684 aus-info@onthegotours.com
NZ 0800 44 77 69 CAN 1 866 890 7038
USA 1 866 606 2960 SA 0800 990 311

updated on 09-07-2020 11:38:00

This information has been compiled with care and good faith. They give an accurate illustration of the proposed arrangements for this holiday. Circumstances beyond our control such as changes in local conditions, inclement weather or other reasons could force us to make changes to this itinerary. Any costs shown are subject to change, though are an accurate reflection of costs at time of writing. Please also note that visa requirements are subject to change and are the responsibility of the traveller and not that of On The Go Tours.

Wildlife Express Northbound

embassy before travel. Please also ensure that your passport is valid for at least 6 months from your planned date of departure from Africa.

UK, Australian, New Zealand, USA, Canadian citizens require a visa for Zambia. Visas can be obtained by most nationalities upon arrival at the airport/border. A single entry visa currently costs US \$50 and a double/multiple entry costs \$80. Irish and South African passport holders do not require a visa.

KAZA Visa

Zimbabwe and Zambia have re-introduced the popular, and much-awaited KAZA (Kavango-Zambezi) "Uni-Visa", which allows visitors to stay in either (or both) countries for up to 30 days for a single payment of US\$50.

The UniVisa is available at Harare, Victoria Falls, Lusaka and Livingstone International airports, the Victoria Falls land border (Zimbabwe/Zambia) and the Kazungula land border (Zimbabwe/Zambia/Botswana).

The border crossings we use in Zambia include:

Machinji (Malawi/Zambia)
Kazungula (Zambia/Botswana)

Vaccinations

You should seek medical advice before travelling to Zambia from your local health practitioner and ensure that all you receive all of the appropriate vaccinations. As a guide Tetanus, diphtheria, polio, hepatitis A and hepatitis B (for stays over 4 weeks) are strongly recommended.

Zambia has a malaria risk throughout the year in the whole country, therefore we strongly recommend that you take anti-malaria medication.

The yellow fever vaccination is required for passengers travelling to and from Zambia. All in-transit passengers travelling between Zambia and South Africa, irrespective of the time period in transit, will also be required to present their Yellow Fever Vaccination Certificate.

Currency

Zambia's currency is the Zambia Kwacha (ZMW)

Notes are in denominations of ZMW100, 50, 20, 10, 5, and 2.

Banking hours vary but most are open from Mon - Fri 0815-1430

ATMs are available at Standard Chartered and Barclays Bank which accept Visa. Most large stores and hotels accept credit cards.

If travelling on one of our overland safaris there is no real need to convert any of your money to ZMW, as you will only be in Zambia for a short period of time. Campsites readily accept US\$ cash for food and beverages.

Time & Voltage

Time Zone - Zambia is 2 hours ahead of GMT. Daylight saving time is not observed.

Standard voltage is 230V. Zambia has several varieties of electrical sockets. The 3 primary sockets are 'Type C' - European, 'Type D' - Indian and 'Type G' - British. You will need a voltage converter and plug adapter in order to use U.S. appliances.

Climate

Zambia is warm all year round, but has three distinct seasons. Between December and April the weather is hot and wet; from May to August it is cooler and dry; between September and November conditions are hot and dry. Average summer temperatures range between 25°C to 35°C, while in winter they can fall as low as 6°C at night, although daytime temperatures average 24°C.

Zambian Airport Departure Tax

NOTES FOR THOSE FLYING OUT OF LIVINGSTONE AIRPORT IN ZAMBIA

An airport departure tax is in place for all flights departing from Zambian airports. The price will be US\$25 for international flights and US\$8 for domestic flights. This is usually included in airline ticket prices; if not, it is payable at the airport in US dollars. Transit passengers and children under two years are exempt. A recently introduced

additional airport tax (Airport Development Infrastructure Fee), approx USD\$8 per person domestic flights and USD\$25 for international flights, payable in cash on departure.

Zimbabwe Country Guide

Visas

Please be advised that visa requirements are subject to change and that visa procurement is the responsibility of the traveller and not On The Go Tours, therefore it is essential that you check current visa requirements with the embassy before travel. Please also ensure that your passport is valid for at least 6 months from your planned date of departure from Africa.

UK, Ireland, Australian, New Zealand, USA and Canadian passport holders require a visa to enter Zimbabwe, these visas are available at the border for the following costs: Australian, New Zealand and US citizens: US \$30 single/\$45 double entry visa. British and Irish is US\$55 single/\$70 double. Canadians can only obtain a single entry visa at the border for US \$75. South African passport holders can obtain a visa for free. Visas can be brought using post 2003 US\$ notes, GB£ or South African Rand.

KAZA Visa

Zimbabwe and Zambia have re-introduced the popular, and much-awaited KAZA (Kavango-Zambezi) "Uni-Visa", which allows visitors to stay in either (or both) countries for up to 30 days for a single payment of US\$50.

The UniVisa is available at Harare, Victoria Falls, Lusaka and Livingstone International airports, the Victoria Falls land border (Zimbabwe/Zambia) and the Kazungula land border (Zimbabwe/Zambia/Botswana).

The border crossings we use in Zimbabwe include:

Kazungula (Botswana/Zimbabwe)

Vaccinations

Seek advice from your doctor or travel clinic at least six weeks prior to departure about what vaccinations you require. Typically the

Wildlife Express Northbound - 22 days

www.onthegotours.com
UK 020 7371 1113 info@onthegotours.com
AUS 1300 855 684 aus-info@onthegotours.com
NZ 0800 44 77 69 CAN 1 866 890 7038
USA 1 866 606 2960 SA 0800 990 311

This information has been compiled with care and good faith. They give an accurate illustration of the proposed arrangements for this holiday. Circumstances beyond our control such as changes in local conditions, inclement weather or other reasons could force us to make changes to this itinerary. Any costs shown are subject to change, though are an accurate reflection of costs at time of writing. Please also note that visa requirements are subject to change and are the responsibility of the traveller and not that of On The Go Tours.

Wildlife Express Northbound

list includes typhoid, tetanus, diphtheria, polio, hepatitis A and B (for stays over 4 weeks).

In Zimbabwe a malarial risk exists from November to June in all areas below 1200m and throughout the year in the Zambezi Valley. We strongly recommend that you take your anti-malaria medication. Other precautionary measures to prevent contact with mosquitoes include: insect repellent, cover up at sundown, sleep under a mosquito net and wear long sleeve clothing and long trousers in the evenings.

Yellow fever: A yellow fever vaccination certificate is required from travellers over one year of age coming from infected areas.

Currency

The Zimbabwean Dollar was abandoned in April 2009. The country has adopted a multi-currency scheme; the US Dollar and South African Rand can be used for domestic transactions.

Zimbabwe is essentially a cash-only society now with ATMs pretty useless for the foreigner. Credit cards only used in a handful of places, however all major hotels will now accept this payment. We recommend bringing enough cash to cover your stay in Zimbabwe (in either USD or ZAR) especially in the smaller denominations (US\$1-20 and ZAR10 - 200) as there is always a shortage of change and shopkeepers will often refuse larger bills. Please also be aware it is illegal to leave Zimbabwe with over \$1000 (or equivalent) in cash.

Zimbabwe introduced Bond Notes into circulation on 28 November 2017 which will be used alongside the US dollar and other currencies. These Bond Notes will be at a 1:1 parity with the US dollar. However, they are only legal tender within Zimbabwe and as such can only be used there. These Bond notes will be in \$2 and \$5 denominations and there will also be a new \$1 Bond coin.

Banking hours: Mon, Tues, Thurs, Fri - 0800-1500 , Wed 0800-1300 and Sat - 0800-1130. In major towns/cities most banks have an ATM. American Express, Diners Club and Visa cards are widely accepted.

Major foreign currencies can be exchanged at bureaux de change and banks at the official exchange rate. Please also be aware it is illegal to leave Zimbabwe with over \$1000 (or equivalent). As of June 2016 it is becoming increasingly difficult to withdraw money from ATMs in Zimbabwe. There is a cash limit of \$500 per day - however a lot of banks are not replenishing the ATMs. It is strongly advised that you bring enough money with you before you enter Zimbabwe and don't rely on getting any whilst there.

Travellers cheques are accepted at banks, these should be in US Dollars or Pound Sterling to avoid additional exchange rate charges. Most banks will want to see your passport and proof of purchase receipt before cashing your travellers cheques. Please Note: Travellers cheques can be difficult to cash so do not rely upon them as your sole source of funds.

Time & Voltage

Standard voltage is 220-240V. Primary sockets require a 'Type G' - British plug, or 'Type D' - old English plug or Indian plug. You will need a voltage converter and plug adapter in order to use U.S. appliances.

Zimbabwe is 2 hours ahead of GMT. Daylight saving time is not observed.

Climate

Although located in the tropics, temperate conditions prevail all year round in Zimbabwe as the climate is moderated by altitude and the inland position of the country.

Zimbabwe has a rainy season from November/December to March, during this time days are hot and sunny with possible afternoon thunderstorms. By April and May most of the rain is gone, skies are clear and days are sunny and warm. Night time temperatures drop dramatically between June and August although daytime temperatures remain pleasantly warm. Late August sees the start of the hot and dry season which continues until October.

Zambian Airport Departure Tax

NOTES FOR THOSE FLYING OUT OF LIVINGSTONE AIRPORT IN ZAMBIA

An airport departure tax is in place for all flights departing from Zambian airports. It will no longer be included on the ticket and will now be collected in Zambian Kwacha cash direct from the passenger. The amount payable is currently K28,000 for Domestic Flights and K56,000 for International Flights and is payable on departure from all Zambian airports. Passengers need to have ZMK cash available for this tax. Please note, departure taxes are subject to change.

OPTIONAL ACTIVITIES

We offer a number of locally operated optional activities and excursions on each of our expeditions. We feel that offering optional excursions affords a greater degree of flexibility, independence and choice to our travellers. To help you budget, below is a selection of optional excursions available on this trip.

Please note the following:

All prices are in US Dollars and are subject to change. Where activities occur away from your base, there may be an additional transfer cost. Make sure you have \$US dollars with you before you travel to Africa as it is notoriously difficult to get them here.

Victoria Falls activities (if applicable) - must be paid for in US\$ cash (GBP & ZAR also accepted at a lower rate).

Gorilla Trekking (if applicable) - the price varies dependant on where gorilla trek takes place ie Uganda, DRC or Rwanda.

We offer camping excursions in the Serengeti/ Ngorongoro Crater and Okavango Delta.

All optional excursions are offered by 3rd parties and independently of On The Go Tours. They are undertaken at your own risk and On The Go Tours take no responsibility for personal loss/injury caused.

Kenya

Nairobi National Park half day. (Min 2 people) US \$175 per person

Wildlife Express Northbound - 22 days

www.onthegotours.com
 UK 020 7371 1113 info@onthegotours.com
 AUS 1300 855 684 aus-info@onthegotours.com
 NZ 0800 44 77 69 CAN 1 866 890 7038
 USA 1 866 606 2960 SA 0800 990 311

This information has been compiled with care and good faith. They give an accurate illustration of the proposed arrangements for this holiday. Circumstances beyond our control such as changes in local conditions, inclement weather or other reasons could force us to make changes to this itinerary. Any costs shown are subject to change, though are an accurate reflection of costs at time of writing. Please also note that visa requirements are subject to change and are the responsibility of the traveller and not that of On The Go Tours.

Wildlife Express Northbound

Malawi

Fresh Water Diving at Kande Beach (Price from) US \$60

Full Day Snorkelling in Lake Malawi US \$50

Horse Riding 2 - 3 hours US \$70 - \$240

Village Walk & Meal US \$40

Tanzania

Dhow Fishing Trip - Zanzibar US \$50

Moped Hire US \$100

Olduvai Gorge US \$35

Prison Island Snorkelling Trip US \$70

Scuba Diving - Price from US \$100

Snorkel Trip - Nungwe Half Day US \$60

Stone Town Tour - Zanzibar US \$60

Zambia

Zambezi Sunset Dinner Cruise US \$90

Zimbabwe

Bungee Jump (111m) US \$130

Helicopter Over The Falls 15 mins US \$165

Microflight Over The Falls 15 mins US \$180

Rafting & Boarding Combo Low Water (Excl USD10 NP Fee) US \$190

Rafting On The Zambezi Full Day US \$150

Wildlife Express Northbound - 22 days

updated on 09-07-2020 11:38:00

www.onthegotours.com

UK 020 7371 1113 info@onthegotours.com

AUS 1300 855 684 aus-info@onthegotours.com

NZ 0800 44 77 69 CAN 1 866 890 7038

USA 1 866 606 2960 SA 0800 990 311

This information has been compiled with care and good faith. They give an accurate illustration of the proposed arrangements for this holiday. Circumstances beyond our control such as changes in local conditions, inclement weather or other reasons could force us to make changes to this itinerary. Any costs shown are subject to change, though are an accurate reflection of costs at time of writing. Please also note that visa requirements are subject to change and are the responsibility of the traveller and not that of On The Go Tours.