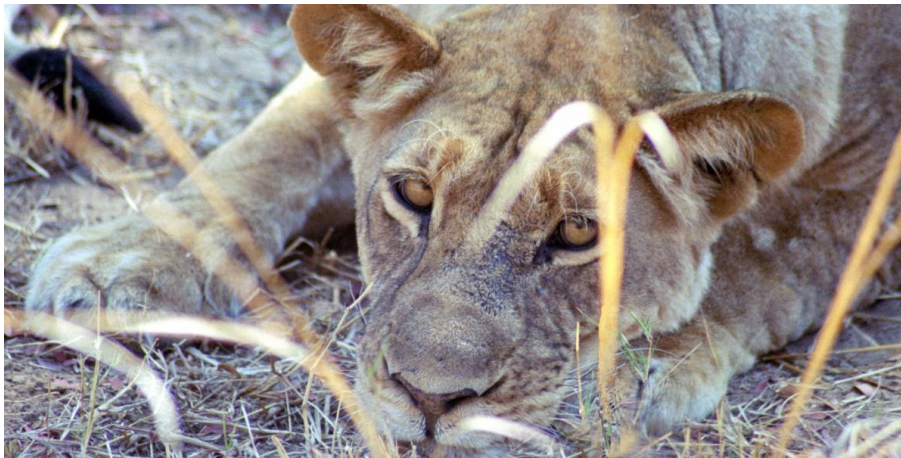


# Wildlife Express Northbound

## 22 days | Victoria Falls to Nairobi



*Take a walk on the wild side. Track the African elephant, lion, giraffe and zebra, chill out in Zanzibar, cool off at Lake Malawi, enjoy the pleasures of Victoria Falls - the adrenaline capital of Africa and have the time of your life!*

### HIGHLIGHTS AND INCLUSIONS

#### Trip Highlights

- **Zimbabwe** - start your adventure in Victoria Falls with a full day to visit the waterfall and join optional bungee jumping or river rafting
- **Botswana** - drive through the wildlife-rich national park and camp out in the reserve, listening to the sounds of the nocturnal wildlife
- **Zambia** - admire the Zambian side of thundering Victoria Falls in Livingstone and explore South Luangwa National Park on safari
- **Malawi** - visit the Malawian capital, Lilongwe and spend three days travelling along the shore of Lake Malawi, stopping often to explore various bays, beaches and local communities
- **Tanzania** - pass through Mikumi National Park, relax on the sandy beaches of Zanzibar and search for the Big Five in

the legendary Serengeti and Ngorongoro Crater

- **Kenya** - finish your African safari adventure in the Kenyan capital, Nairobi, and opt to extend your stay

#### What's Included

- Arrival transfer from Victoria Falls Airport on day 1
- 1st night dorm/camping in Victoria Falls and 17 nights camping, tents and sleeping mats provided
- 18 breakfasts, 14 lunches and 16 dinners
- A fully equipped overland truck for transportation and game drives
- Services of 3 person crew (leader, driver, cook)
- All camping fees and appropriate equipment
- Ngorongoro NP, Serengeti NP, Chobe NP & South Luangwa Park - park entry & game drives
- 3 night Zanzibar Excursion including ferry transfer, accommodation, Spice Tour and Dhow Sunset Cruise
- All road taxes and tolls

#### What's Not Included

- International flights and visas
- Sleeping bag - please bring your own
- Tipping - an entirely personal gesture
- Optional activities

#### Local Payment

\$1450pp, paid in USD

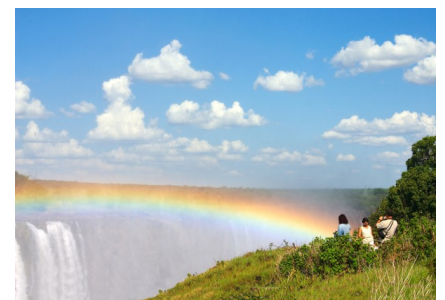
The local payment is a cost per person which needs to be paid in US Dollars cash only. It is this payment which in part covers the park fees and other inclusions such as meals as detailed under 'what you get'. The local payment also covers your arrival transfer and 1st night's accommodation. Please note that due to exchange rate fluctuations in the US dollar, the local payment amount may be subject to changes. This payment will be collected by your tour leader at the Welcome Meeting on day 1.

### ITINERARY

#### Day 1 : Victoria Falls

Saturday. Upon arrival at Victoria Falls airport we will meet you and take you to your campsite in Victoria Falls and your pre departure meeting will be here at 1700hrs this evening. **Overnight - Victoria Falls**

#### Day 2 : Victoria Falls



Today is a free day to explore and take advantage of the myriad of activities

### Wildlife Express Northbound - 22 days

www.onthegotours.com  
 UK 020 7371 1113 info@onthegotours.com  
 AUS 1300 855 684 aus-info@onthegotours.com  
 NZ 0800 44 77 69 CAN 1 866 890 7038  
 USA 1 866 606 2960 SA 0800 990 311

This information has been compiled with care and good faith. They give an accurate illustration of the proposed arrangements for this holiday. Circumstances beyond our control such as changes in local conditions, inclement weather or other reasons could force us to make changes to this itinerary. Any costs shown are subject to change, though are an accurate reflection of costs at time of writing. Please also note that visa requirements are subject to change and are the responsibility of the traveller and not that of On The Go Tours.

# Wildlife Express Northbound

that Victoria Falls has to offer. The Falls themselves are one of the most amazing sites on any trip to Africa - standing at over 1700 metres wide and over 100 metres high these falls are the largest sheet of falling water in the world. **Overnight - Victoria Falls (B)**

## Day 3 : Chobe National Park

Victoria Falls - Chobe NP (Botswana). We depart Victoria Falls for Botswana today and our first stop is Kasane - the gateway to Chobe National Park. This afternoon we pack our bags for our included overnight excursion to the Chobe - Botswana's premier game park. We will spend the afternoon on the look out for wildlife as we game drive to our camp within the park for an evening surrounded by the nocturnal noises of the resident wildlife. **Overnight - Chobe National Park (B, L, D)**

## Day 4 : Livingstone



Chobe NP - Livingstone (Zambia). Leaving the park this morning we return to Kasane to depart for Livingstone in Zambia where we can head back to Victoria Falls - this time on the Zambian side. **Overnight - Livingstone (B, D)**

## Day 5 : Lusaka area

Livingstone - Lusaka area. We are early risers today as we head through southern Zambia to our campsite near the capital Lusaka. **Overnight - Lusaka area (B, L, D)**

## Days 6-7 : South Luangwa NP



Lusaka area - South Luangwa National Park. Today we travel to South Luangwa National Park - one of Zambia's best game spotting areas. Opened in 1938 it covers 9000 square km and is inhabited by elephants, buffalo and giraffe as well as the water dwelling crocodiles and hippos. **Overnight - South Luangwa National Park (B:2, L:2, D:2)**

## Days 8-10 : Lake Malawi Beaches

South Luangwa - Lake Malawi Beaches (Malawi). Leaving Zambia we cross into Malawi, the 'Warm Heart of Africa'. We stop off in the capital, Lilongwe, a small city distinctively divided into the old town and the new administrative centre. Malawi is a landlocked country with 20% of its total area made up of beautiful Lake Malawi. We camp first at the central Lake, and then in the northern area over the next 3 days. **Overnight - Lake Malawi Beaches (3) (B:3, L:3, D:3)**

## Day 11 : Iringa

Lake Malawi Beaches - Iringa (Tanzania). Leaving Malawi behind us we enter Tanzania at the Songwe border post. Our journey today takes us through the beautiful Tukuyu tea and banana plantations before we arrive our campsite for the night - the Farmhouse in Iringa - well known for its famous Amarula Hot Chocolate! **Overnight - Iringa (B, L, D)**

## Day 12 : Dar es Salaam

Iringa - Dar es Salaam. Our journey today takes us through Mikumi National Park as we travel up to Dar Es Salaam. It is not uncommon to see elephants and giraffe crossing the main road in front of the regular traffic. Be prepared for some heavy traffic as we enter Dar Es Salaam - but the people watching can be very entertaining! Our campsite for the evening

is by the sea before we depart for Zanzibar tomorrow. **Overnight - Dar es Salaam (B, L, D)**

## Days 13-15 : Zanzibar



Dar es Salaam - Zanzibar. We take the ferry over to Zanzibar for our 3 night stay on the Spice Island! Zanzibar is steeped in history and was one of the major starting points for most East African explorers in their quest for new lands. New passengers may join us to replace those that will leave us at the end of our excursion to Zanzibar. **Overnight - Zanzibar (B:1)**

## Day 16 : Zanzibar



Zanzibar - Dar es Salaam. Leaving Zanzibar in the afternoon, we return to the mainland and another night in Dar es Salaam. Arrival back to camp is usually in the late afternoon, or early evening. **Overnight - Dar es Salaam (D)**

## Days 17-18 : Arusha

Dar es Salaam - Pangani - Arusha. Over the next two days we continue north stopping off one night in the coastal town of Pangani before continuing to Arusha - our base for our trip into the Serengeti and Ngorongoro Crater. **Overnight - Pangani (1) Arusha (1) (B:2, L:2, D:2)**

## Wildlife Express Northbound - 22 days

www.onthegotours.com  
 UK 020 7371 1113 info@onthegotours.com  
 AUS 1300 855 684 aus-info@onthegotours.com  
 NZ 0800 44 77 69 CAN 1 866 890 7038  
 USA 1 866 606 2960 SA 0800 990 311

This information has been compiled with care and good faith. They give an accurate illustration of the proposed arrangements for this holiday. Circumstances beyond our control such as changes in local conditions, inclement weather or other reasons could force us to make changes to this itinerary. Any costs shown are subject to change, though are an accurate reflection of costs at time of writing. Please also note that visa requirements are subject to change and are the responsibility of the traveller and not that of On The Go Tours.

# Wildlife Express Northbound

## Days 19-21 : Serengeti & Ngorongoro



On day 19 we have a morning visit to the Meserani Reptile Park and Masai Cultural Museum.

Our Serengeti and Ngorongoro excursion takes us via Mtu Wa Mbu (Mosquito River) that lies adjacent to the Lake Manyara National Park and Karatu. Karatu has beautiful views over the surrounding hills. Our campsite this evening is in Karatu. The following morning we enter the Ngorongoro Conservation area and Ngorongoro Crater. This World Heritage Site boasts some of the best game viewing in Africa – including the elusive Black Rhino.

After our game drive in the Crater, we continue past the 'Cradle of Mankind' as we head to the Serengeti. Crossing the vast plains we game drive through the southern and central parts of the park. Tonight we bush camp (no ablutions) in the wild surrounded by the African wilderness. In the morning we take another game drive in search of the 'Big 5'!

Later we head back to our truck at Arusha, where we spend the evening musing over our amazing wildlife experience. **Overnight - Karatu (1) Serengeti (1) Arusha (1)** (B:3, L:3, D:3)

## Day 22 : Nairobi



Arusha - Nairobi (Kenya). Today we cross the border into Kenya and our final destination Nairobi. (B)

### HOTELS

Highlighted below are some of the hotels which we frequently use on this tour, though we reserve the right to substitute these hotels to ones of a similar standard.

**Please refer to your Tour Voucher for your confirmed arrival hotel and further arrival information.**

### Shearwater Explorers Village

Situated in the bohemian town of Victoria Falls, and 400m from the Falls themselves, the affordable accommodation at the Shearwater Explorers Village consists of 5 campsites with modern bathroom facilities, and 16 chalets with en-suite showers and A/C. Shearwater operates a range of activities at the Falls, from bungee jumping to river rafting - and when the day is over, guests can wind down with Wi-Fi in the lounge areas, a drink by the pool, or even a back rub in the massage tent.



### Victoria Falls Rest Camp

Located a stone's throw away from the Artist village & Elephant Walk Shopping is the Victoria Falls Rest Camp. Offering camping and dorm room accommodation, this camp features a year-round outdoor pool and barbecue facilities. Daily continental or

cooked breakfast is served at the in-house restaurant, which also offers a variety of local African dishes. Wi-fi is available and some units feature equipped kitchens.



### Croc Valley Camp

Croc Valley Camp is located on the banks of the Luangwa River, and provides accommodation ranging from riverfront tents to ensuite chalets, built on stilts to avoid the off-season floods. Watch elephants roam across the campsite, experience a game drive through South Luangwa National Park, or relax with a gin & tonic at the bar. The camp also features a large outdoor pool, kitchen facilities, and daily laundry service.



### PRICES / DATES INFO

Departure dates noted with a 'G' are guaranteed to operate. All other departure dates are guaranteed with a minimum of 4 persons. Prices shown are per person travelling. Single travellers will be paired up in tents with another person of the same gender.

### PRICES / DATES 2020

Date	Twin Share	Single
18 Apr	GBP 1,255	GBP 2,455
16 May	GBP 1,255	GBP 2,455
13 Jun	GBP 1,255	GBP 2,455
11 Jul	GBP 1,305	GBP 2,505
25 Jul	GBP 1,305	GBP 2,505
08 Aug	GBP 1,305	GBP 2,505
22 Aug	GBP 1,305	GBP 2,505
05 Sep	GBP 1,305	GBP 2,505

## Wildlife Express Northbound - 22 days

www.onthegotours.com  
 UK 020 7371 1113 info@onthegotours.com  
 AUS 1300 855 684 aus-info@onthegotours.com  
 NZ 0800 44 77 69 CAN 1 866 890 7038  
 USA 1 866 606 2960 SA 0800 990 311

This information has been compiled with care and good faith. They give an accurate illustration of the proposed arrangements for this holiday. Circumstances beyond our control such as changes in local conditions, inclement weather or other reasons could force us to make changes to this itinerary. Any costs shown are subject to change, though are an accurate reflection of costs at time of writing. Please also note that visa requirements are subject to change and are the responsibility of the traveller and not that of On The Go Tours.

# Wildlife Express Northbound

## PRICES / DATES 2020

Date	Twin Share	Single
19 Sep	GBP 1,255	GBP 2,455
03 Oct	GBP 1,255	GBP 2,455
17 Oct	GBP 1,255	GBP 2,455
31 Oct	GBP 1,255	GBP 2,455
14 Nov	GBP 1,255	GBP 2,455
28 Nov	GBP 1,255	GBP 2,455
12 Dec	GBP 1,255	GBP 2,455
26 Dec	GBP 1,305	GBP 2,505

## PRICES / DATES 2021

Date	Twin Share	Single
09 Jan	GBP 1,330	GBP 1,330
23 Jan	GBP 1,330	GBP 1,330
06 Feb	GBP 1,385	GBP 2,715
06 Mar	GBP 1,385	GBP 2,715
03 Apr	GBP 1,385	GBP 2,715
01 May	GBP 1,385	GBP 2,715
29 May	GBP 1,385	GBP 2,715
12 Jun	GBP 1,385	GBP 2,715
26 Jun	GBP 1,385	GBP 2,715
10 Jul	GBP 1,435	GBP 2,765
24 Jul	GBP 1,435	GBP 2,765
07 Aug	GBP 1,435	GBP 2,765
21 Aug	GBP 1,435	GBP 2,765
04 Sep	GBP 1,435	GBP 2,765
18 Sep	GBP 1,385	GBP 2,715
02 Oct	GBP 1,385	GBP 2,715
16 Oct	GBP 1,385	GBP 2,715
30 Oct	GBP 1,385	GBP 2,715
13 Nov	GBP 1,385	GBP 2,715
27 Nov	GBP 1,385	GBP 2,715
11 Dec	GBP 1,385	GBP 2,715
25 Dec	GBP 1,435	GBP 2,765

## Wildlife Express Northbound - 22 days

updated on 04-04-2020 07:47:08

www.onthegotours.com

UK 020 7371 1113 info@onthegotours.com

AUS 1300 855 684 aus-info@onthegotours.com

NZ 0800 44 77 69 CAN 1 866 890 7038

USA 1 866 606 2960 SA 0800 990 311

This information has been compiled with care and good faith. They give an accurate illustration of the proposed arrangements for this holiday. Circumstances beyond our control such as changes in local conditions, inclement weather or other reasons could force us to make changes to this itinerary. Any costs shown are subject to change, though are an accurate reflection of costs at time of writing. Please also note that visa requirements are subject to change and are the responsibility of the traveller and not that of On The Go Tours.