

Natural Wonders of Brazil

12 days | Rio de Janeiro to Rio de Janeiro



Discover the natural wonders of Brazil in 12 captivating days. Take in spectacular views of Rio from the top of Corcovado Mountain, travel along the coast to beautiful bay-side Paraty, spend 4 nights in the Pantanal wetlands and marvel at the Iguazu Falls.

HIGHLIGHTS AND INCLUSIONS

Trip Highlights

- Rio de Janeiro – stay in Copacabana, with its world-famous beach and explore the city on a guided tour
- Corcovado Mountain – glide through the Tijuca National Park on rack-and-pinion railway to see the iconic Christ the Redeemer statue
- Sugarloaf Mountain – marvel at the views from one of Rio's iconic landmarks
- Iguazu Falls - explore one of the world's largest and most spectacular waterfall systems spanning the borders of Argentina and Brazil
- Paraty – wander around this captivating bay-side town and take a cruise along the coastline, stopping at the tropical islands and pristine bays

- Pantanal – spend three full days discovering the exotic wildlife of the Pantanal Wildlife Wetlands

What's Included

- 11 breakfasts, 4 lunches and 4 dinners
- 7 nights 3 star hotels and 4 nights wetland lodge
- All relevant transfers and transportation
- Airport arrival and departure transfer on day 1 and day 12
- 3 economy class flights from Sao Paulo - Foz do Iguacu, Foz do Iguacu - Campo Grande & Campo Grande - Rio de Janeiro.
- Excursion of the Argentine and Brazilian side of Iguazu Falls
- Schooner cruise around the bays and islands of Paraty
- Guided tour of Rio de Janeiro, Sugarloaf Mountain & Corcovado Mountain
- Pantanal Wetlands - 3 day full programme of excursions on foot, horseback and by boat or road
- Escorted by an experienced tour leader with the services of local guides

What's Not Included

- International flights to/from our tour start/end points and visas
- Items of a personal nature and additional meals
- Tipping – an entirely personal gesture

DETAILED ITINERARY

Days 1-2 : Rio De Janeiro



Saturday. Those of you arriving on an international flight will be met at the airport by the tour leader or a local representative and escorted to the group hotel in Copacabana. The drive from here into the city gives a fleeting glimpse of the docks and commercial centre as you head towards the magnificent stretch of sand at Copacabana beach.

We spend two days in Rio, with time to explore this extraordinary city of extremes. Sumptuous apartments overlook the sparkling bays against a backdrop of half-built shanty towns, favelas, which cling precariously to the hillsides. Rio squats among towering jungle-clad granite mountains, fringed with white sand beaches which swoop down into the Atlantic surf.

There is an included tour of this iconic city, including the cable car up to Sugar Loaf

Natural Wonders of Brazil - 12 days

www.onthegotours.com
 UK 020 7371 1113 info@onthegotours.com
 AUS 1300 855 684 aus-info@onthegotours.com
 NZ 0800 44 77 69 CAN 1 866 890 7038
 USA 1 866 606 2960 SA 0800 990 311

This information has been compiled with care and good faith. They give an accurate illustration of the proposed arrangements for this holiday. Circumstances beyond our control such as changes in local conditions, inclement weather or other reasons could force us to make changes to this itinerary. Any costs shown are subject to change, though are an accurate reflection of costs at time of writing. Please also note that visa requirements are subject to change and are the responsibility of the traveller and not that of On The Go Tours.

Natural Wonders of Brazil

mountain, a twin-peaked vertical mountain protruding over the ocean, where you can enjoy the views back over the city and into the lush mountains beyond. You'll also board a steep rack-and-pinion railway which glides up through tropical Tijuca National Park, the largest urban forest in the world dripping with fruit and flowers, to reach the summit of Corcovado Mountain. Here the famous 40m art deco Christ the Redeemer statue soars above the city, arms outspread benevolently. On a clear day the views over the city and out across the ocean and outlying islands are stupendous. **Overnight - Rio De Janeiro (B:1)**

Day 3 : Paraty

Rio de Janeiro - Paraty. We travel by private bus (4.5 hours) down the scenic 'green coast' to the bay-side colonial town of Paraty today; the road is fringed by steep mountains covered in Atlantic forest on one side, and the deep blue ocean on the other. Paraty, meaning 'river of fish' in the indigenous Tupi language, is located on a beautiful stretch of the bay of Ilha Grande. This UNESCO World Heritage Site is faced by tropical islands in the bay. Wander the town's cobbled streets, explore baroque churches and check out the local art work in the many contemporary galleries. There are also some excellent places to eat fresh fish close to the front. **Overnight - Paraty (B)**

Day 4 : Paraty cruise



Today we board one of the many schooners that operate in the area and cruise south along the coastline, stopping to explore hidden bays, leafy islands and picture-perfect swimming beaches. **Overnight - Paraty (B)**

Days 5-6 : Iguazu Falls (Brazil)

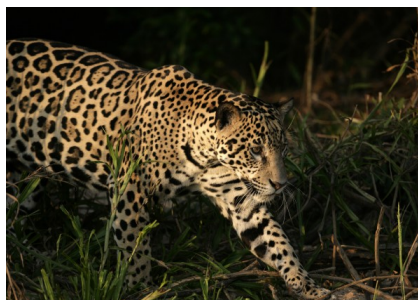


Paraty - Foz do Iguacu. A scenic drive (5-6 hours) by private vehicle from Paraty takes you across the state border to Sao Paulo for the flight to the Iguazu Falls. Situated where the borders of Argentina, Brazil and Paraguay converge, the town of Foz do Iguacu is our base for the next two days, where we can explore the spectacular Iguazu Falls.

A total of 275 falls thunder through dense forest over a 2.5km stretch. The u-shaped Devil's Throat is a thunderous gorge where the frothy water of the Iguazu River crashes over a 1km wide precipice and columns of vapour are thrown skyward. Elsewhere the river flows decorously through the rainforest breaking up into dozens of smaller falls. You can often spot colourful toucans perched in the foliage above the tumultuous waters.

From the Brazilian side there is a broad panorama of these magnificent falls, while a series of walkways on the Argentine side take you through the abundant forest, beneath and even behind some of the dramatic cataracts. Walking within touching distance of these thunderous cascades, your clothes and hair soaked with the spray, is one of the most invigorating experiences to be had. **Overnight - Foz do Iguacu (B:2)**

Days 7-10 : Pantanal



Foz do Iguacu - Pantanal. To the north of Iguacu lies a vast area of wetlands known as the Pantanal, a flight to Campo Grande (normally with a change of planes in Sao Paulo) followed by a few hours by road take us into this vast wilderness. This huge territory of rivers, marsh, savannah and cattle ranches is considered to have the world's most dense flora and fauna ecosystem, and in the wet season 80% of the land is submerged by the overflowing rivers which nurture a rich variety of aquatic plants. We are based in a lodge which is also, a working ranch.

Take a 4WD by road and track tour through the open grasslands, stunted cerrado vegetation, swampland and permanently flooded bays. Ride a horse across the savannah, motorboat down the local rivers or paddle a canoe on one of the numerous waterways. Set out to explore the countryside at night, when the Pantanal comes alive with the sounds of frogs and insects.

Over three full days knowledgeable local guides take us to areas inhabited by giant storks, caiman, giant anteaters, armadillos, howler monkeys and capybara. There is also an extraordinary variety of birdlife: in addition to the aquatic birds egrets, macaws, parakeets and toucans all provide clusters of colour in the low trees. Whatever the season, the wildlife is abundant. **Overnight - Pantanal (B:4, L:4, D:4)**

Day 11 : Rio De Janeiro



Pantanal - Rio de Janeiro. Today we fly back to Rio for a final night in one of the world's most exciting cities. **Overnight - Rio De Janeiro (B)**

Day 12 : Rio De Janeiro

Wednesday. Our adventure comes to an end after hotel check out today. Included departure transfer to the airport or we can

Natural Wonders of Brazil - 12 days

www.onthegotours.com
 UK 020 7371 1113 info@onthegotours.com
 AUS 1300 855 684 aus-info@onthegotours.com
 NZ 0800 44 77 69 CAN 1 866 890 7038
 USA 1 866 606 2960 SA 0800 990 311

This information has been compiled with care and good faith. They give an accurate illustration of the proposed arrangements for this holiday. Circumstances beyond our control such as changes in local conditions, inclement weather or other reasons could force us to make changes to this itinerary. Any costs shown are subject to change, though are an accurate reflection of costs at time of writing. Please also note that visa requirements are subject to change and are the responsibility of the traveller and not that of On The Go Tours.

Natural Wonders of Brazil

help extend your stay if you're not quite ready to go home. (B)

HOTELS

Highlighted below are some of the hotels which we frequently use on this tour, though we reserve the right to substitute these hotels to ones of a similar standard.

Please refer to your Tour Voucher for your confirmed arrival hotel and further arrival information.

Augustos Copacabana Hotel

Set in the heart of Brazil's most famous district, the Augustos Copacabana Hotel is just moments from the beach. Each air-conditioned guestroom includes a private bathroom, TV, minibar and safe. An outdoor pool offers guests both a refreshing swim and stunning views of the city. You can dine in the onsite restaurant which offers both a la carte and buffet style service or explore the many bars and restaurants close by.



Pousada do Príncipe

This bright colonial-style hotel is set minutes' walk from historical centre of Paraty and is perfect for nature lovers. Each air-conditioned guestroom overlooks the swimming pool or lush gardens and includes a private bathroom, WiFi, TV, minibar and mosquito netting. Alongside its ideal location, the hotel also boasts historical significance as it was once the home of Prince D.Joao Henrique de Orleans e Braganca. And if you need any assistance during your visit, you can rely on the hotel's friendly staff to help you out.



Taroba Hotel

Situated in the town of Foz do Iguazu, the Hotel Taroba offers modern comforts in a central location. Each air-conditioned guest room provides a minibar, TV and other modern facilities. Alongside its ideal location, the hotel also boasts a café and swimming pool with panoramic views of the town, fitness centre and massage chairs. Spend an afternoon lounging in the sun, then head out to explore in the evening – you'll find plenty of bars and restaurants close by.



Pousada Aguape

Situated deep within the Pantanal wetlands, this working country farm, that has been in the same family for 150 years, is the perfect accommodation for nature lovers. Once inside, rooms are simple yet comfortable, featuring air conditioning and hot water showers. Guests can relax by the pool or play a spot of beach volleyball. Be sure to check out the onsite restaurant, which serves a full board meal plan. There's no shortage of activities at this property, with wildlife spotting opportunities, even on the hotel grounds toucans and parrots roam freely.



Our Partners

This tour is operated in conjunction with our trusted partner and you will join travellers from different operators, not solely On The Go. The group size may vary in size from 4 - 20 persons.

Tour Leader

On this tour, you'll be accompanied from start to finish by an experienced tour leader. From the moment you land in Latin America until

the day the tour ends they will deal with all the practicalities, expertly adapting to the circumstances and individual needs of the group. Rather than different guides in different cities, your leader will get to know the group and keep you informed and entertained as you go.

Transport

This tour includes 4 flights (longest 3.5 hours), 7 road journeys (longest 8 hours) and 1 boat journey (2 hours).

Accommodation

On this tour the standard of accommodation varies. We utilise comfortable and attractive hotels/guesthouses but in remote locations where options are limited, accommodation is purely functional. All properties are well maintained and all will have a private bathroom with hot water.

Examples of hotels used on this journey include:

- Rio de Janeiro: Hotel Augustos
- Paraty: Pousada Do Principe
- Foz do Iguazu: Hotel Taroba
- Pantanal: Pousada Aguape

On very rare occasions these hotels can change, however please speak to one of our consultants who can provide full details for each departure if you have any doubts.

Optional Excursions

There are a few optional excursions available during this tour, which are booked locally through your tour leader once you are in Latin America. Not all excursions available will suit everybody, whilst others only operate within certain seasons, with minimum numbers or may not be included due to time constraints. A budget of around \$60 USD should cover participation in most of the following options, but prices can fluctuate depending on the size of the party and so cannot be provided accurately until travel commences.

- Iguazu: bird park
- Iguazu: helicopter or boat trip
- Iguazu: make a visit to the nearby Itaipu Dam

Natural Wonders of Brazil - 12 days

www.onthegotours.com
 UK 020 7371 1113 info@onthegotours.com
 AUS 1300 855 684 aus-info@onthegotours.com
 NZ 0800 44 77 69 CAN 1 866 890 7038
 USA 1 866 606 2960 SA 0800 990 311

This information has been compiled with care and good faith. They give an accurate illustration of the proposed arrangements for this holiday. Circumstances beyond our control such as changes in local conditions, inclement weather or other reasons could force us to make changes to this itinerary. Any costs shown are subject to change, though are an accurate reflection of costs at time of writing. Please also note that visa requirements are subject to change and are the responsibility of the traveller and not that of On The Go Tours.

Natural Wonders of Brazil

Travelling Alone

There is no extra cost for single travellers who are willing to share a room. You will be accommodated with a same-sex member of the group who is usually also travelling solo. For single travellers who wish to be sure of having their own room there are a limited number of single supplement places available, which carry a surcharge.

Budget

A budget of around \$45 USD per day should cover the cost of meals, drinks and the odd souvenir.

Tipping

Tips are normally welcomed and expected. Local guides often rely on their tip as a significant proportion of their income. We recommend approximately \$3 USD (or local equivalent) per person per day for each of guides and drivers, depending on the size of the group.

Most service industry workers will expect a tip of some kind and so it is useful to have spare change for hotel porters, taxi drivers and the like. It is common to leave 10 - 12% in restaurants.

If you would like to show your appreciation to your tour leader, who you may feel has exceeded your expectations, a discretionary gratuity would be gratefully received. As a guideline we recommend an amount of between \$4 and \$6 USD per person, per day. You are obviously free to tip more or less as you see fit, depending on your perception of service quality.

Insurance

Travel insurance is essential.

Journey Grade

There are some long days spent travelling (including a number of internal flights) and in the southern summer the heat can be tiring. No previous horse riding experience is required for the horse back trip in the Pantanal.

Clothing And Special Equipment

For day-to-day wear you should take loose-fitting, breathable clothes. Comfortable shoes are important and sandals are useful. A sun hat, sun block and sunglasses are necessary, and you should take a light fleece for cool nights and a Gore-Tex layer, as well as swimwear, a towel, insect repellent and a torch.

Binoculars are useful for wildlife spotting in the Pantanal. At the Iguazú Falls you can also get very wet from the spray; you are advised to take dry clothes in a bag and simply wear swimwear and flip flops.

If you plan to go to good restaurants or out on evening entertainment trips, you might want to bring something a bit smarter as well (although formal attire will not be required).

Please get in touch with the office before departure if you have any doubts.

Vaccinations

Preventative vaccinations are recommended against the following; typhoid; polio; tetanus; hepatitis A. For specific requirements you must consult a Health care professional

As of 2018, visitors to Brazil travelling on our holidays should be protected with a vaccination against yellow fever, and carry the corresponding certificate. In April 2013, the World Health Organisation Strategic Advisory Group of Experts on Immunisation concluded that a single primary dose of yellow fever vaccine is sufficient to confer sustained immunity and lifelong protection against yellow fever disease, and that a booster dose is not needed.

Cases of Zika virus have been reported in parts of Latin America. If you're pregnant, or planning to be, you should follow the advice of the National Travel Health Network and Centre.

KNOW BEFORE YOU GO

Brazil Country Guide

Brazil - Fact File

- Official Name: Federal Republic of Brazil
- Capital: Brasilia
- Population: 176 million
- Total Area: 8.5 million square kilometres
- Official Language: Portuguese
- Religions: Roman Catholic 80%, Protestant 15%
- Voltage: Brazil has a variety of electrical voltages, sometimes within the same city and outlets often accept a range of plug types. For this reason, many hotels and campsites will label their outlets to make sure guests know what type of power they use. If an outlet lacks a label, this information will often be listed in the hotel services guide. If in doubt, you should check with reception before plugging in an appliance.
- Dialling Code: +55
- Time Difference: GMT/UTC -2 to -4. For other time differences please visit www.timeanddate.com
- Airport Departure Tax: none

Brazil - Visas

Citizens of most Western European nations, including the UK and Ireland, need only a passport valid for six months and either a return or onward ticket, or evidence of funds to pay for one, to enter Brazil. An entry card must be filled in on arrival to obtain a tourist permit allowing you to stay for 90 days. Australian, USA and Canadian citizens MUST obtain visas in advance and a return or onward ticket is usually a requirement. Do not lose the carbon copy of the entry card the police staple into your passport on arrival, as you may be fined on departure if you don't present it. A sensible precaution is to photocopy it and keep it separate from your passport (or take a photograph of it). Visa requirements do change periodically so you should check for the latest information on your specific visa requirements with your local Brazilian embassy or consulate well in advance of your planned date of travel.

Brazil - Climate

Brazil can be split into four distinct climatic regions. The coldest part - in fact the only part of Brazil which ever gets really cold - is the South and Southeast, the region roughly from central Minas Gerais to Rio Grande do Sul.

Natural Wonders of Brazil - 12 days

www.onthegotours.com
 UK 020 7371 1113 info@onthegotours.com
 AUS 1300 855 684 aus-info@onthegotours.com
 NZ 0800 44 77 69 CAN 1 866 890 7038
 USA 1 866 606 2960 SA 0800 990 311

This information has been compiled with care and good faith. They give an accurate illustration of the proposed arrangements for this holiday. Circumstances beyond our control such as changes in local conditions, inclement weather or other reasons could force us to make changes to this itinerary. Any costs shown are subject to change, though are an accurate reflection of costs at time of writing. Please also note that visa requirements are subject to change and are the responsibility of the traveller and not that of On The Go Tours.

Natural Wonders of Brazil

Here, there's a distinct winter between June and September, with occasional cold, wind and rain.

The coastal climate is exceptionally good and the 7,000 kilometres of coastline, from Paraná to near the equator, bask under a warm tropical climate. There is a winter, when there are cloudy days and sometimes the temperature dips below 25°C, and a rainy season, when it can really pour. In Rio and points south the summer rains last from October through to January, but they come much earlier in the northeast, lasting about three months from April in Fortaleza and Salvador, and from May in Recife. Even in winter or the rainy season, the weather will be excellent much of the time.

The average monthly temperature in the northeast doesn't ever dip below 25°C and the interior is semi-arid. Rain is sparse and irregular, although violent. Amazônia is stereotyped as being steamy jungle with constant rainfall, but much of the region has a distinct dry season from July to October. Check the weather chart on our website or visit www.worldclimate.com to get an idea of what the weather will be like on your trip.

Visit www.worldclimate.com to get an idea of what the weather will be like on your tour.

Brazil - Money

Important

In Latin America you will have problems changing the US\$100 CB B2 2001 series notes and it is important you do not to bring them. In some countries banks won't even take them. The serial number is located in the top left hand corner and bottom right hand corner on the side with the President's face. This serial number starts with CB and then a few more numbers and then directly under that B2. At the bottom of the note near the signature of the Treasurer it says which series of notes it is and it is there that it says 2001 series.

Local currency

The monetary unit in Brazil is the Real, which is divided into 100 centavos. For up-to-date exchange rates with your own currency visit www.xe.com.

Changing money, credit cards & ATMs

We recommend that you bring cash/travellers cheques in US dollars only. Visa, Diners and American Express are the best credit cards to bring (Mastercard is not common in Brazil), however there can be problems at times getting money out from ATMs, so make sure you have sufficient cash for emergencies.

There is no restriction on the amount of foreign currency that you may bring into Brazil, however very large sums should be declared on arrival. There is often a general lack of small change and we recommend maintaining a supply of small denomination notes and coins.

When arriving at the Rio de Janeiro International Airport we suggest that you get some reals at one of the little banks in the terminal building or use one of the ATMs (as you come out of customs, take the escalators (to the right) to the top floor then go left and right to the end passing through the shops you will find about three ATMs together). Change enough money to see you through the first few days of your trip – particularly if it is a weekend.

Brazil - Local Transport

Much of Rio can be visited by bus or metro (although the latter doesn't really cover many of the tourist sights). The buses are fast (remember, every Brazilian wants to be a motor racing driver, well at least the bus drivers), reliable and cheap. They are easy to use as you get on and pay the conductor who sits in a little booth then pass through a turnstile. Beware of thieves and pickpockets, especially before you pass through the turnstile.

Taxis are relatively cheap and we recommend using them at night. Most taxis have meters and you should insist that the driver switches it on.

In other Brazilian towns and cities walking is basically the best and cheapest way to see the sights (with the exception of Sao Paulo where the metro is the best way of getting around the city).

Brazil - Food & Drink

All meals are included when camping and lunch is included on travelling days in the truck. When staying in hotels lunch and dinner is at your own expense. (All hotels in Brazil include a buffet style breakfast, normally bread, cold meats, hams, cheese, fruits, juice, tea or coffee). As a guideline a simple snack (e.g. a sandwich) can cost as little as US \$0.70, a light meal will cost around US\$2-3, and a main meal with a couple of beers will cost around US\$8. You will find that meals are generally much cheaper than you are accustomed at home but obviously this does depend on what you order and if you have wine or other drinks which will certainly increase the bill. Eating out in upmarket suburbs like Ipanema or Leblon in Rio will be more expensive.

Your tour leader will be able to recommend restaurants.

Generally you will find that meals are much bigger than you are used to and, in many cases, one main meal will serve for two. Quite often the waiter will even suggest that two of you share it.

Food

In Brazil the basic diet focuses on meat and black beans. The favourite national dish, especially on Saturday lunchtimes is "feijoada". This consists of several meats (sausages, pork etc) in a delicious stew cooked with black beans and "farofa" (manioc flour). This is normally accompanied by neat chachaca which will blow your head off at first but then become very mellow.

A 'churrasco' at a typical Churrascarria (BBQ) restaurant is another typical dish but go there with an empty stomach as you will get so much food. Every type of meat you can think of is served on giant swords and waiters wander around topping up your plate every few minutes. These restaurants also have great salad bars with lots of variety where you can help yourself as many times as you wish.

If you like fish ask for 'peixe' which can be grilled, pan fried with breadcrumbs or with a sauce. There are also plenty of chicken ('frango') dishes which are a good idea if

Natural Wonders of Brazil - 12 days

www.onthegotours.com

UK 020 7371 1113 info@onthegotours.com

AUS 1300 855 684 aus-info@onthegotours.com

NZ 0800 44 77 69 CAN 1 866 890 7038

USA 1 866 606 2960 SA 0800 990 311

This information has been compiled with care and good faith. They give an accurate illustration of the proposed arrangements for this holiday. Circumstances beyond our control such as changes in local conditions, inclement weather or other reasons could force us to make changes to this itinerary. Any costs shown are subject to change, though are an accurate reflection of costs at time of writing. Please also note that visa requirements are subject to change and are the responsibility of the traveller and not that of On The Go Tours.

Natural Wonders of Brazil

you don't like your food too salty (the beef normally comes very salty indeed).

Typical snacks available in lanchonetes and roadside truck-stops include 'empadao' (pasties with chicken or meat), 'empadas' (fried version of the latter), 'coxinha' (pear-shaped deep fried manioc flour with fish or chicken), 'pão de queijo' (hot roll made with cheese) and 'salgados' (savoury pastries).

For a cheap and hearty meal try the fixed priced 'prato feito' or 'sortido'. While at the 'comida por kilo' you pay by the kilo which is usually very good value.

Vegetarians

If you are a strict vegetarian you may experience a distinct lack of variety in the food available, especially in small towns. However vegetarian alternatives are becoming more popular you will just have to search a little harder for the restaurants that cater to your tastes. Our tour leaders will do their best to provide interesting vegetarian alternatives when arranging group meals in the campsite, but your patience and understanding is requested.

Drink

All drinks such as water, soft or alcoholic drinks are at your own expense at all times. The following is a guideline for drinks bought in a shop in the street. Prices in restaurants and hotels can sometimes be more than double the prices specified below:

- 1 litre of water - US\$0.50
- 30cl bottle of soft drink - US\$0.30
- 30cl bottle of beer - US\$0.50
- 50cl bottle of beer - US\$0.80

You should be wary of drinking the local tap water. Bottled water and carbonated soft drinks are widely available and are generally safe to drink. Surprisingly, although Brazil is one of the largest coffee producer in the world, most coffee in cafes and restaurants leaves a lot to be desired, so look out for a specialist coffee type cafe. For great fresh fruit juices ('sucos'), try the 'lanchonetes' where you can also get great snacks.

In Brazil some of the hotels we use have bars or serve alcoholic drinks. If there is not a bar in the hotel then there is sure to be one within walking distance. In more up-market hotels, imported beers and spirits are available, but at a much higher price. There is an array of locally made rums, whiskeys, gins, vermouth, campari and cachaca available cheaply. The latter is a sugar-cane liquor which is used in the Brazilian national drink 'Caipirinha' (a mix of cachaca, sugar, crushed ice and slices of squashed limes). Another variation is the 'Batida' which is cachaca mixed with a variety of fruit juices, crushed ice and sugar. There are various brands of beers including Brahma, Antarctica and Cerpa. Draught beer is called 'chopp'.

Natural Wonders of Brazil - 12 days

www.onthegotours.com
 UK 020 7371 1113 info@onthegotours.com
 AUS 1300 855 684 aus-info@onthegotours.com
 NZ 0800 44 77 69 CAN 1 866 890 7038
 USA 1 866 606 2960 SA 0800 990 311

updated on 10-07-2020 07:46:03

This information has been compiled with care and good faith. They give an accurate illustration of the proposed arrangements for this holiday. Circumstances beyond our control such as changes in local conditions, inclement weather or other reasons could force us to make changes to this itinerary. Any costs shown are subject to change, though are an accurate reflection of costs at time of writing. Please also note that visa requirements are subject to change and are the responsibility of the traveller and not that of On The Go Tours.